

Working Instructions

- mechanical -



Xperia XA2 Ultra
H32 12, H3223, H42 13, H4223

CONTENTS

1	Exterior Views.....	7
1.1	H3213/H3223/H4213/H4233	7
2	Tools	8
3	Mandatory Replacement Parts List	13
4	Disassembly.....	14
4.1	Cap Tray.....	16
4.2	Battery Cover Assy	16
4.2.1	Adhesive NFC A and Adhesive NFC B.....	20
4.2.2	Adhesive Battery Cover Top, Adhesive Battery Cover Bottom, Adhesive Battery Cover Left and Adhesive Battery Cover Right.....	20
4.2.3	NFC Antenna Assy	21
4.3	FP Module Assy & Adhesive FP Module	21
4.4	Conductive Tape Sub Antenna	22
4.5	Antenna Box Assy BT/Wi-Fi	22
4.5.1	Antenna Box Assy BT/Wi-Fi	22
4.5.2	Main Camera Shielding	23
4.5.3	Spring Antenna.....	24
4.6	Main Camera.....	24
4.6.1	Main Camera	24
4.6.1	Main Camera Rubber.....	25
4.7	Main PBA	25
4.7.1	Conductive Tape Front Camera	27
4.7.2	Front Camera	27
4.7.3	Audio Jack FPC	28
4.7.4	Sponge Wide-angle Front Camera Back Side & Conductive Tape Wide-angle Front Camera.....	29
4.7.5	Mylar Wide-angle Front Camera.....	29
4.7.6	Wide-angle Front Camera	29
4.7.7	P-Sensor Rubber	30
4.7.8	2 nd Mic Rubber	30
4.7.9	Gasket BtB Audio Jack, Gasket BtB Display FPC, Gasket BtB FP Module, Gasket BtB Wide-angle Front Camera & Gasket BtB Side Key FPC	30
4.8	Ear Speaker & Adhesive Ear Speaker.....	31
4.9	Front Flash LED PCB & Adhesive Front LED PCB	31
4.10	CU Label Tray	32
4.10.1	CU Label Tray	32
4.10.2	CU Label	32
4.11	Main Antenna & Speaker Box Assy	33
4.11.1	Speaker box Mesh	34
4.11.2	Spring Antenna.....	34
4.12	Sub PBA.....	34
4.12.1	Gasket BtB Sub PBA.....	36

4.12.2	Water Intrusion Label	36
4.13	Vibrator & Adhesive Vibrator	36
4.14	Battery and Adhesive Battery Left & Right	37
4.14.1	Adhesive Battery Left & Right	37
4.14.2	Battery	37
4.14.3	Sponge Battery BtB	38
4.14.4	Mylar Battery FPC	38
4.15	RF Cable Black	38
4.16	RF Cable White	38
4.17	Side Panel Cap	39
4.18	Sponge Front Assy Cap Side	39
4.19	Side Panel Keys Assy	39
4.20	Sponge Front Assy Key Side	40
4.21	Side Key FPC Assy	40
4.21.1	Adhesive Side Key FPC Volume Key and Adhesive Side Key FPC Camera Key	40
4.21.2	Side Key FPC	41
4.21.3	Adhesive Side Key FPC Main, Adhesive Side Key FPC B and Adhesive Side Key FPC C	41
4.22	Front Cover Assy	41
4.22.1	Water Intrusion Label	41
4.22.2	Speaker Mesh	42
4.22.3	2 nd Mic Mesh	42
5	Reassembly	43
5.1	Front Cover Assy	45
5.1.1	2 nd Mic Mesh	45
5.1.2	Speaker Mesh	45
5.1.3	Water Intrusion Label	45
5.2	Side Key FPC Assy	45
5.2.1	Adhesive Side Key FPC Volume Key and Adhesive Side Key FPC Camera Key	45
5.2.2	Adhesive Side Key FPC Main, Adhesive Side Key FPC B and Adhesive Side Key FPC C	46
5.2.3	Side Key FPC Assy	47
5.3	Sponge Front Assy Key Side & Sponge Front Assy Cap Side	47
5.4	Side Panel Keys Assy	49
5.5	Side Panel Cap	49
5.6	Adhesive Battery Left	50
5.7	Adhesive Ear Speaker and Ear Speaker	50
5.8	Adhesive Front LED PCB & Front Flash LED PCB	51
5.9	CU Label Tray	52
5.9.1	CU Label	52
5.9.2	CU Label Tray	52
5.10	Main PBA	52

5.10.1	Gasket BtB Audio Jack, Gasket BtB Display FPC, Gasket BtB FP Module, Gasket BtB Wide-angle Front Camera & Gasket BtB Side Key FPC	52
5.10.2	2 nd Mic Rubber	52
5.10.3	P-Sensor Rubber	53
5.10.4	Wide-angle Front Camera	53
5.10.5	Mylar Wide-angle Front Camera	53
5.10.6	Conductive Tape Wide-angle Front Camera	53
5.10.7	Sponge Wide-angle Front Camera Back Side	54
5.10.8	Adhesive Audio Jack	54
5.10.9	Audio Jack FPC	54
5.10.10	Front Camera	55
5.10.11	Conductive Tape Front Camera	55
5.10.12	Main PBA	55
5.11	Main Camera	57
5.11.1	Rubber Main Camera	57
5.11.2	Main Camera	58
5.12	Vibrator	58
5.12.1	Adhesive Vibrator	58
5.12.2	Vibrator	58
5.13	Sub PBA	59
5.13.1	Water Intrusion Label	59
5.13.2	Gasket BTB Sub PBA	59
5.13.3	Sub PBA	59
5.14	RF Cable White	60
5.15	RF Cable Black	61
5.16	Main Antenna & Speaker Box Assy	61
5.16.1	Spring Antenna	61
5.16.2	Speaker box Mesh	62
5.16.3	Main Antenna & Speaker Box Assy	62
5.17	Adhesive Battery Right	63
5.18	Battery	63
5.18.1	Mylar Battery FPC	63
5.18.2	Sponge Battery BtB	63
5.18.3	Battery	64
5.19	Antenna Box Assy BT/Wi-Fi	65
5.19.1	Spring Antenna	65
5.19.2	Main Camera Shielding	66
5.19.3	Antenna Box Assy BT/Wi-Fi	66
5.20	Conductive Tape Sub Antenna	67
5.21	FP Module Assy and Battery Cover Assy	67
5.21.1	NFC Antenna Assy	67
5.21.2	Adhesive Battery Cover Top, Adhesive Battery Cover Bottom, Adhesive Battery Cover Left and Adhesive Battery Cover Right	67
5.21.3	Adhesive NFC_A and Adhesive NFC_B	68
5.21.4	FP Module Assy	68
5.21.5	Battery Cover Assy	69

5.22	Cap Tray.....	72
6	Battery Reuse Instruction.....	74
6.1	Battery Handling Notices.....	74
6.2	Dot Mark Check.....	74
6.3	Dot Marking 1	74
6.4	Appearance Check.....	75
6.5	BtB Connector Check	77
6.6	Dot Marking 2	78
7	Revision History	79

For general information about mechanical repair related issues, refer to 000154064: Generic Repair Manual - mechanical

Always firstly disconnect the Battery BtB connector to cut off power supply when the Antenna Box Assy BT/Wi-Fi is disassembled.

Always connect the Battery BtB connector as last step before reassemble Antenna Box Assy BT/Wi-Fi.

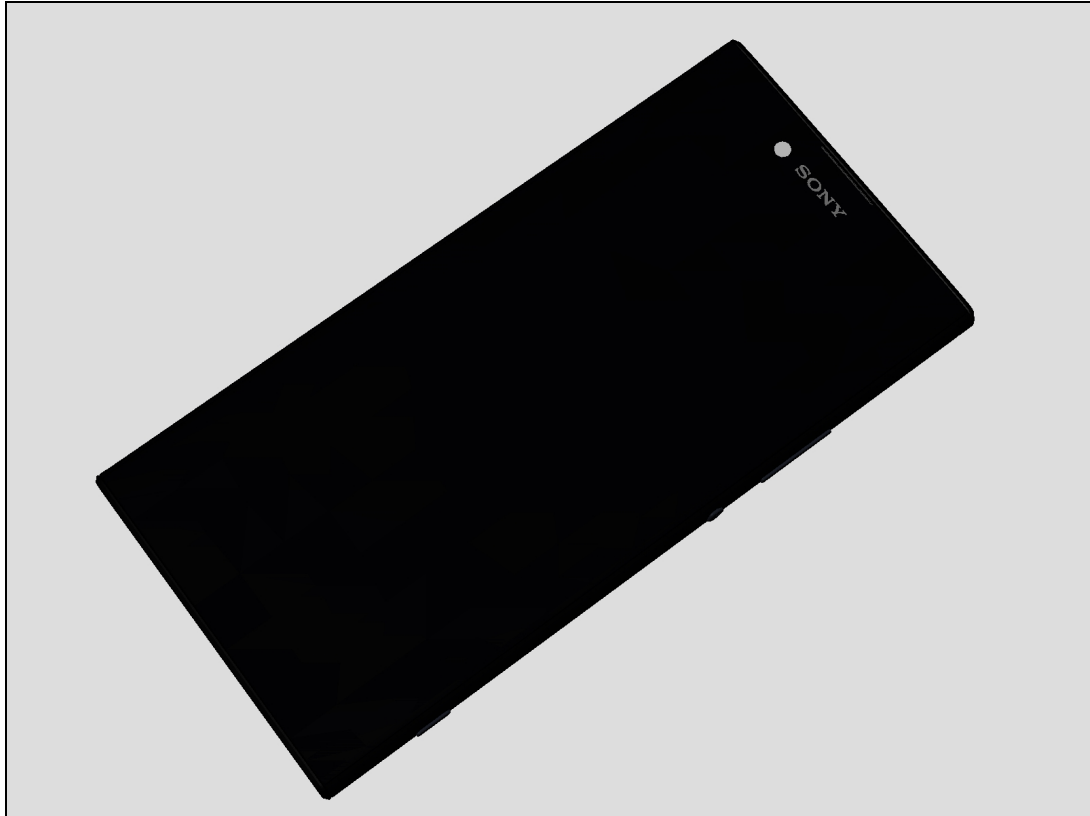
1309-7255 CS-Everest (Repair -Mechanical- Tools and Equipment (include Repair Software), Info-Center number is RE4251) Calibration or Aged Battery Reset by Emma must be performed when following Reassembly or Replacement.

Refer to the below table for requiring treatment for part reinstalling/replacing.

		CS-Everest Calibration			Emma
		Proximity Light Sensor	Smart Amp	Color ID Flashing	Aged Battery Reset
Reassembly	Main PBA	O			
	Front Cover Assy	O			
	P- Sensor Rubber	O			
Replacement	Main PBA	O	O	O	
	Front Cover Assy	O			
	P- Sensor Rubber	O			
	Battery				O
	Main Antenna & Speaker Box Assy		O		

1 Exterior Views

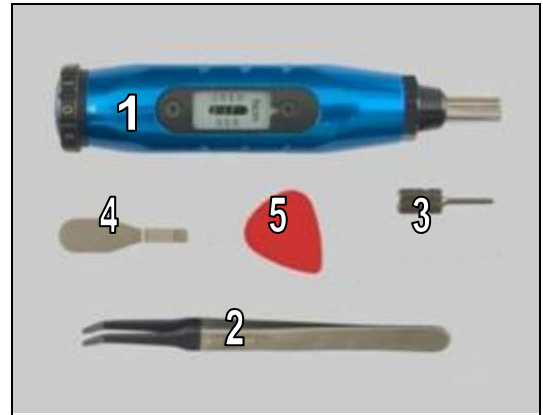
H3213/H3223/H4213/H4233



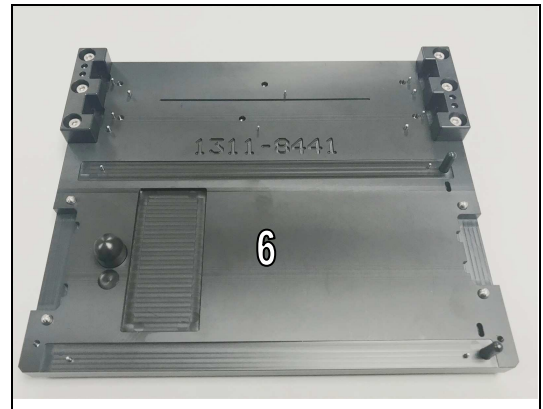
2 Tools

SPECIAL TOOLS

1. Torque Screwdriver
2. Flex Film Assembly Tool
3. Bits JCIS No.0
4. Front Opening Tool
5. Guitar Pick

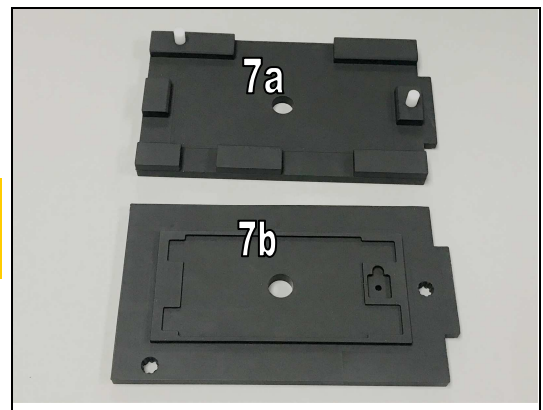


6. Panels Adhesive Fixture (1311-8441)



7. Press Rubber Inlay (1311-8439)

Note! Generic Wheel Press Tool(1311-1952) and Press Rubber Inlay(1311-8439) are used together for pressing Battery Cover Assy.

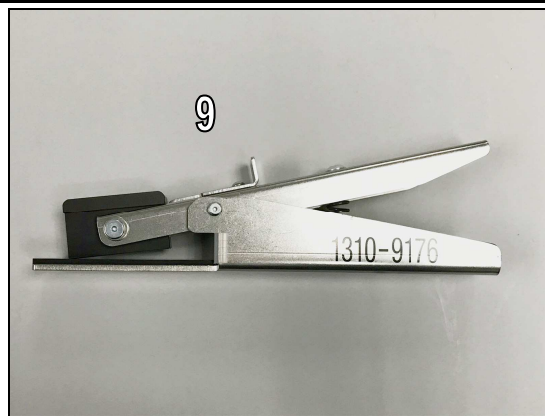


8. Press Pad NFC (1312-8806)



Tools

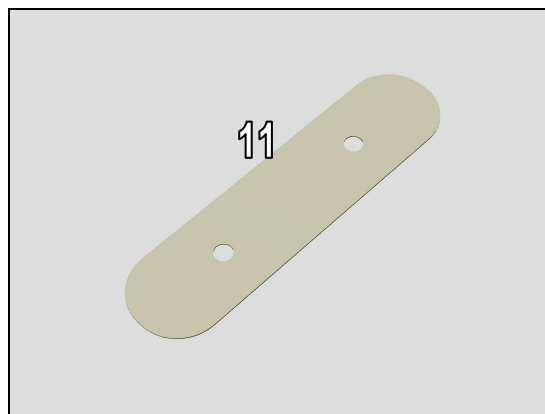
9. Press Clamp (1310-9176)



10. Press Spacer (1305-2638)



11. Flexible Disassembly tool (1284-7796)



12. Generic Wheel Press Tool (1311-1952)

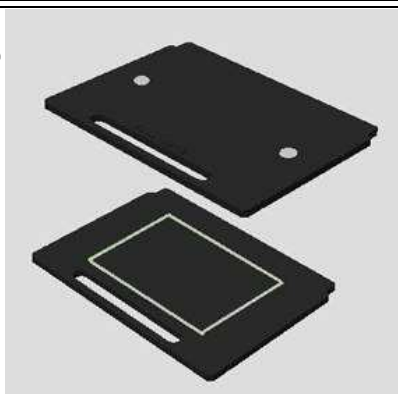


Tools

13. Inlay adapter (1311-2202)

Note! Generic Press Tool(1273-4413), Press Rubber Inlay (1311-8439) and Inlay adapter (1311-2202) are used together for pressing Battery Cover Assy.

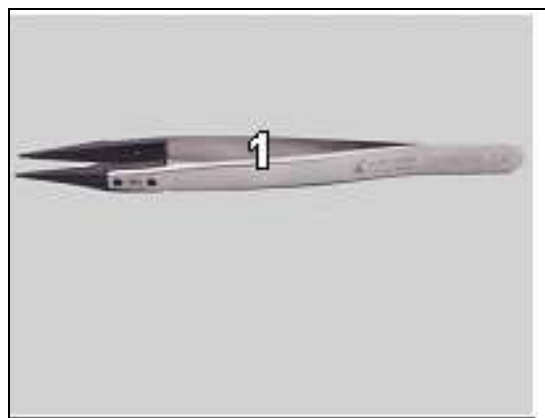
13



Tools

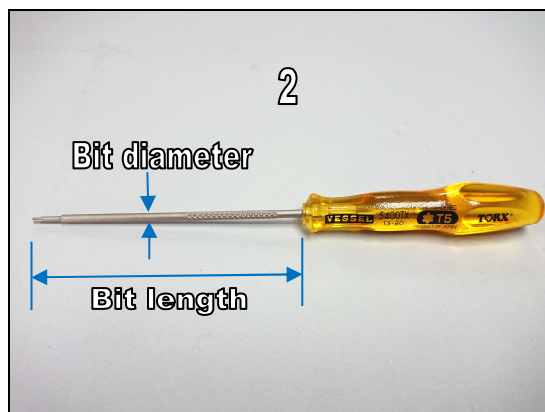
STANDARD TOOLS

1. Pointed Plastic Tweezers



2. T5 Screwdriver

The bit length is no less than 80mm, and bit diameter is no thicker than 2.5mm.



3. Suction Cup

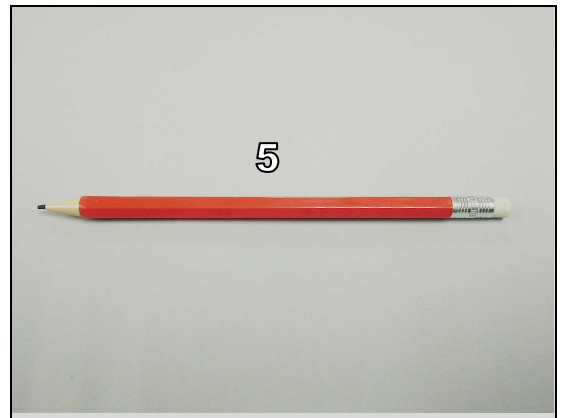


4. Hot Air Gun with Temp control



Tools

5. Pencil with eraser head (local source)



3 Mandatory Replacement Parts List

The Mandatory Replacement Parts List is embedded.

Click the icon to open the file.



H32 H42
Mandatory Replacement

Targeted replacement parts are listed

Mandatory replacement part	SPACE	Refurbish	Antenna Assy DIV/BT/WiFi/GPS	Audio Jack Assy	Battery	Battery Cover Assy	Display Cover Assy	Front Camera	Key Camera	Key Power_Volume	Main Antenna Speaker Assy	Main Camera	Main Camera Lens Assy	NFC Antenna	Receiver	RF Cable	Side Deco Left	Side Deco Right	Side Key FPC Assy	Sub PSA Assy	Main PSA
Adhesive Battery Cover Bottom	306Q1N1000																				
Adhesive Battery Cover Left	X00S100001																				
Adhesive Battery Cover Right	X00S100004																				
Adhesive Battery Cover Top	306Q1N1000																				
Adhesive Camera Key FPC	X00S101000																				
Adhesive LCM Left Side	306Q1N1000																				
Adhesive LCM Right Side	306Q1N1000																				
Adhesive Main Camera	306Q1N1000																				
Adhesive NFC	306Q1N1000																				
Adhesive Power_Volume Key FPC	X00S101001																				
Adhesive Receiver	306Q1N1000																				
Adhesive Side Deco Left	306Q1N1000																				
Adhesive Side Key FPC A	X00S101000																				
Adhesive Side Key FPC B	X00S101004																				
Adhesive Sponge Front Camera	306Q1N1000																				
Antenna Assy DIV/BT/WiFi/GPS F3111/F3112	78PA370001																				
Antenna Assy DIV/BT/WiFi/GPS F3113	78PA370002																				
Antenna Assy DIV/BT/WiFi/GPS F3115/F3116	78PA370003																				
Audio Jack Assy	78PA320001																				
Battery	1298-0230																				
Battery Cover Assy Black	78PA300003																				
Battery Cover Assy White	78PA300006																				
Battery Cover Assy Lime Gold	78PA300004																				
Battery Cover Assy Rose Gold	78PA300000																				
Cap SIM/SD Black	306JYV3602V																				
Cap SIM/SD Silver	306JYV3601V																				
Cap SIM/SD Lime Gold	306JYV3603V																				
Cap SIM/SD Rose Gold	306JYV3604V																				
Conductive Gasket Main Camera Bracket	306A1N1000																				
Conductive Tape Front Camera	X00S101016																				
Conductor Foil Battery Cover	306A1N1000																				
Conductor Foil Front Camera	306A1N1000																				
Conductor Tape Sub PSA	306A1N1000																				
CU Label	X00S100000																				
CU Label Tray	306L1N1000																				
Display Cover Assy Black	78PA310001																				
Display Cover Assy White	78PA310006																				
Display Cover Assy Lime Gold	78PA310000																				
Display Cover Assy Rose Gold	78PA310005																				
Film Mirror Audio Jack	306L1N1000																				
Film Mirror Audio Jack FPC	306L1N1000																				
Film Mirror Battery Left	306L1N1000																				
Film Mirror Battery Right	306L1N1000																				
Front Camera	78PA300000																				
Key Camera Black	3125N10000																				
Key Camera Silver	3125N10000																				
Key Camera Lime Gold	3125N10000																				
Key Camera Rose Gold	3125N10000																				
Key Power_Volume Black	3125N10000																				
Key Power_Volume Silver	3125N10000																				
Key Power_Volume Lime Gold	3125N10000																				
Key Power_Volume Rose Gold	3125N10000																				
Main Antenna Speaker Assy F3111/F3112	78PA300001																				
Main Antenna Speaker Assy F3113	78PA300002																				
Main Antenna Speaker Assy F3115/F3116	78PA300003																				
Main Camera	78PA300001																				
Main Camera Lens Assy	78PA300001																				
NFC Antenna	2300VY3602V																				
Receiver	2240000021V																				
RF Cable	1330001311V																				
Rubber Audio Jack BTB Connector	302AVY3601V																				
Rubber Front Camera BTB Connector	302AVY3603V																				
Rubber LCM I/F BTB Connector	302AVY3604V																				
Rubber Main Camera BTB Connector	302AVY3605V																				
Rubber Main MIC	302AVY3602V																				
Rubber PL Sensor	302A1N1000																				
Rubber Sub PSA BTB Connector	302AVY3601V																				
Screw CROSS M1.2 L1.8 Black	2700000000V																				
Screw TORX M1.2 L1.8 Silver	2700000000V																				
Side Deco Left Black	251K1N1000																				
Side Deco Left Silver	251K1N1010																				
Side Deco Left Lime Gold	251K1N1030																				
Side Deco Left Rose Gold	251K1N1040																				
Side Deco Right Black	254FYV3606V																				
Side Deco Right Silver	254FYV3603V																				
Side Deco Right Lime Gold	254FYV3609V																				
Side Deco Right Rose Gold	254FYV3613V																				
Side Key FPC Assy	78PA300001																				
SIM Tray Dual	306A1N1000																				
SIM Tray Single	306A1N1010																				
Sponge Main Camera BTB Connector	303MYV3606V																				
Sponge Speaker Main MIC	303MYV3607V																				
Sub PSA Assy F3111/F3112	78PA300001																				
Sub PSA Assy F3113/F3115/F3116	78PA300003																				
Washer Nylon Screw	306G1N1010																				
Water Intrusion Label	82K800001V																				
Water Intrusion Label Rectangle	82VY80001V																				

Mandatory replacement parts for refurbishment.

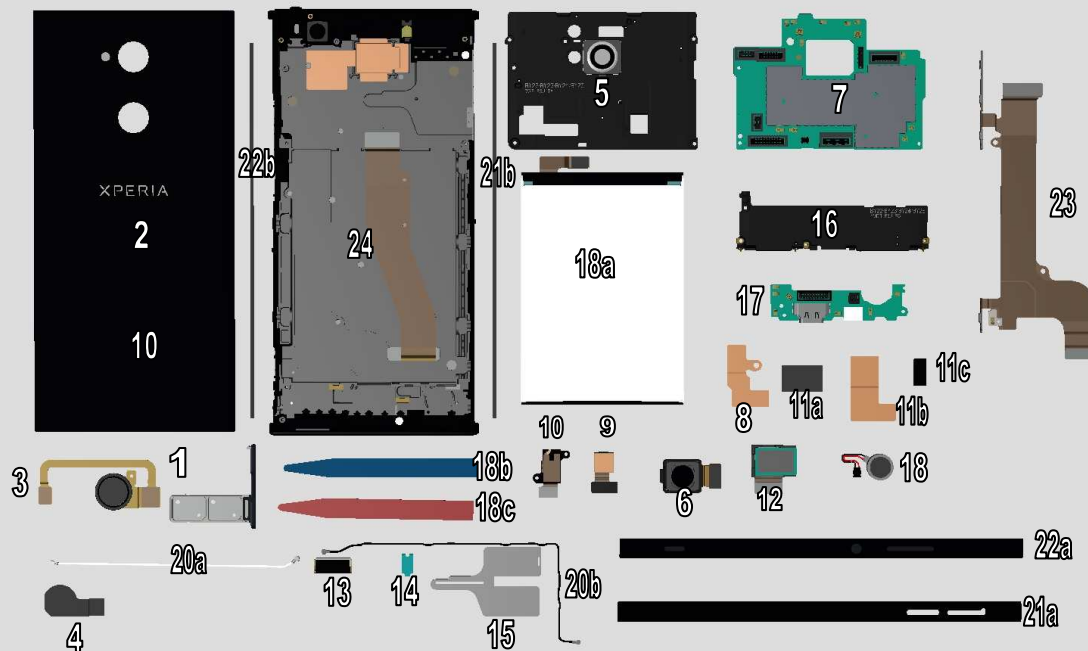
Parts that is required to replace in addition to target replacement parts.

Number in the cells indicates parts require replacing for target part.

4 Disassembly

The disassembly is done in the following order:

1. Cap Tray
2. Battery Cover Assy
3. FP Module Assy
4. Conductive Tape Sub Antenna
5. Antenna Box Assy BT/Wi-Fi
6. Main Camera
7. Main PBA
8. Conductive Tape Front Camera
9. Front Camera
10. Audio Jack FPC
11. Sponge Wide-angle Front Camera Back Side (a) & Conductive Tape Wide-angle Front Camera (b) & Mylar Wide-angle Front Camera (c)
12. Wide-angle Front Camera
13. Ear Speaker
14. Front Camera Front Flash LED PCB
15. CU Label Tray
16. Main Antenna & Speaker Box Assy
17. Sub PBA
18. Vibrator
19. Battery (a) & Adhesive Battery Left (b) & Adhesive Battery right (c)
20. RF Cable Black (a) & RF Cable White (b)
21. Side Panel Cap (a) & Sponge Front Assy Cap Side (b)
22. Side Panel Keys Assy (a) & Sponge Front Assy Key Side
23. Side Key FPC Assy
24. Front Cover Assy



Disassembly

Disassembly Quick Reference Chart is embedded.

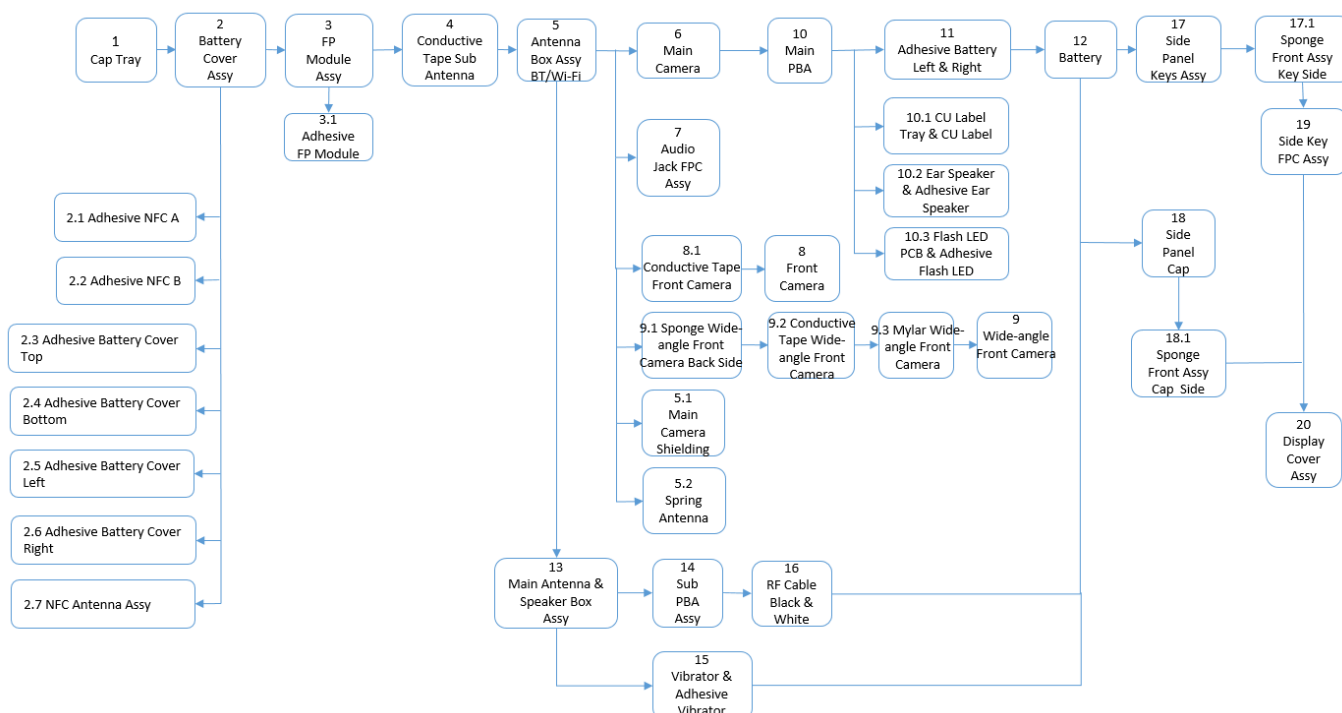


Disassembly
Procedure.pdf



Required disassembly procedures of specific part removing can be identified by Disassembly Quick Reference Chart.

The following is the sample how to identify the procedures.



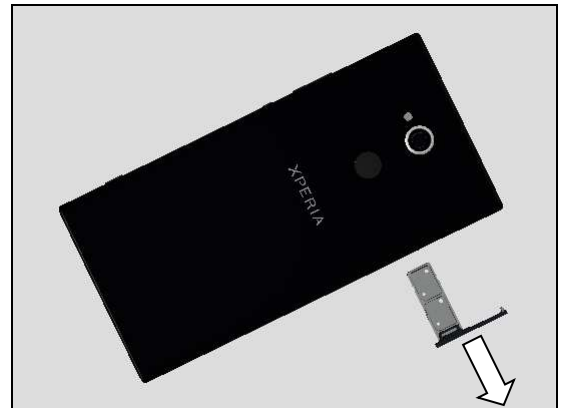
Disassembly

4.1 Cap Tray

Open the Cap Tray as indicating position.



Remove it by fingers.



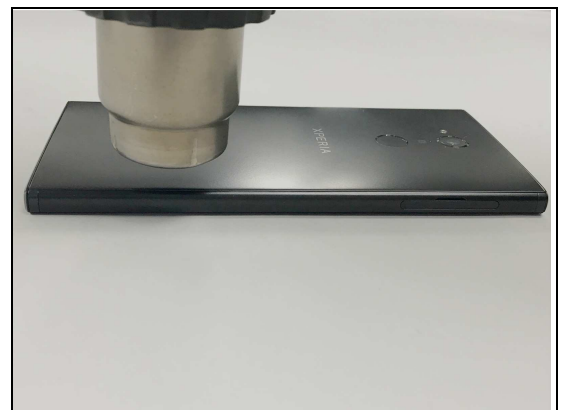
4.2 Battery Cover Assy

Note!

**Before removing the Battery Cover Assy,
Check if it has any damage such as dimple/dent.
Due to dimple/dent on Battery Cover Assy, may indicate
inside battery damaged.
Check the Battery condition to follow the "6 Battery
Reuse instruction".**

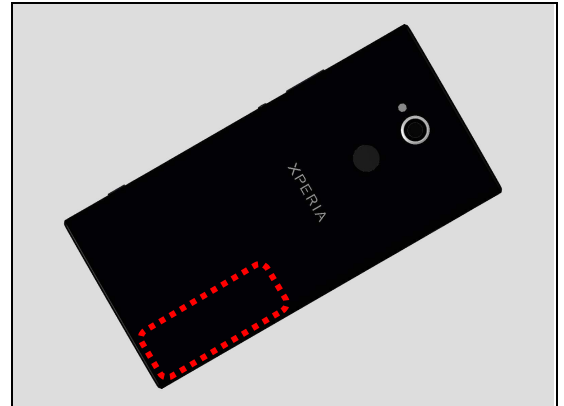


Place Hot Air Gun nozzle at approximate 1cm above the bottom side of the unit with setting temperature 70 degree.



Disassembly

Heat as indicated area for 30 seconds-1 minute.



Place the Suction Cup on the Battery Cover Assy as position shown.

**Do not put the suction cup onto the upper and middle area of the Battery Cover Assy for disassembly.
NFC Antenna could be damaged.**



Pull the Suction Cup upwards to make the gap for inserting the Flexible Disassembly tool.

Be careful not to insert too deep to damage the Battery!



Remove the Suction Cup.



Disassembly

Slide the Flexible Disassembly tool to the bottom side to detach this side of Battery Cover Assy.

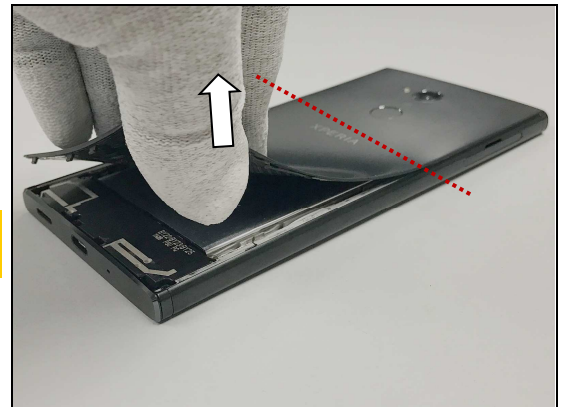


Pull upwards to unsnap the corner hook as shown.

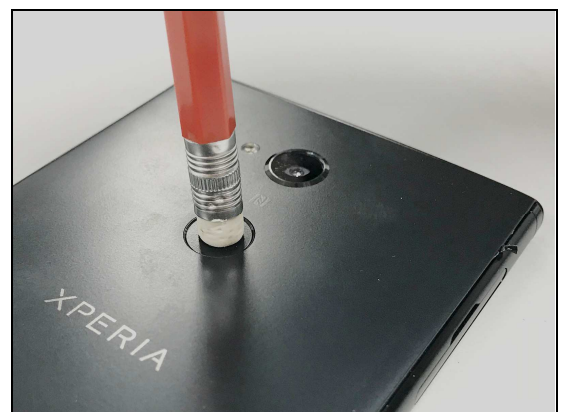


Continue lifting to detach the Battery Cover Assy until the marked line position.

Note! During this action the Battery Cover Assy may deform, if not damaged it can be reused.

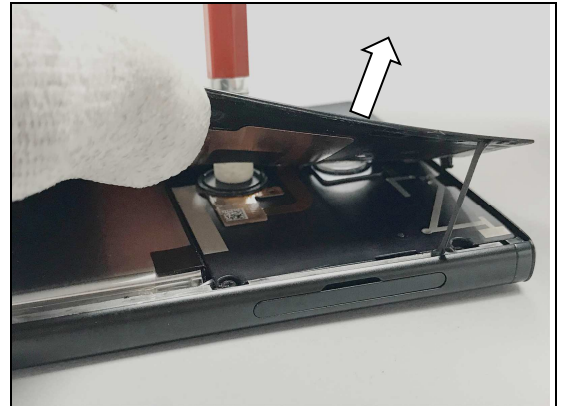


While holding the Battery Cover Assy, insert the eraser head of the Pencil to push against the FP Module Assy

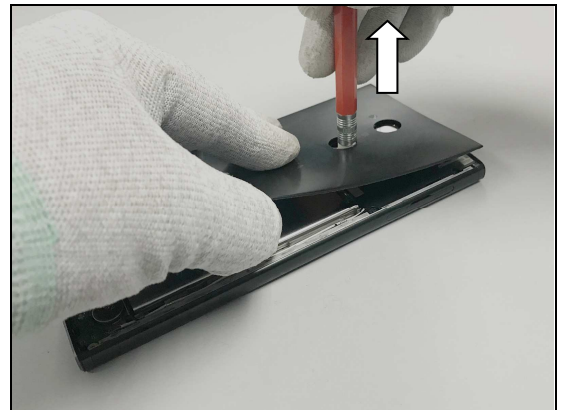


Disassembly

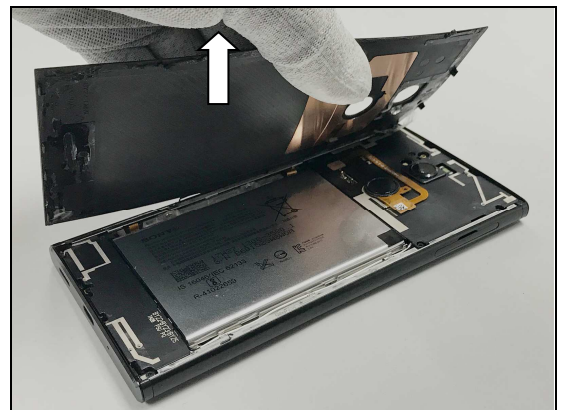
Lift to detach the Battery Cover Assy from the Adhesive FP Module as shown gently.



Remove the pencil after FP Module is released from the Battery Cover Assy.



Detach to remove the Battery Cover Assy.



Separate the Battery Cover Assy from the Unit.

Note! During this action the Battery Cover Assy may get deformed!

Inspect hooks have no damage and Battery Cover Assy can be reused!



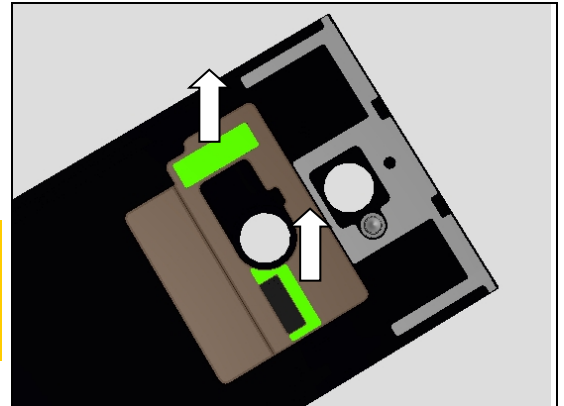
Disassembly

4.2.1 Adhesive NFC A and Adhesive NFC B

Detach to remove the Adhesive NFC A and Adhesive NFC B.

Scrap! Not to be reuse!

Make sure all remaining adhesive residue have been removed! Then use Isopropyl Alcohol – 99 % to clean around the attaching area.



4.2.2 Adhesive Battery Cover Top, Adhesive Battery Cover Bottom, Adhesive Battery Cover Left and Adhesive Battery Cover Right

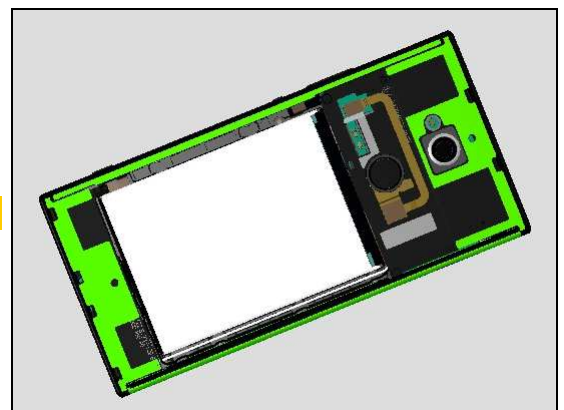
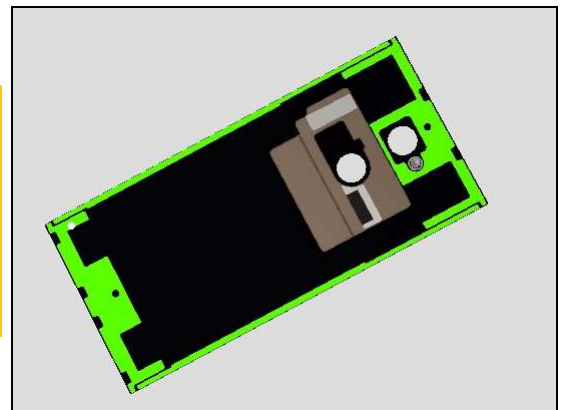
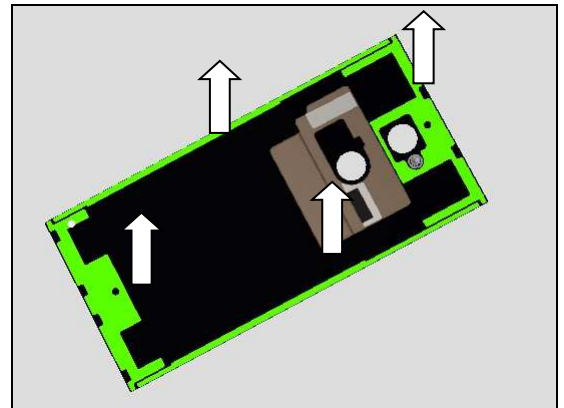
Detach to remove the Adhesive Battery Cover Top, Adhesive Battery Cover Bottom, Adhesive Battery Cover Left and Adhesive Battery Cover Right.

Scrap! Not to be reuse!

Make sure all remaining adhesive residue have been removed!

Then use Isopropyl Alcohol – 99 % to clean around the attaching area.

Heating with hot air at 60 degree around 30s may help to remove if you find them difficult to remove.



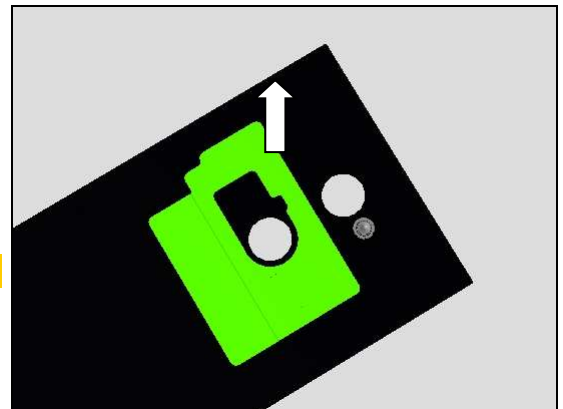
Clean the remaining residue on the Unit side!

Disassembly

4.2.3 NFC Antenna Assy

Detach to remove the NFC Antenna Assy.

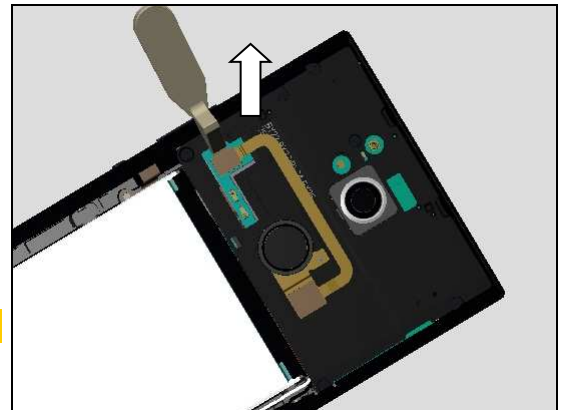
Scrap! Not to be reuse!



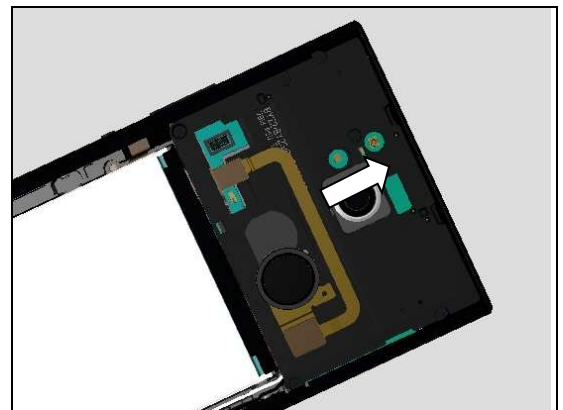
4.3 FP Module Assy & Adhesive FP Module

Disconnect the FP Module BtB connector by using the Front Opening Tool.

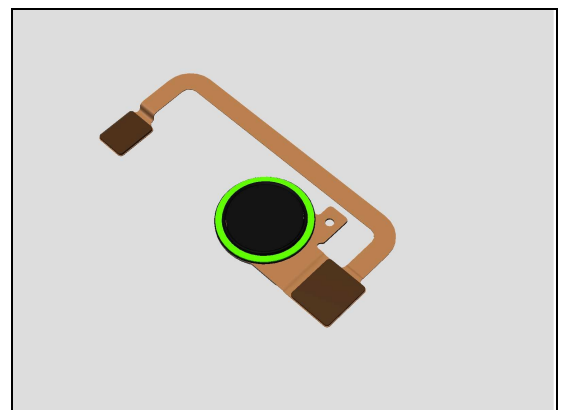
Be careful not to damage components on the Main PBA!



Remove the FP Module Assy by fingers.



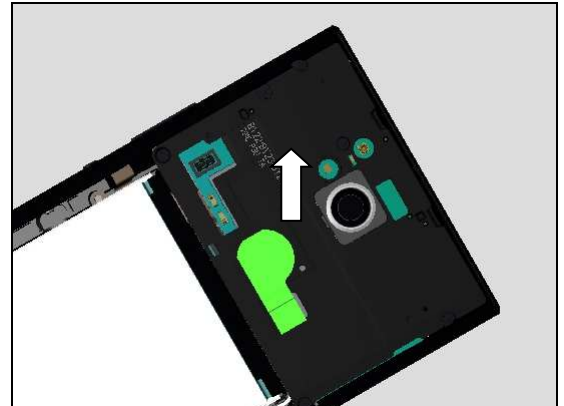
Detach to remove the Adhesive FP Module and clean all residue until its fully removed.



Disassembly

4.4 Conductive Tape Sub Antenna

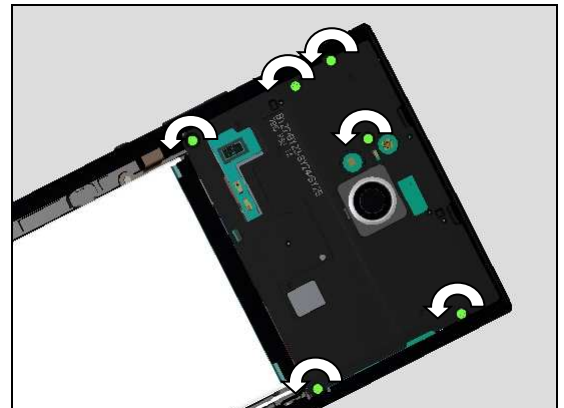
Detach to remove the Conductive Tape Sub Antenna.



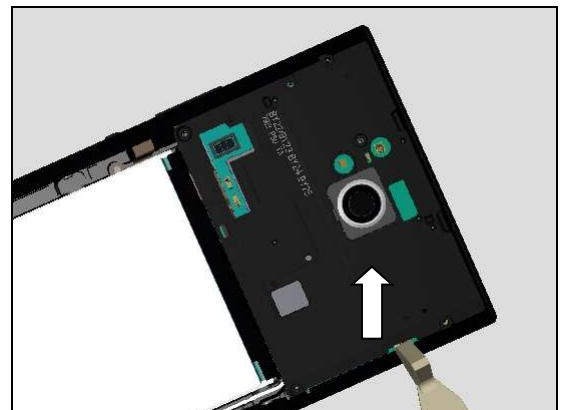
4.5 Antenna Box Assy BT/Wi-Fi

4.5.1 Antenna Box Assy BT/Wi-Fi

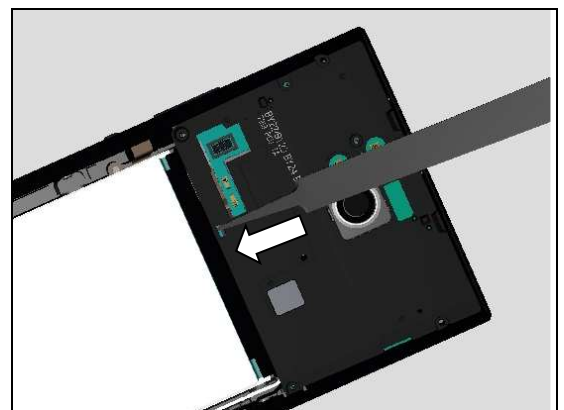
Remove the six Screw Cross by using a screwdriver with Bits JCIS No.0.



Insert the Front Opening Tool as shown position and pull upwards to unsnap the hook to release this side of Antenna Box Assy BT/Wi-Fi.



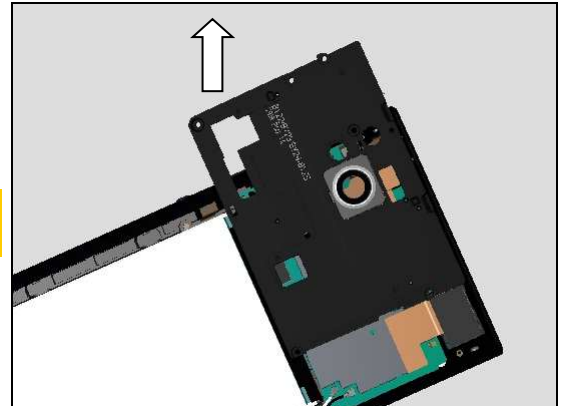
Push through the hole by using plastic tweezers as indicating direction to release the hook on the bottom side of the Antenna Box Assy BT/Wi-Fi.



Disassembly

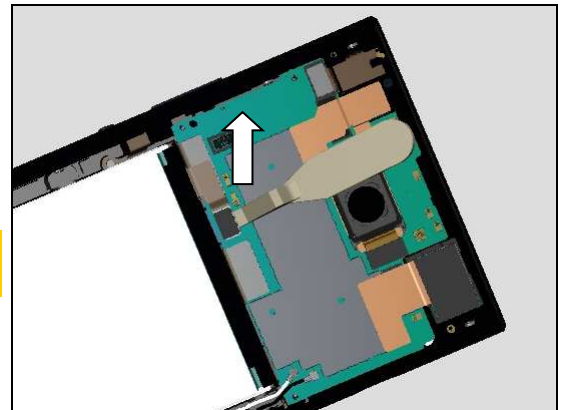
Remove the Antenna Box Assy BT/Wi-Fi.

Inspect the pattern to make sure no scratch of Antenna Box Assy BT/Wi-Fi!



Disconnect the BtB connector of the Battery by using the Front Opening Tool.

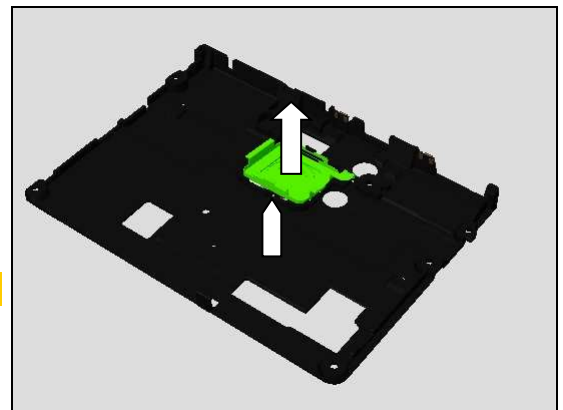
Be careful! Do not damage the NFC contact springs and other components on the Main PBA!



4.5.2 Main Camera Shielding

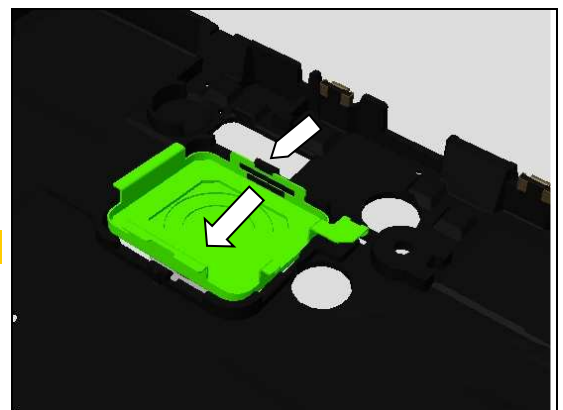
Push from the back side of the Main Camera Shielding to release the hook as shown by fingers.

Be careful! Do not damage the hook.



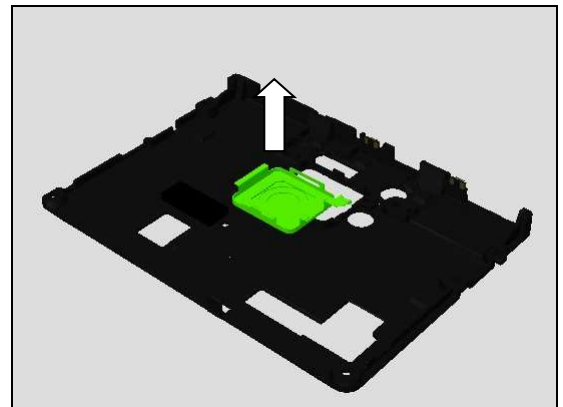
Release the Main Camera Shielding from the indicated rib with fingers.

Be careful! Do not damage the rib.



Disassembly

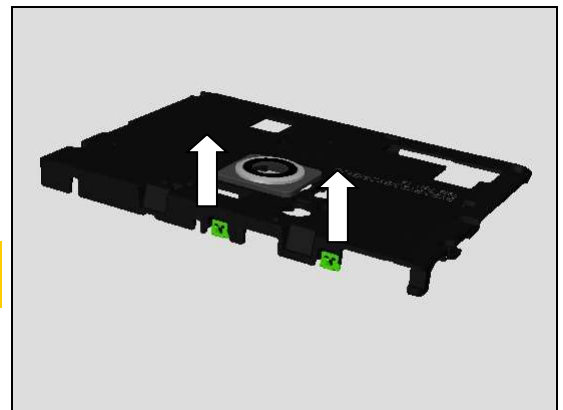
Remove the Main Camera Shielding.



4.5.3 Spring Antenna

Release the two Spring Antenna and remove them.

Scrap! The Spring Antenna cannot be reused after removal.

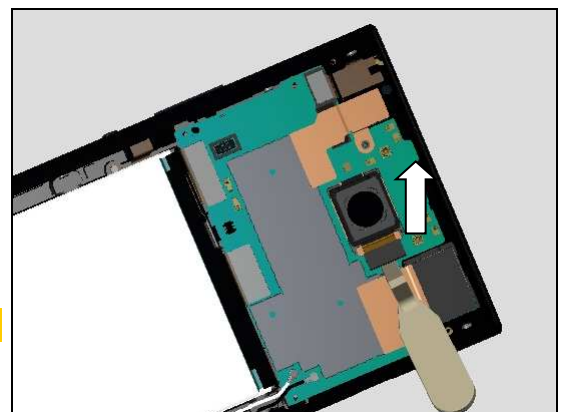


4.6 Main Camera

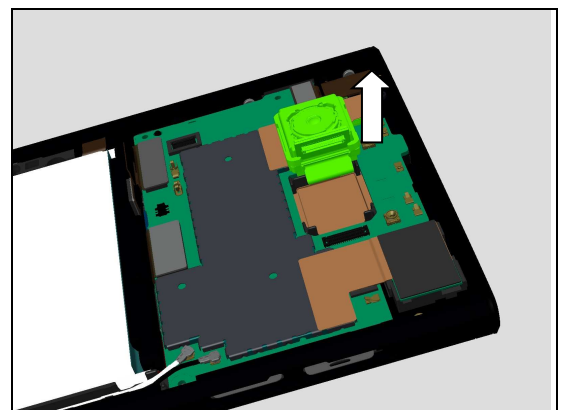
4.6.1 Main Camera

Disconnect the Main Camera BtB connector by using the Front Opening Tool.

Do not damage components on the Main PBA!



Remove the Main Camera.

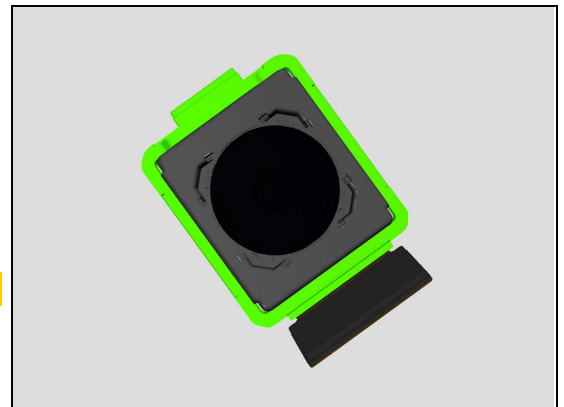


Disassembly

4.6.1 Main Camera Rubber

Separate the Main Camera Rubber from the Main Camera carefully.

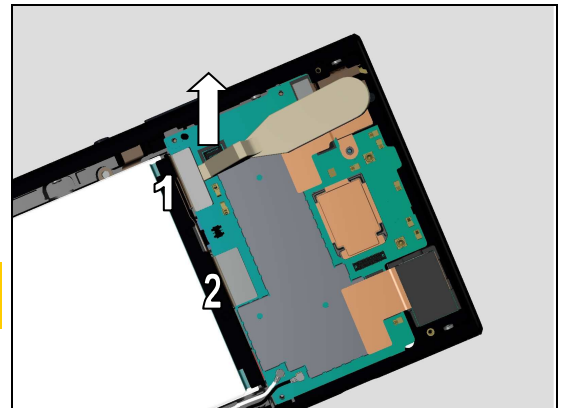
Do not touch the Camera Lens!



4.7 Main PBA

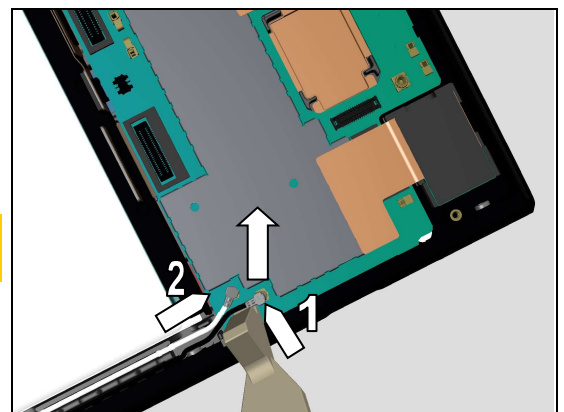
Disconnect the BtB connector of Side Key FPC Assy and Display FPC carefully by using the Front Opening Tool.

Be careful! Do not damage the NFC contact spring and other components on the Main PBA!

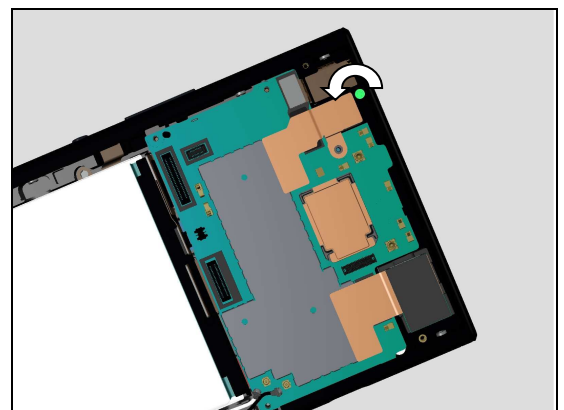


Disconnect the RF coax connectors by the Front Opening Tool from shown direction.

Be Careful of not to damage components on the Main PBA!



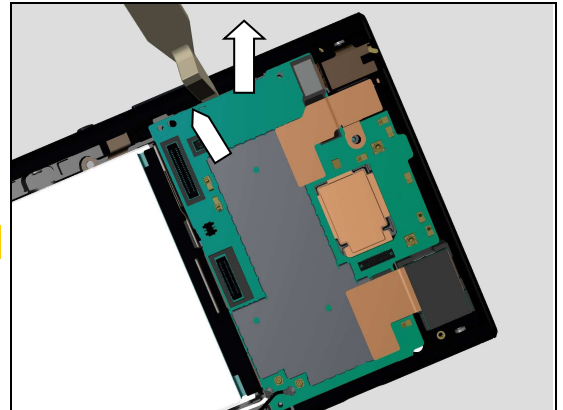
Remove the Screw Cross by using a screwdriver with Bits JCIS No.0.



Disassembly

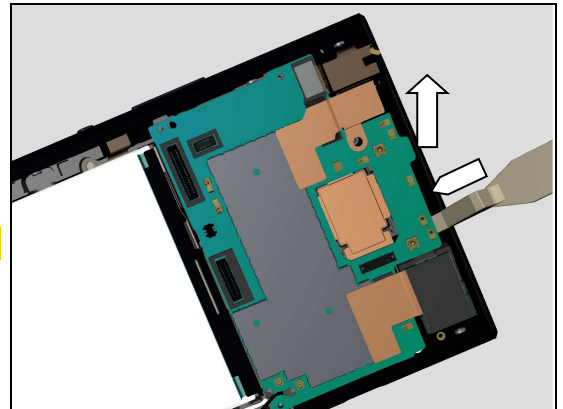
Unsnap this hook by using the Front Opening Tool as shown in picture

Be careful with the components on the Main PBA!



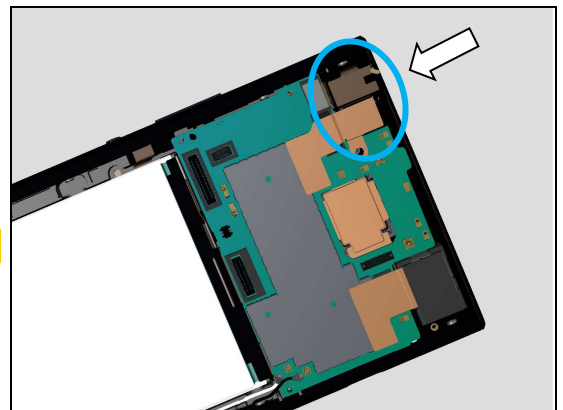
Unsnap the hook on the top side by using the Front Opening Tool as shown position in picture.

Be careful with the components on the Main PBA!

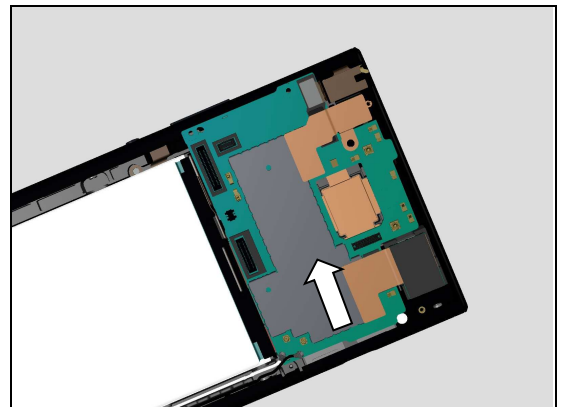


Lift up the top side to release the Audio Jack FPC and Front Camera from their cavities carefully as shown in picture.

Be careful of not to touch the spring pins!

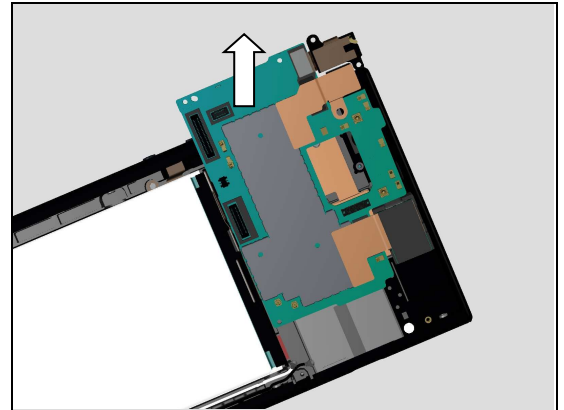


Release the Main PBA from SIM/SD hole as shown in picture.



Disassembly

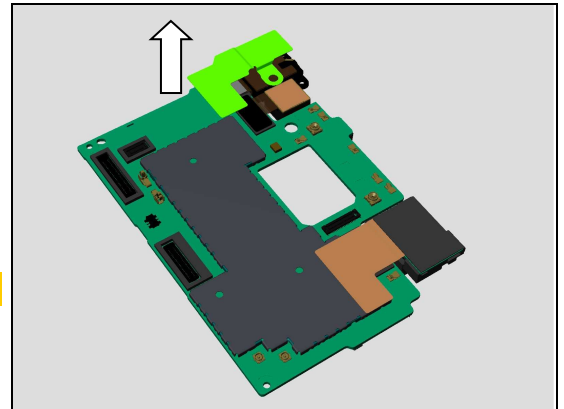
Remove the Main PBA.



4.7.1 Conductive Tape Front Camera

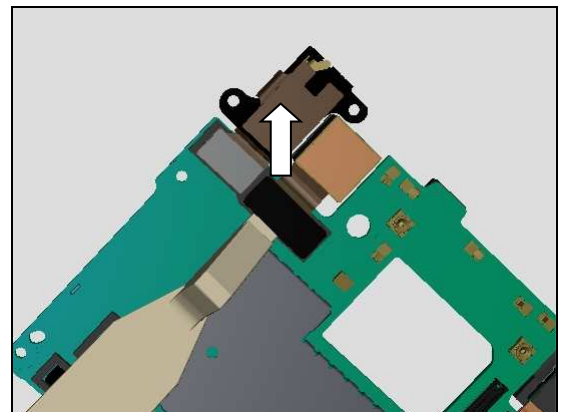
Detach to remove the Conductive Tape Front Camera carefully with Plastic Tweezers.

Scrap! Cannot be reused!



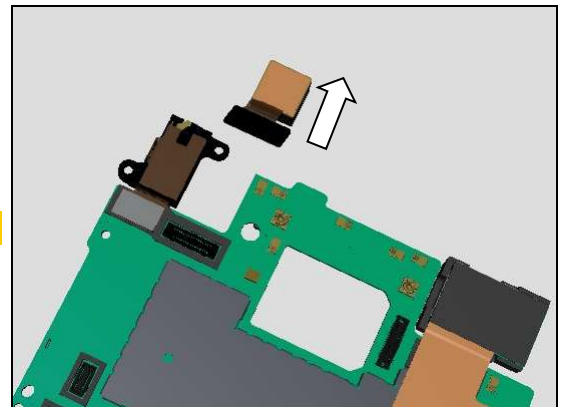
4.7.2 Front Camera

Disconnect the BtB connector of Front Camera.



Remove the Front Camera gently.

Do not touch the lens side of the Front Camera!

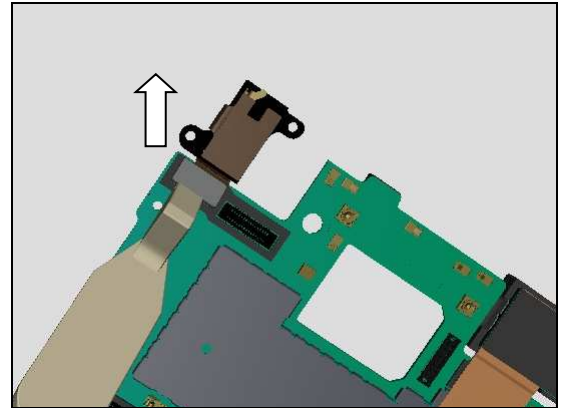


Disassembly

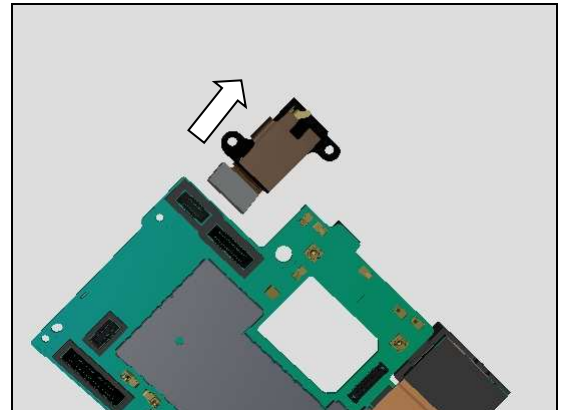
4.7.3 Audio Jack FPC

4.7.3.1 Audio Jack FPC

Disconnect the BtB connector of Audio Jack FPC.

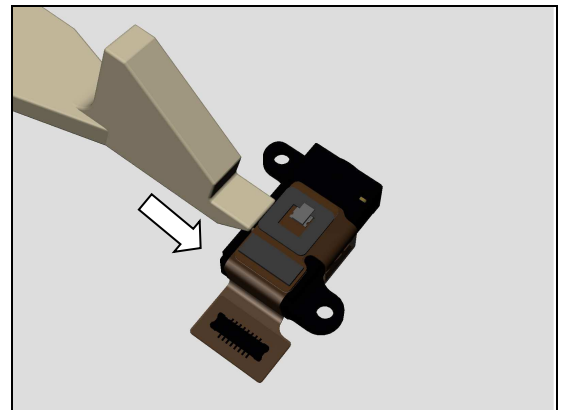


Remove the Audio Jack FPC gently.

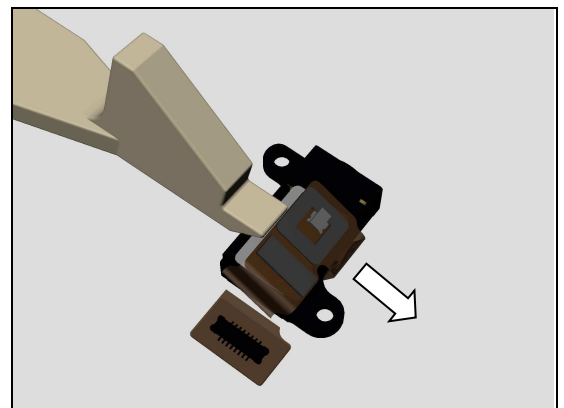


4.7.3.2 Adhesive Audio Jack

Insert the Front Opening Tool as shown position



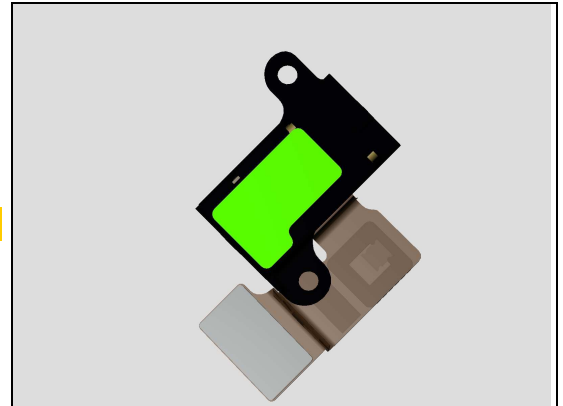
And pull upwards to release the FPC of Audio Jack FPC from the Audio Jack body.



Disassembly

Detach to remove the Adhesive Audio Jack.

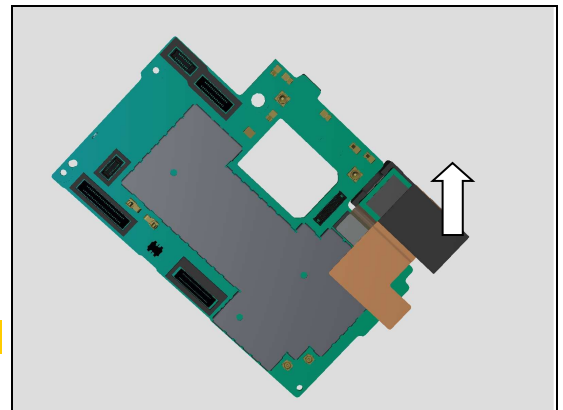
Clean all residue until its fully removed!



4.7.4 Sponge Wide-angle Front Camera Back Side & Conductive Tape Wide-angle Front Camera

Detach to remove the Sponge Wide-angle Front Camera Back Side and Conductive Tape Wide-angle Front Camera together carefully with Plastic Tweezers.

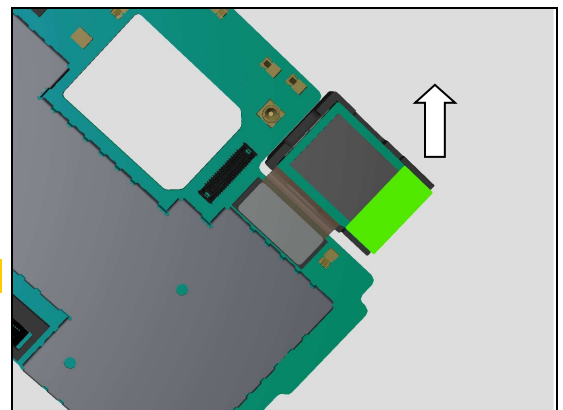
Scrap! Both of them cannot be reused after removal!



4.7.5 Mylar Wide-angle Front Camera

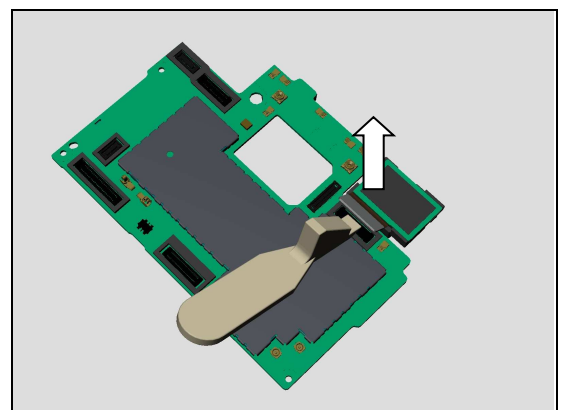
Detach to remove Mylar Wide-angle Front Camera.

Scrap! Cannot be reused!



4.7.6 Wide-angle Front Camera

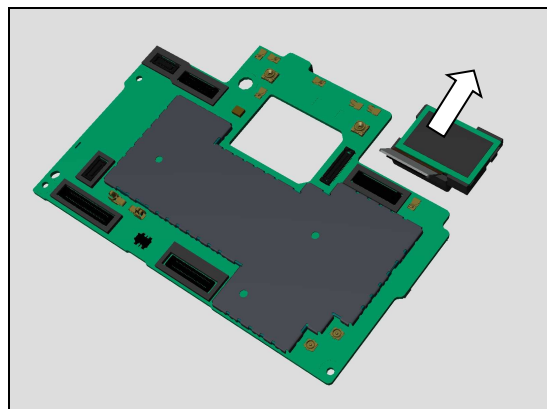
Disconnect the BtB connector of Wide-angle Front Camera.



Disassembly

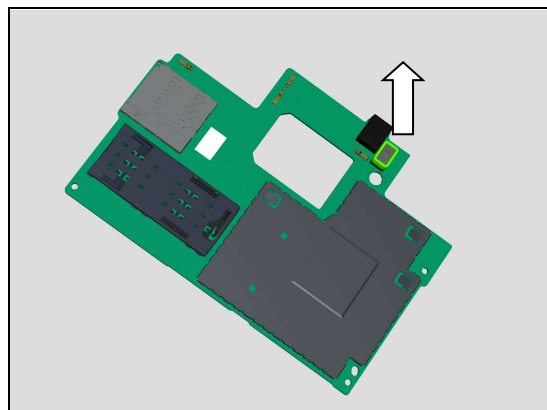
Remove the Wide-angle Front Camera.

Do not touch the camera lens!



4.7.7 P-Sensor Rubber

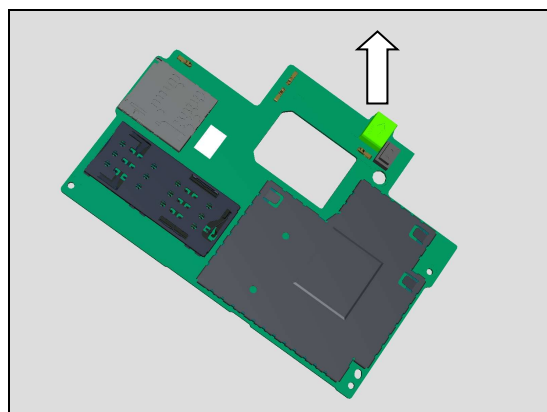
Remove the P-Sensor Rubber with fingers.



4.7.8 2nd Mic Rubber

Detach to remove the 2nd Mic Rubber.

Scrap! Not to be reused!



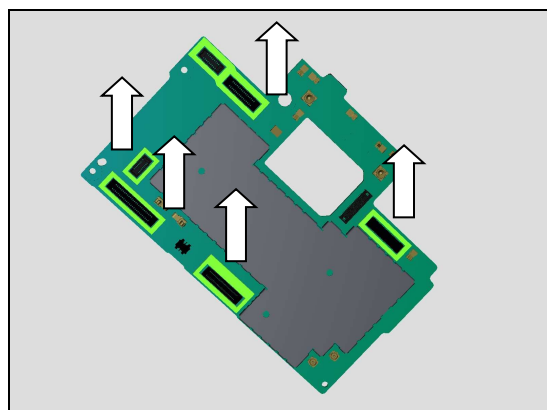
4.7.9 Gasket BtB Audio Jack, Gasket BtB Display FPC, Gasket BtB FP Module, Gasket BtB Wide-angle Front Camera & Gasket BtB Side Key FPC

Detach to remove these five Gasket BtB.

Scrap! Not to be reused!

Do not damage components on the Main PBA!

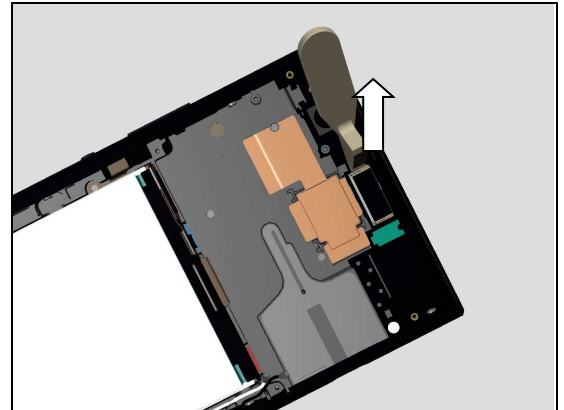
Make sure no remaining adhesive residue after removal!



Disassembly

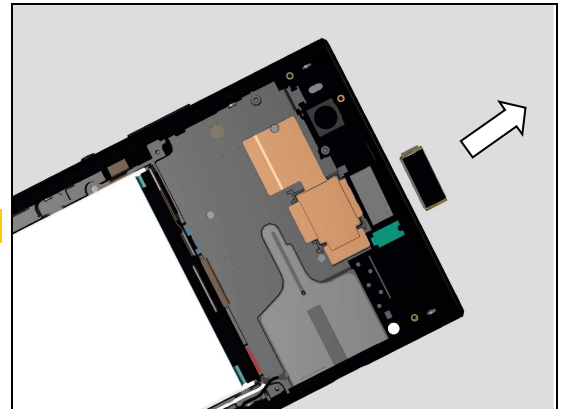
4.8 Ear Speaker & Adhesive Ear Speaker

Insert the Front Opening Tool from the cavity under the Ear Speaker and pull upwards to release the Ear Speaker.



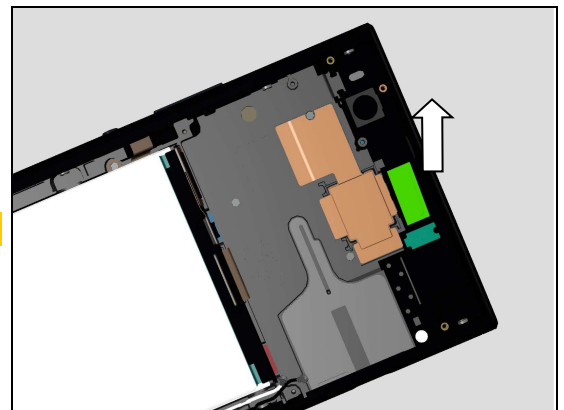
Remove the Ear Speaker.

Scrap! Cannot be reused!



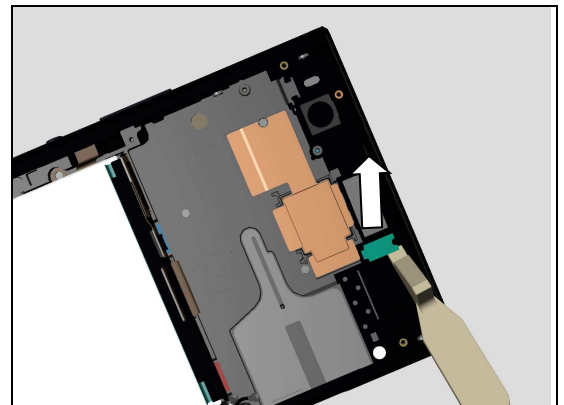
Detach to remove the Adhesive Ear Speaker.

Scrap! Cannot be reused!



4.9 Front Flash LED PCB & Adhesive Front LED PCB

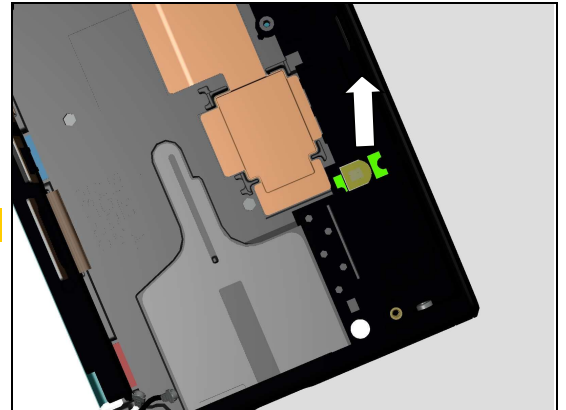
Insert the Front Opening Tool underneath the Front Flash LED PCB and pull upwards to release the Front Flash LED PCB.



Disassembly

Detach to remove the Adhesive Front LED PCB.

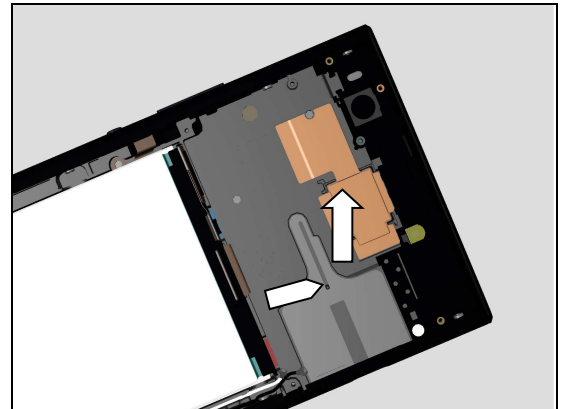
Scrap! Cannot be reused!



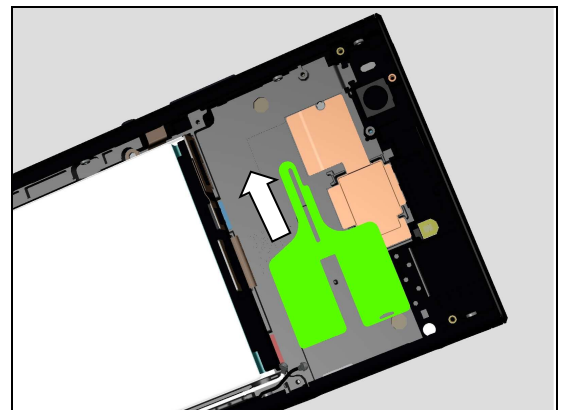
4.10 CU Label Tray

4.10.1 CU Label Tray

Release the CU Label Tray from its position pin.



Remove the CU Label Tray.

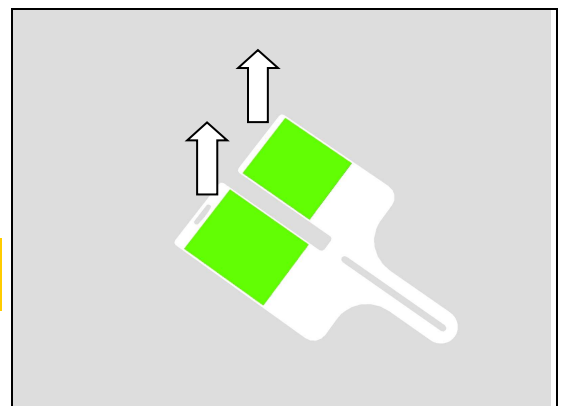


4.10.2 CU Label

Detach the CU Label.

Scrap! Not to be reused!

Do not damage the CU Label Tray!



Disassembly

4.11 Main Antenna & Speaker Box Assy

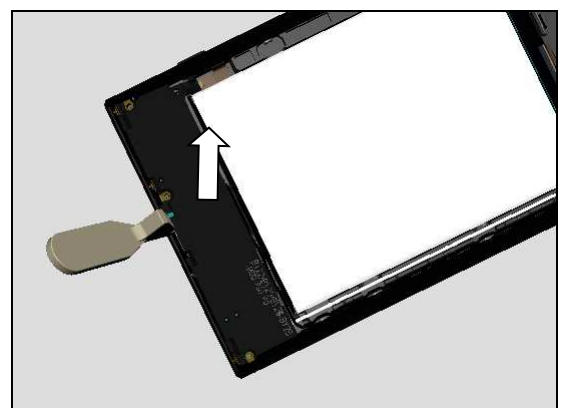
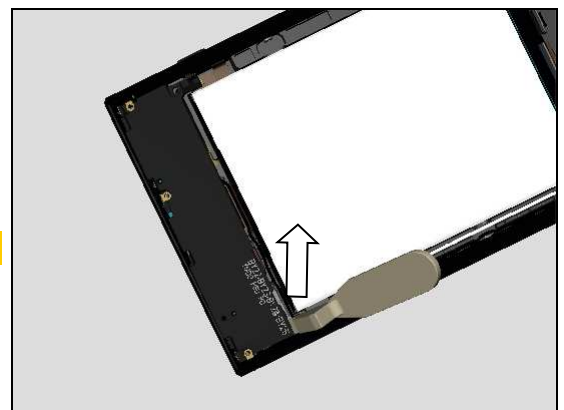
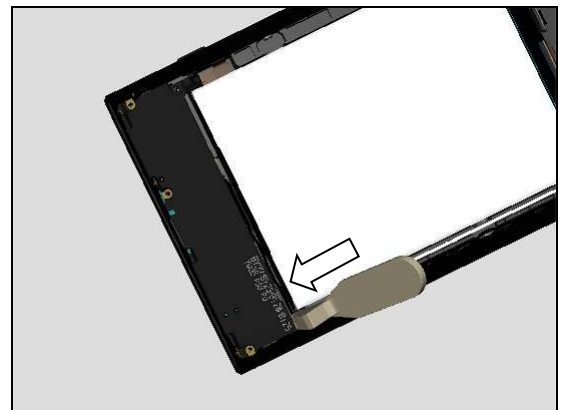
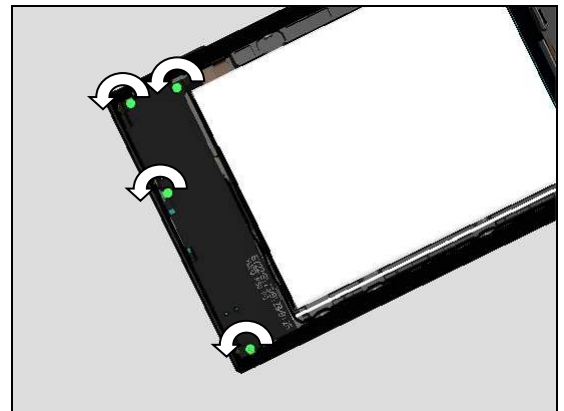
Remove the four Screw Cross by using a screwdriver with Bits JCIS No.0.

Insert the Front Opening Tool as shown position.

Pull upwards to release the snap hook of Main Antenna & Speaker Box Assy.

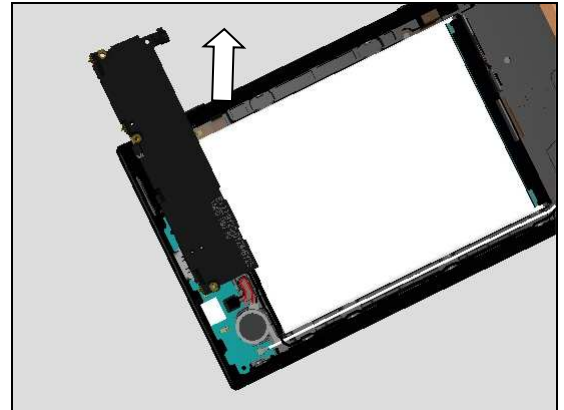
Do not touch the Battery!

Insert the Front Opening Tool as shown position and release the snap hook on the bottom side.



Disassembly

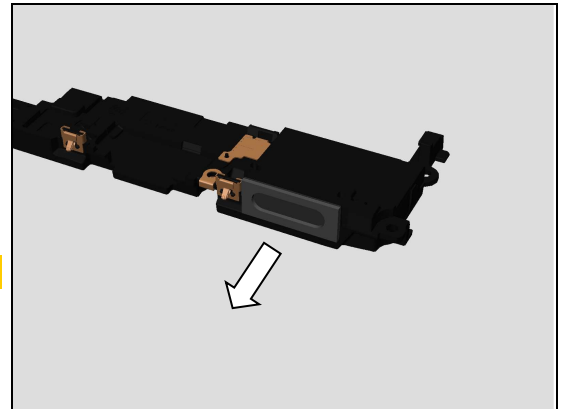
Remove the Main Antenna & Speaker Box Assy.



4.11.1 Speaker box Mesh

Detach the Speaker box Mesh by using the plastic tweezers.

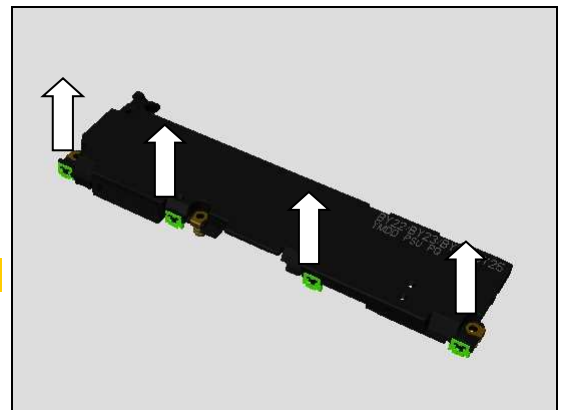
Scrap! Not to be reused!



4.11.2 Spring Antenna

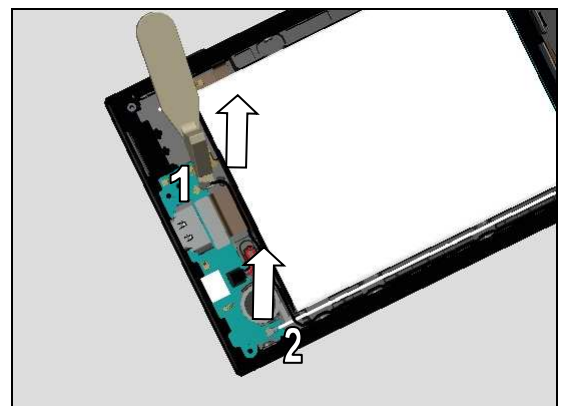
Release the four Spring Antenna and remove them.

Scrap! Not to be reused!



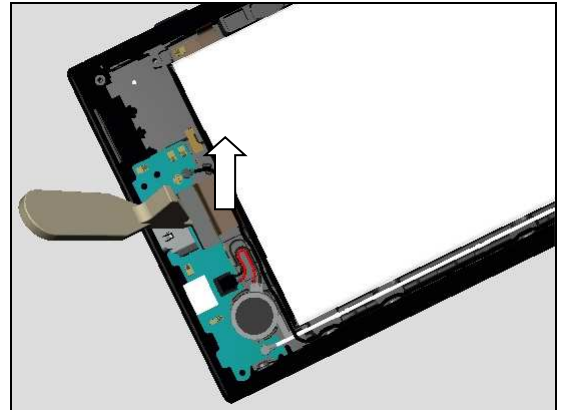
4.12 Sub PBA

Disconnect the RF Cable connectors.

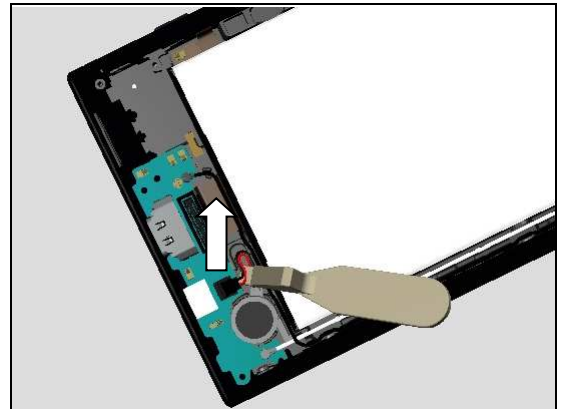


Disassembly

Disconnect the BtB connector of the Side Key FPC Assy.

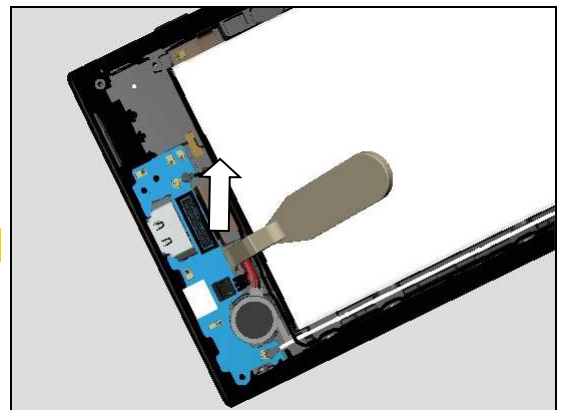


Disconnect the BtB connector of the Vibrator.

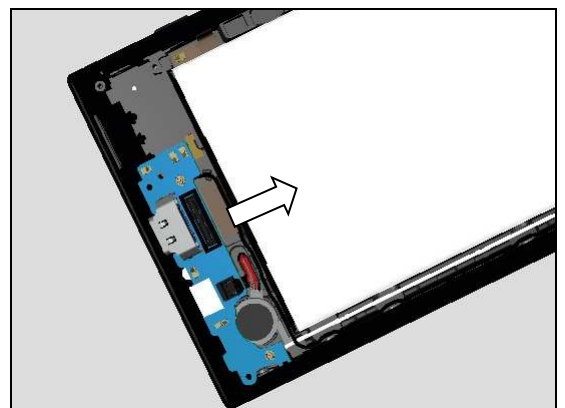


Insert the Front Opening Tool at this position underneath the Sub PBA and unsnap the Sub PBA as shown in picture.

Be careful with USB port during this action!



Remove the Sub PBA.

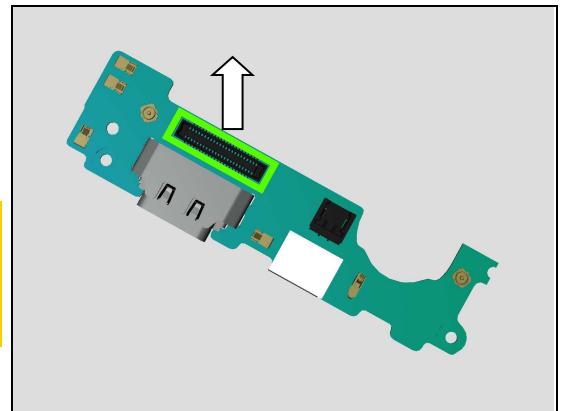


Disassembly

4.12.1 Gasket BtB Sub PBA

Detach the Gasket BtB Sub PBA.

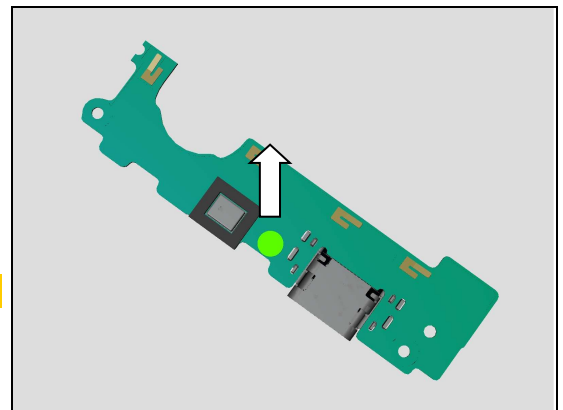
Scrap! Not to be reused!
Do not damage components on the Sub PBA Assy!
Make sure all remaining adhesive residue have been removed!



4.12.2 Water Intrusion Label

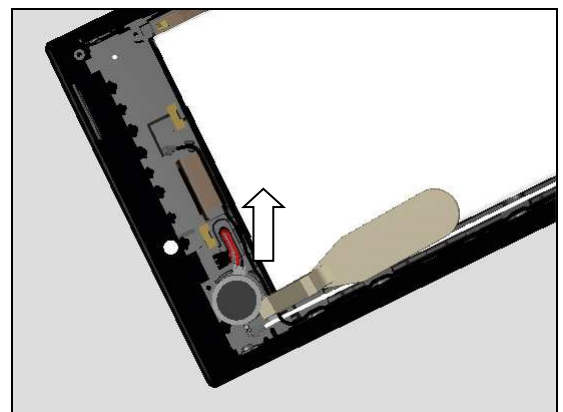
Detach and remove the Water Intrusion Label by using the plastic tweezers.

Scrap! Not to be reused!

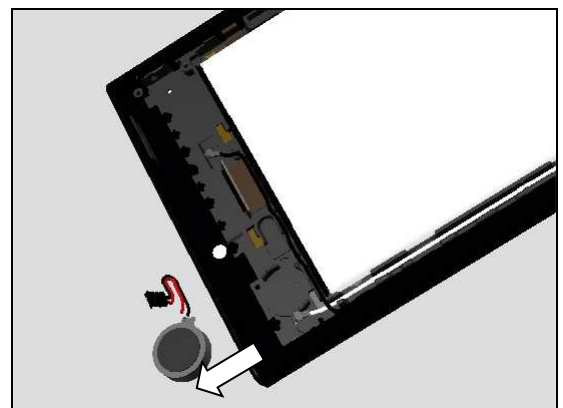


4.13 Vibrator & Adhesive Vibrator

Insert the Front Opening Tool from the cavity under the Vibrator and pull upwards to release it.



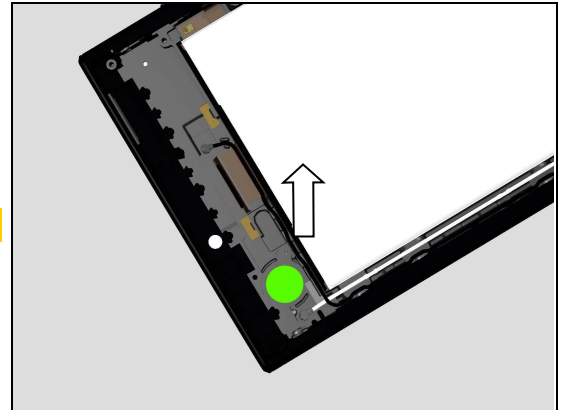
Remove the Vibrator.



Disassembly

Detach to remove the Adhesive Vibrator.

Scrap! Cannot be reused!



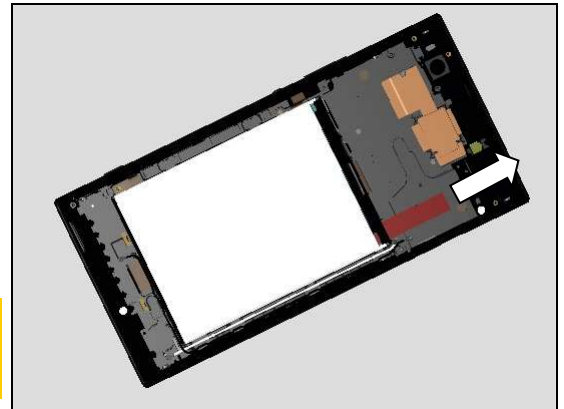
4.14 Battery and Adhesive

Battery Left & Right

4.14.1 Adhesive Battery Left & Right

Pick up the tab of the Adhesive Battery Right and slowly pull out the Adhesive Battery Right horizontally as shown in picture.

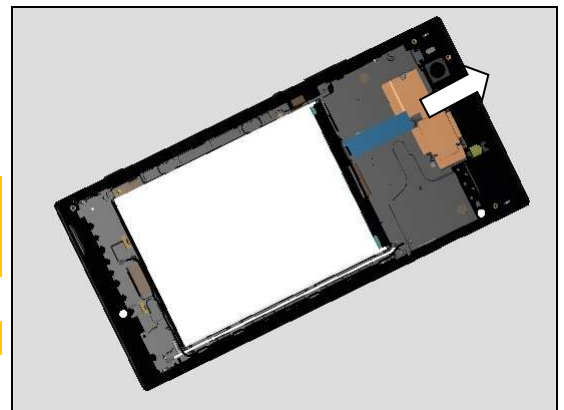
Even the Adhesive Battery Right breaks from the middle, as long as there is remains outside, continue to pull from the break part until its fully pull out.



Do the same for Adhesive Battery Left horizontally as shown in picture.

Even the Adhesive Battery left breaks from the middle, as long as there is remains outside, continue to pull from the break part until its fully pull out.

Scrap! Adhesive Battery Left & Right cannot be reused!

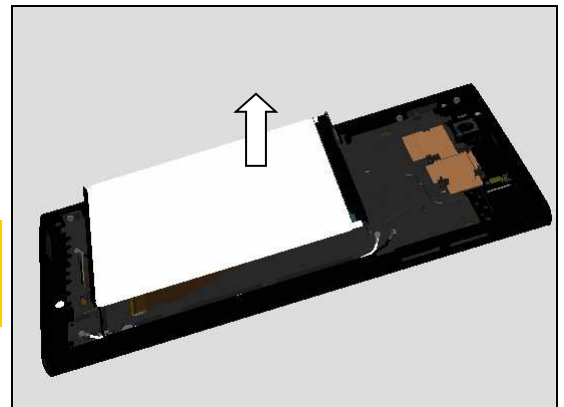


4.14.2 Battery

Remove the Battery carefully.

Note!

Follow Chapter 6. Battery Reuse Instruction before installing the battery.

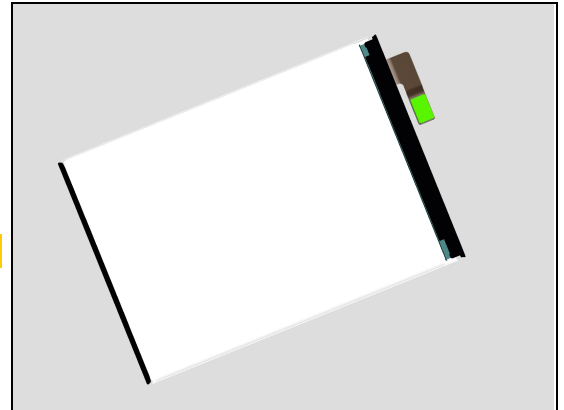


Disassembly

4.14.3 Sponge Battery BtB

Detach to remove the Sponge Battery BtB gently.

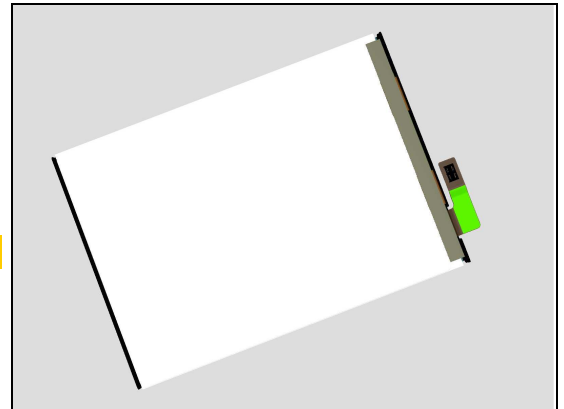
Be carefully with Battery FPC.



4.14.4 Mylar Battery FPC

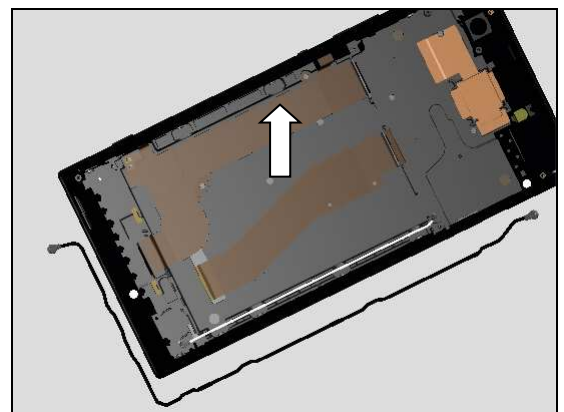
Detach to remove the Mylar Battery FPC gently.

Be careful with Battery FPC.



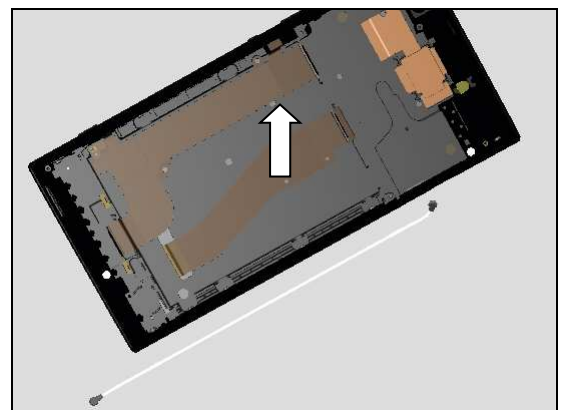
4.15 RF Cable Black

Release and remove the RF Cable Black from the cavity and snap clip carefully.



4.16 RF Cable White

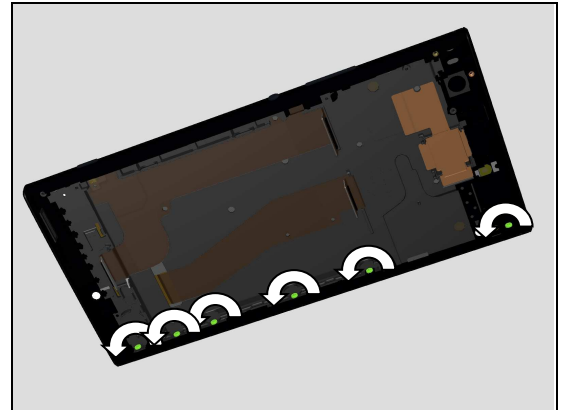
Release and remove the RF Cable White from the cavity and snap clip carefully.



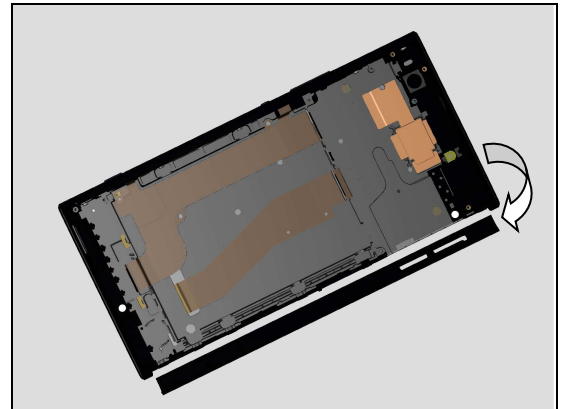
Disassembly

4.17 Side Panel Cap

Remove the six Screw T5 by using a T5 screwdriver.



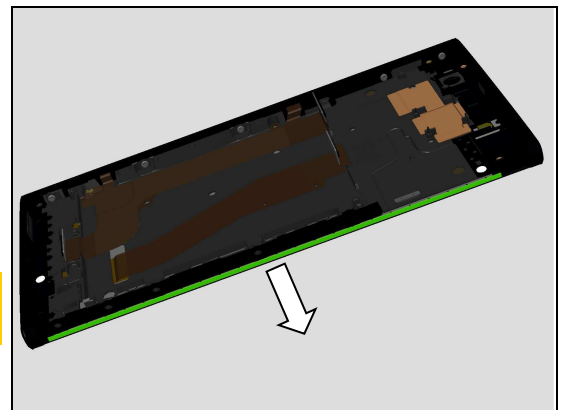
Rotate the Side Panel Cap as shown to detach and remove the Side Panel Cap from adhesive underneath.



4.18 Sponge Front Assy Cap Side

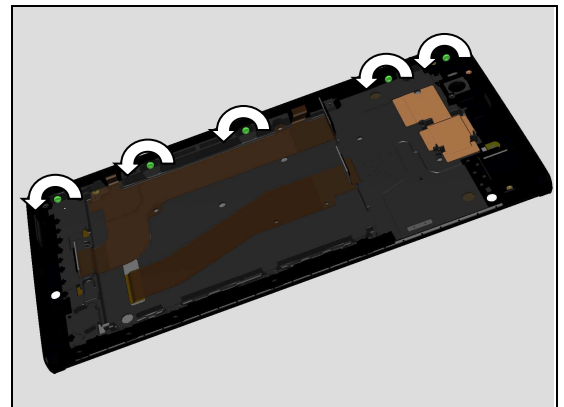
Detach to remove the Sponge Front Assy Cap Side carefully.

***Make sure all remaining residue have been removed!
Scrap! Cannot be reused!***



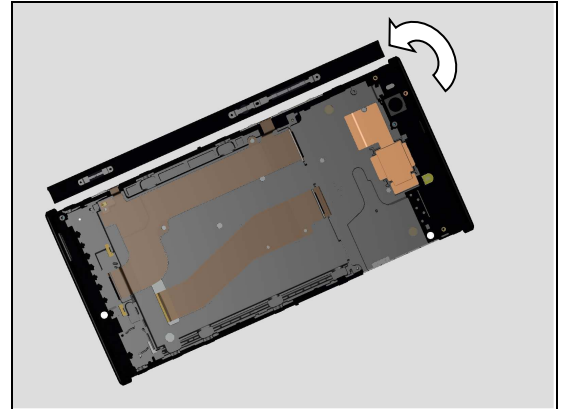
4.19 Side Panel Keys Assy

Remove the five Screw T5 by T5 screwdriver.



Disassembly

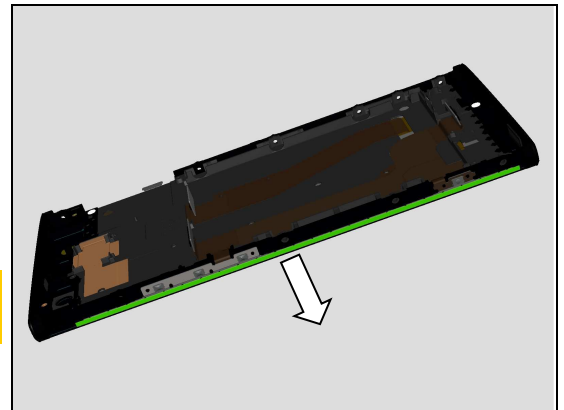
Rotate the Side Panel Keys Assy as shown to detach and remove the Side Panel Keys Assy from adhesive underneath.



4.20 Sponge Front Assy Key Side

Detach to remove the Sponge Front Assy Key Side carefully.

**Make sure all remaining residue have been removed!
Scrap! Cannot be reused!**

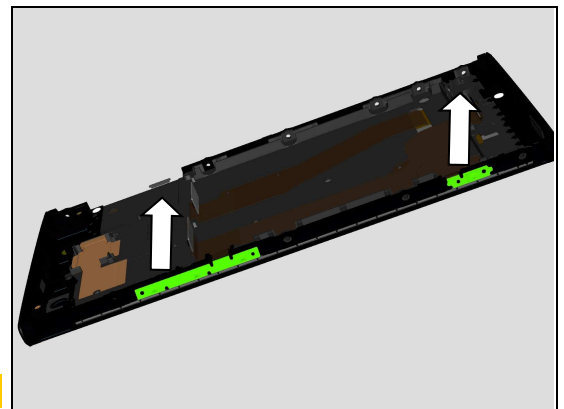


4.21 Side Key FPC Assy

4.21.1 Adhesive Side Key FPC Volume Key and Adhesive Side Key FPC Camera Key

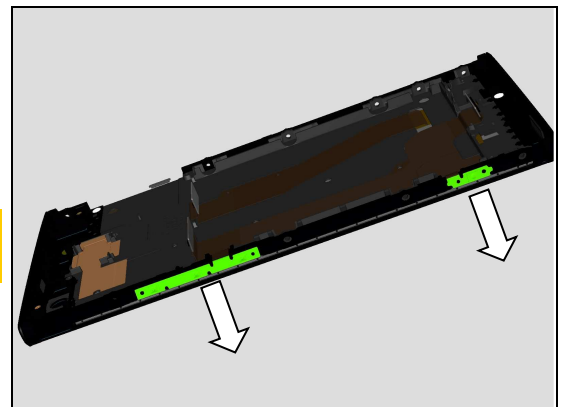
Detach the Power & Volume switch FPC and Camera switch FPC by tweezers.

Be careful not to damage the FPC!



Remove the Adhesive Side Key FPC Volume Key and Adhesive Side Key FPC Camera Key carefully.

**Make sure all remaining residue have been removed!
Scrap! Cannot be reused!**

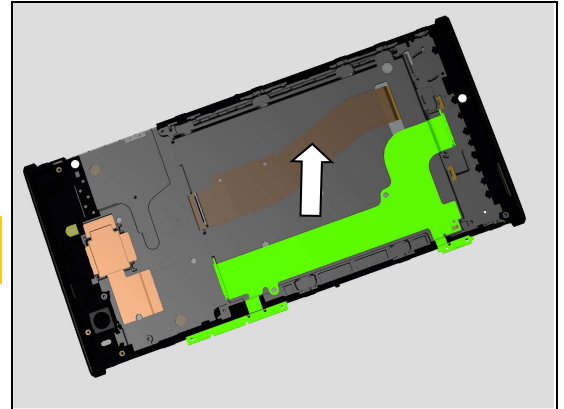


Disassembly

4.21.2 Side Key FPC

Detach to remove the Side Key FPC.

Inspect the Side Key FPC Assy to make sure no cosmetic damage!

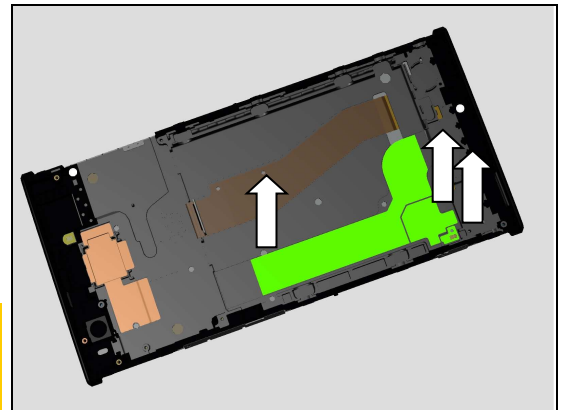


4.21.3 Adhesive Side Key FPC Main, Adhesive Side Key FPC B and Adhesive Side Key FPC C

Detach to remove the Adhesive Side Key FPC Main, Adhesive Side Key FPC B and Adhesive Side Key FPC C on both sides of Side Key FPC and Front Cover Assy.

Scrap! Not to be reused!

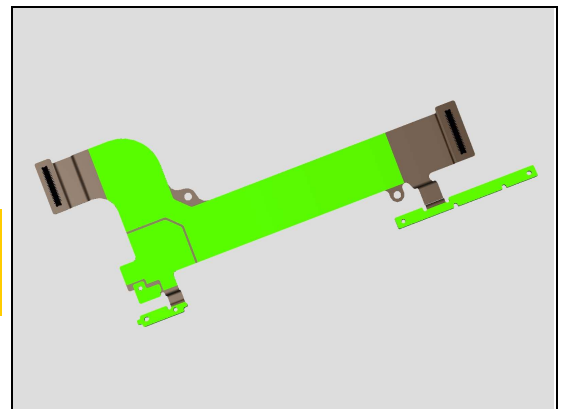
Make sure all remaining adhesive residue have been removed!



Detach to remove the Adhesive Side Key FPC Main, Adhesive Side Key FPC B and Adhesive Side Key FPC C on both sides of Side Key FPC and Front Cover Assy.

Scrap! Not to be reused!

Make sure all remaining adhesive residue have been removed!

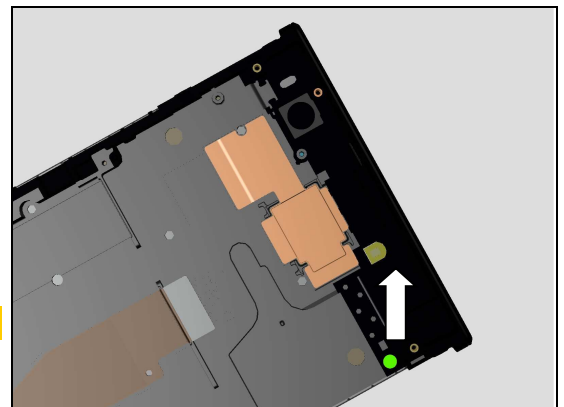


4.22 Front Cover Assy

4.22.1 Water Intrusion Label

Detach and remove the Water Intrusion Label by using the plastic tweezers.

Scrap! Not to be reused!

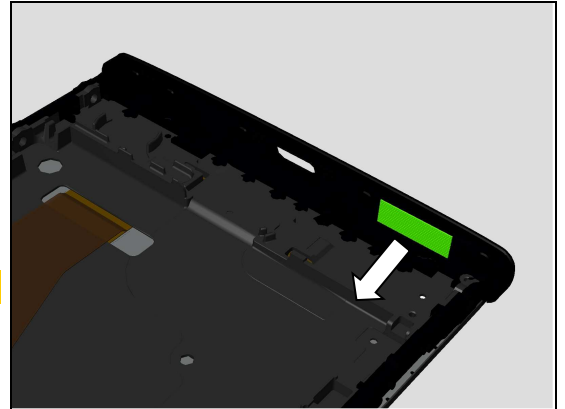


Disassembly

4.22.2 Speaker Mesh

Detach and remove the Speaker Mesh by using the plastic tweezers.

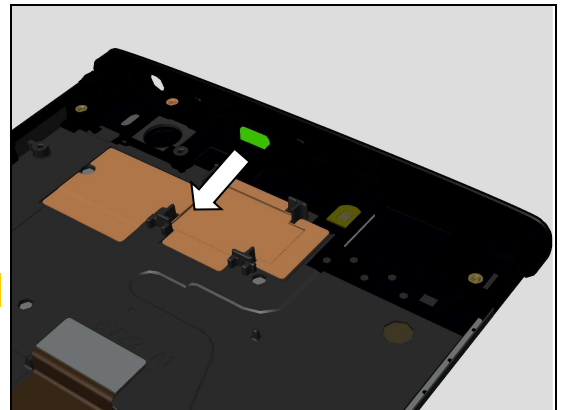
Scrap! Not to be reused!



4.22.3 2nd Mic Mesh

Detach and remove the 2nd Mic Mesh by using the plastic tweezers.

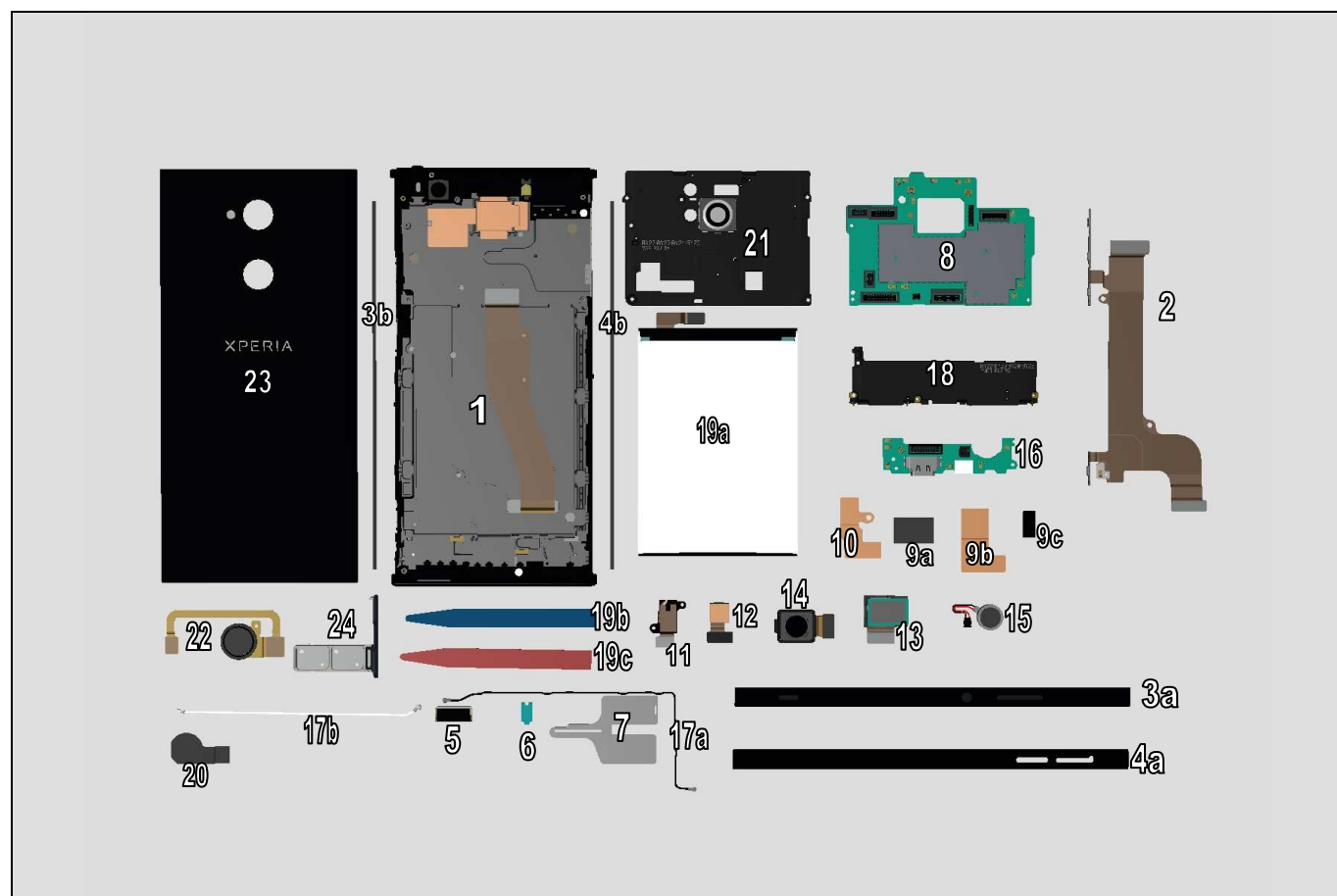
Scrap! Not to be reused!



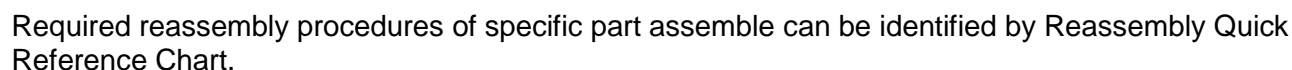
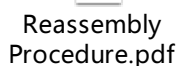
5 Reassembly

The Reassembly is done in the following order:

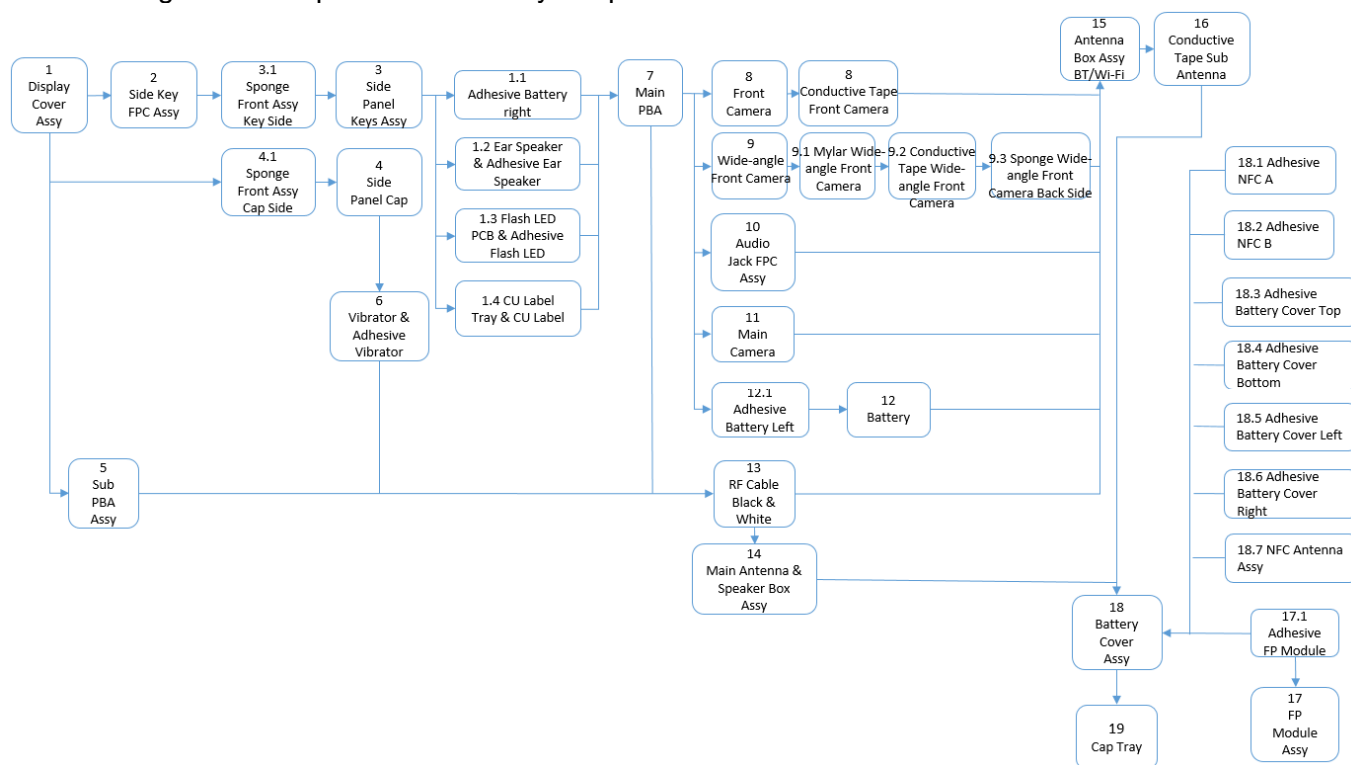
1. Front Cover Assy
2. Side Key FPC Assy
3. Side Panel Keys Assy (a) & Sponge Front Assy Key Side
4. Side Panel Cap (a) & Sponge Front Assy Cap Side (b)
5. Ear Speaker
6. Front Flash LED PCB
7. CU Label Tray
8. Main PBA
9. Sponge Wide-angle Front Camera Back Side (a) & Conductive Tape Wide-angle Front Camera (b) & Mylar Wide-angle Front Camera (c)
10. Conductive Tape Front Camera
11. Audio Jack FPC
12. Front Camera
13. Wide-angle Front Camera
14. Main Camera
15. Vibrator
16. Sub PBA
17. RF Cable Black (a) & RF Cable White (b)
18. Main Antenna & Speaker Box Assy
19. Battery (a) & Adhesive Battery Left (b) & Adhesive Battery right (c)
20. Conductive Tape Sub Antenna
21. Antenna Box Assy BT/Wi-Fi
22. FP Module Assy
23. Battery Cover Assy
24. Cap Tray



Reassembly Quick Reference Chart is embedded.



The following is the sample how to identify the procedures.

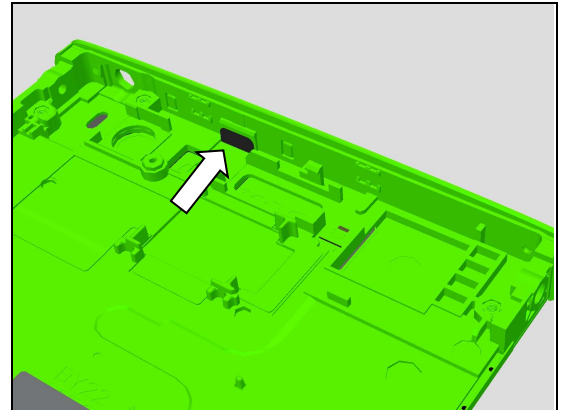


Reassembly

5.1 Front Cover Assy

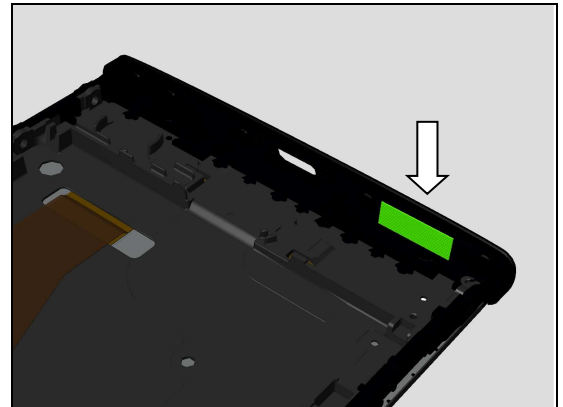
5.1.1 2nd Mic Mesh

Attach a new 2nd Mic Mesh into its stage as shown in picture.



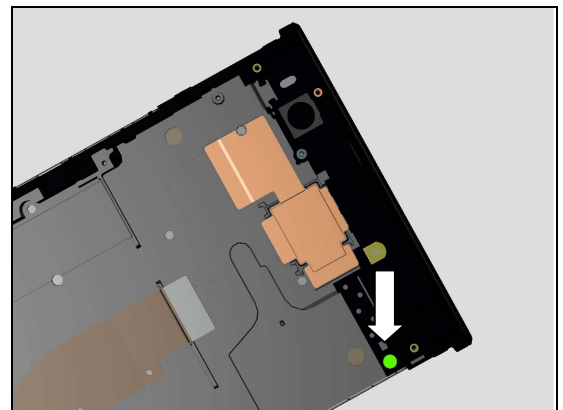
5.1.2 Speaker Mesh

Attach a new Speaker Mesh onto its proper position as shown in picture.



5.1.3 Water Intrusion Label

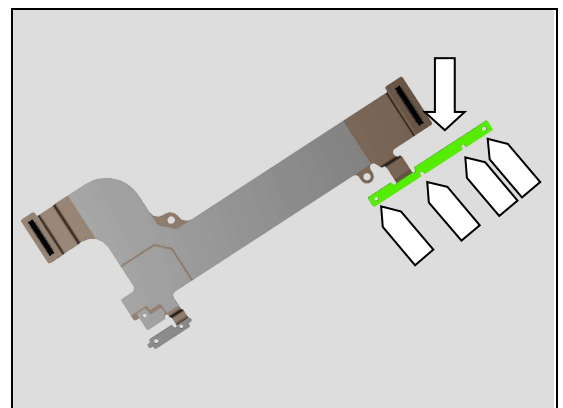
Attach a new Water Intrusion Label onto its proper position as shown in picture.



5.2 Side Key FPC Assy

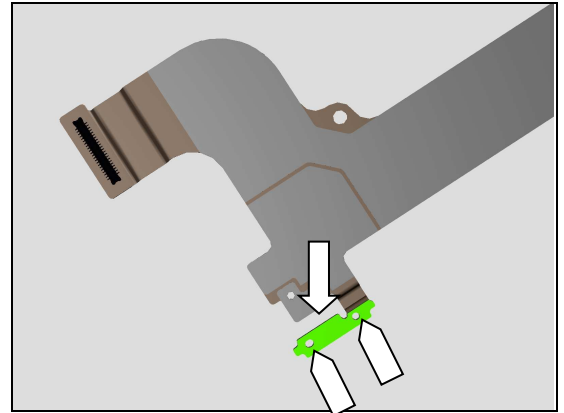
5.2.1 Adhesive Side Key FPC Volume Key and Adhesive Side Key FPC Camera Key

Attach a new Adhesive Side Key FPC Volume Key with alignment to the two guiding poles and pin holes as shown in picture.



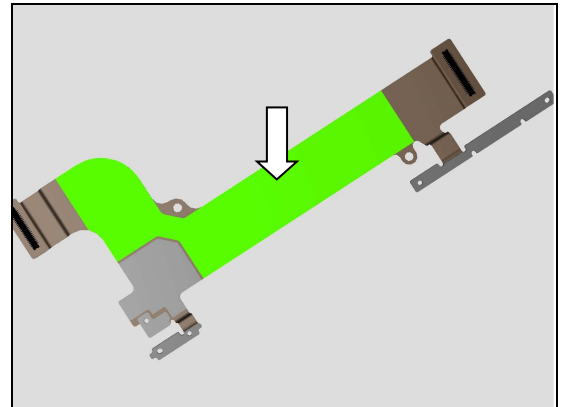
Reassembly

Attach a new Adhesive Camera Key FPC by using two guiding holes as shown in picture.

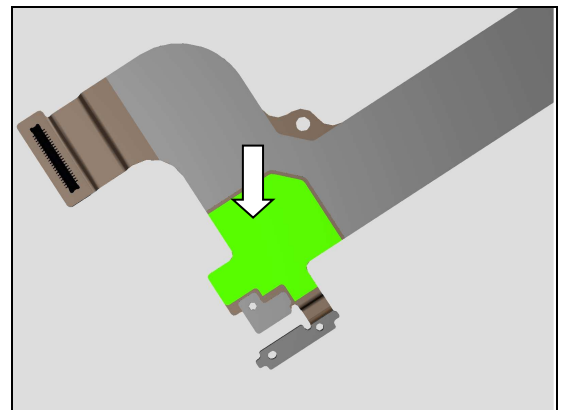


5.2.2 Adhesive Side Key FPC Main, Adhesive Side Key FPC B and Adhesive Side Key FPC C

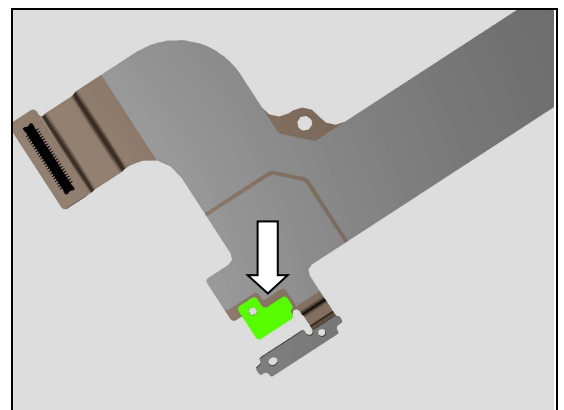
Attach a new Adhesive Side Key FPC Main onto its proper position as shown in picture.



Attach a new Adhesive Side Key FPC B onto its proper position as shown in picture.



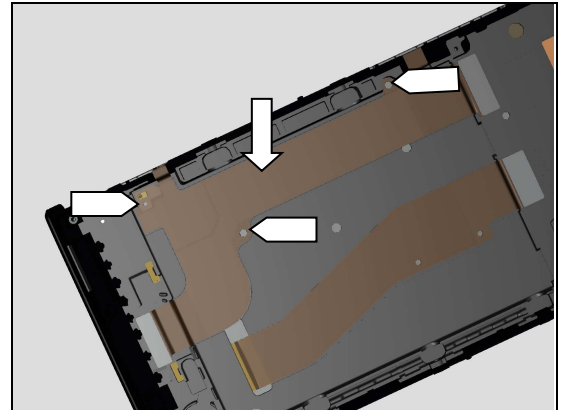
Attach a new Adhesive Side Key FPC C onto its proper position as shown in picture.



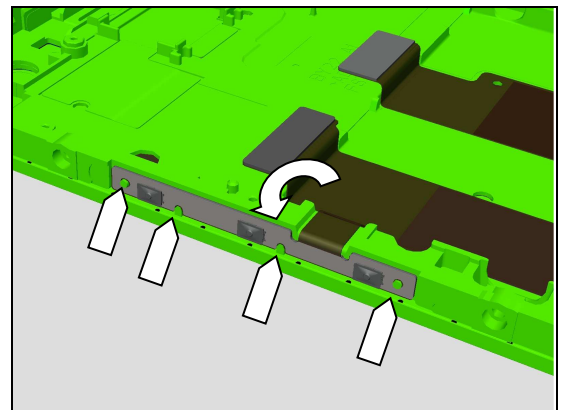
Reassembly

5.2.3 Side Key FPC Assy

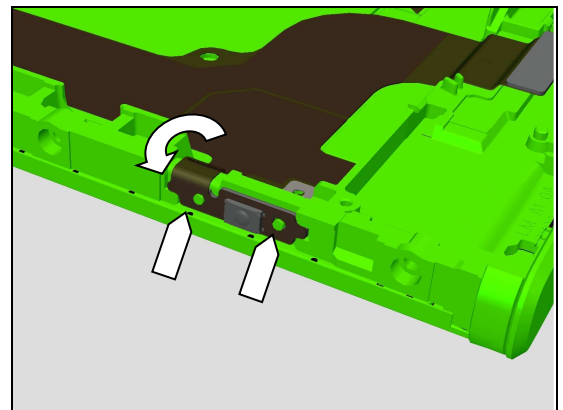
Attach the Side Key FPC Assy with alignment of the guiding lines as shown in the picture.



Attach the Adhesive Side Key FPC Volume Key with alignment of the guiding pins as shown in the picture.

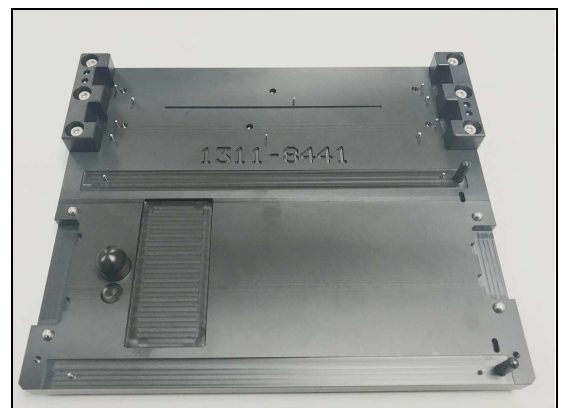


Attach the Adhesive Side Key FPC Camera Key with alignment of the guiding pins as shown in the picture.



5.3 Sponge Front Assy Key Side & Sponge Front Assy Cap Side

Prepare Panels Adhesive Fixture (1311-8441) in place.

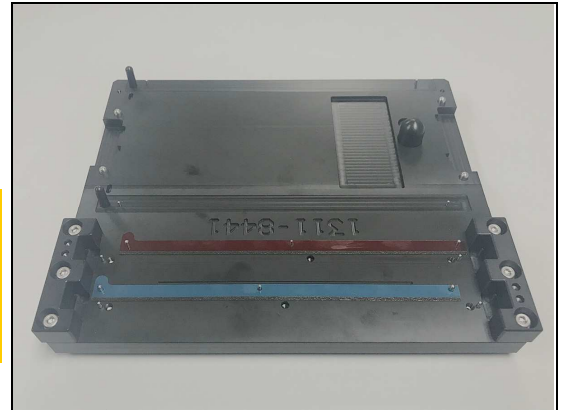


Reassembly

Place a new Sponge Front Assy Key Side & Sponge Front Assy Cap Side with protection film onto the Panels Adhesive Fixture in alignment with the position pins as shown in picture.

Choose the correct for position of Sponge Front Assy Key and Sponge Front Assy Cap Side as shown in picture.

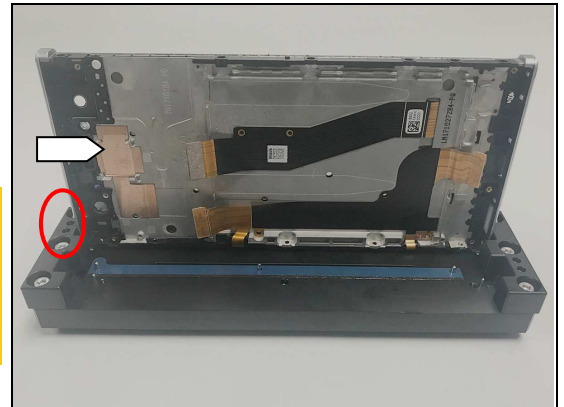
Note the correct orientation to be installed as shown in picture!



Insert the Front Cover Assy onto the Panels Adhesive Fixture in alignment with the position pins as shown in picture and press to make the Sponge Front Assy Key Side securely attached.

Note the correct orientation to be installed as shown in picture!

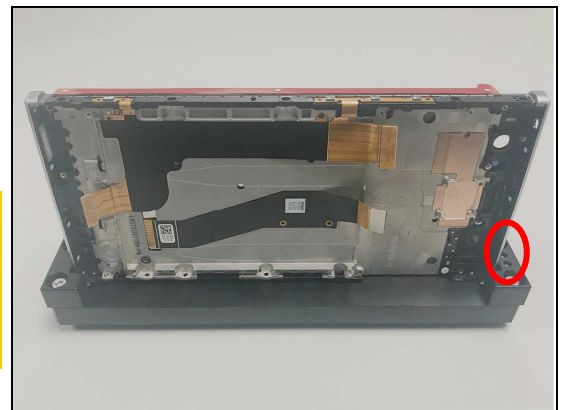
Use “two dots” mark on the fixture matches the “Sony” Logo on the head of the Unit—’ to identify the correct orientation.



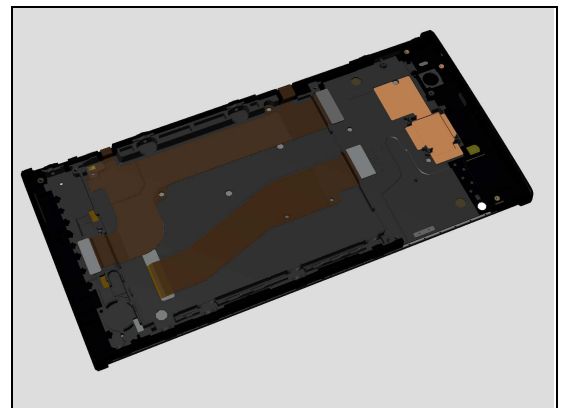
Insert the Front Cover Assy onto the Panels Adhesive Fixture in alignment with the position pins as shown in picture and press to make the Sponge Front Assy Cap Side securely attached.

Note the correct orientation to be installed as shown in picture!

Use “two dots” mark on the fixture matches the “Sony” Logo on the head of the Unit—’ to identify the correct orientation.



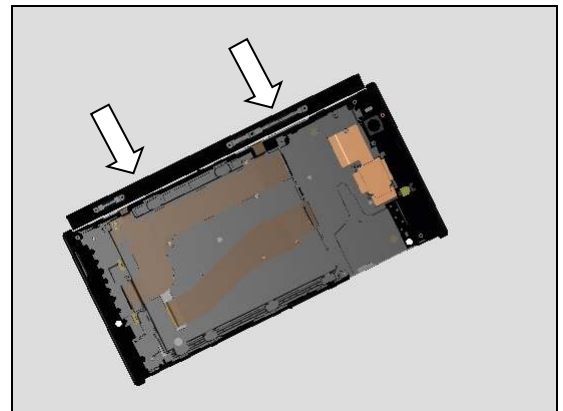
Remove the Unit from the fixture.



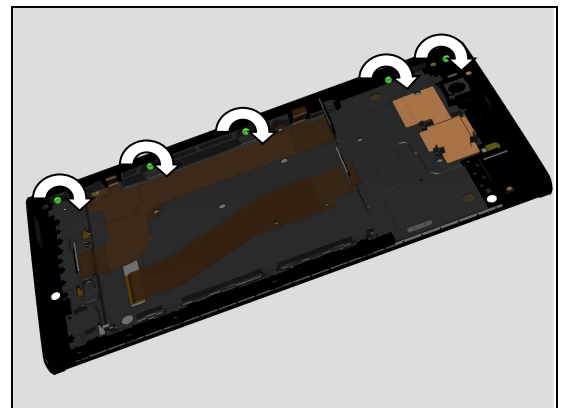
Reassembly

5.4 Side Panel Keys Assy

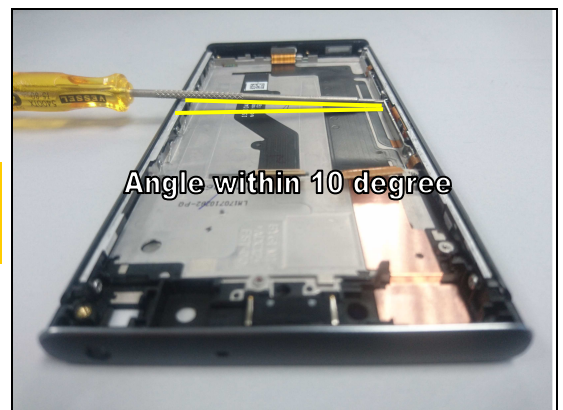
Snap the Side Panel Keys Assy on the side of the Unit by as shown in the picture



Tighten the five Screw T5 with T5 Screwdriver.

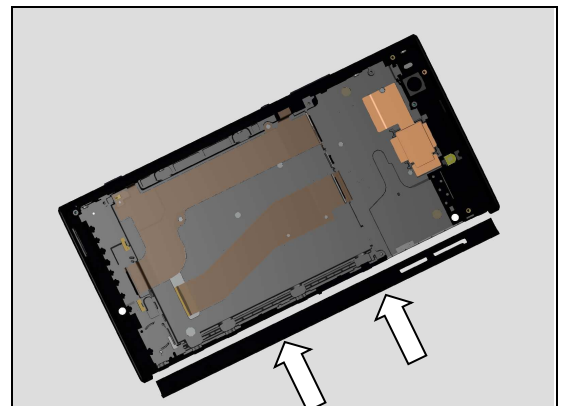


Make sure to secure the angle between Screwdriver bit and front cover within 10 degree when tightening the screws.



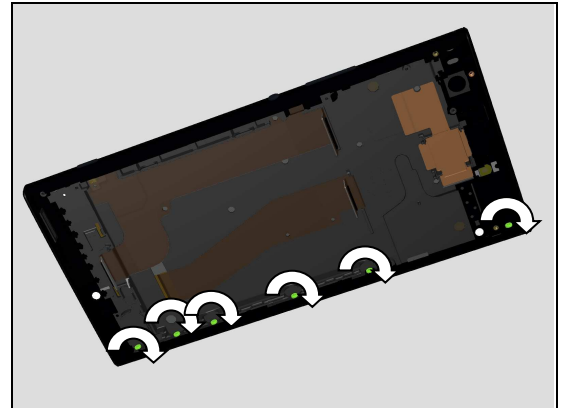
5.5 Side Panel Cap

Snap the Side Panel Cap on the side of the Unit as shown in the picture.

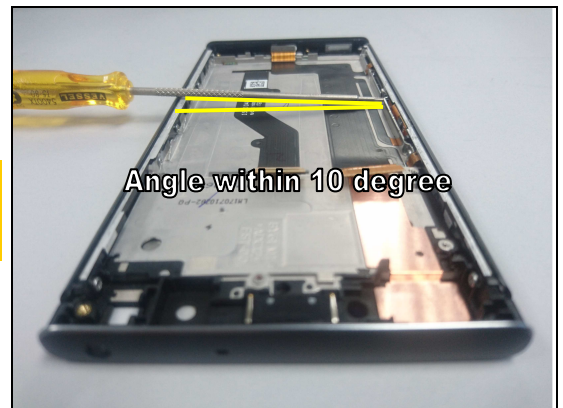


Reassembly

Tighten the six Screw T5 with T5 Screwdriver.



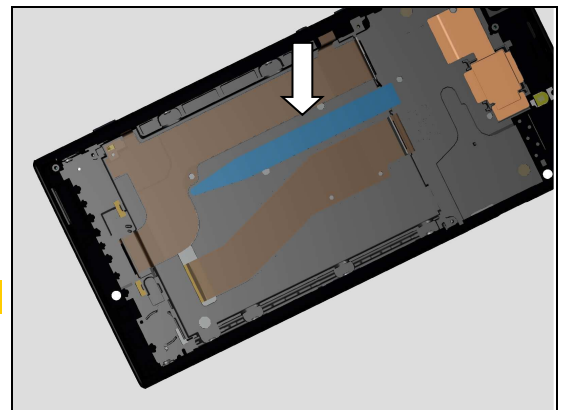
Make sure to secure the angle between Screwdriver bit and front cover within 10 degree when tightening the screws.



5.6 Adhesive Battery Left

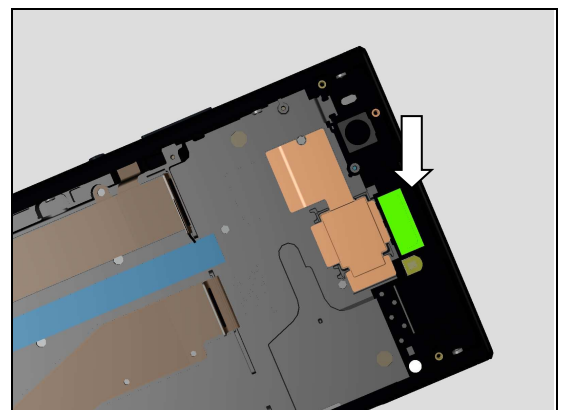
Attach a new Adhesive Battery Left with alignment of the guiding line on the Front Cover Assy as shown in picture.

Do not attach the Adhesive Battery onto the FPC.



5.7 Adhesive Ear Speaker and Ear Speaker

Prepare a new Adhesive Ear Speaker and attach it into cavity properly as shown in picture.

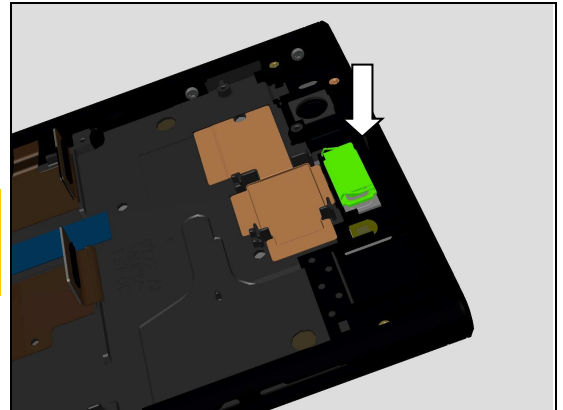


Reassembly

Prepare a new Ear Speaker and press into the cavity with correct direction.

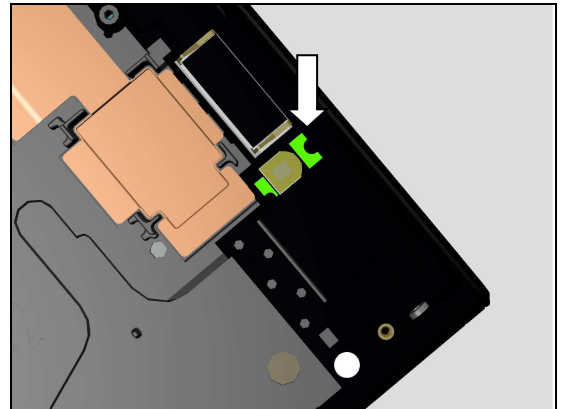
Note the correct orientation of the Ear Speaker contact springs to be installed as shown in picture!

Be careful! Do not press contact springs when pressing.

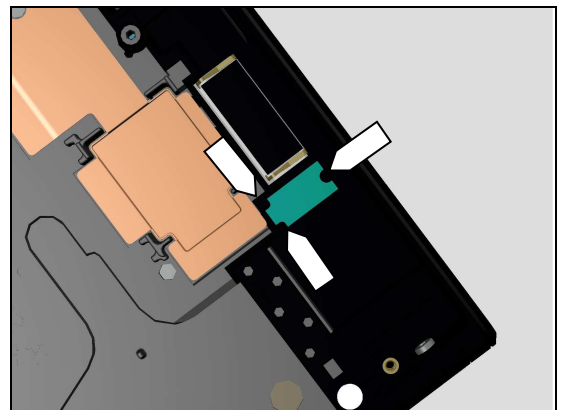


5.8 Adhesive Front LED PCB & Front Flash LED PCB

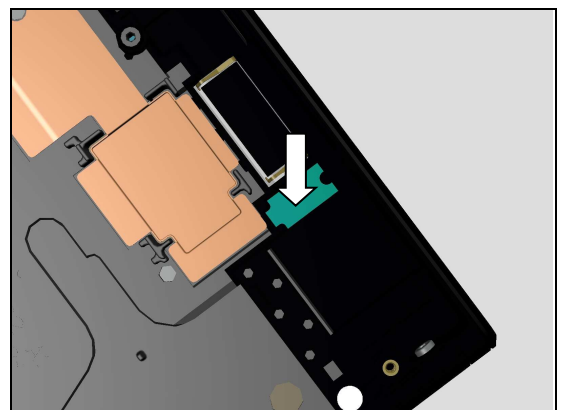
Prepare a new Adhesive Front LED PCB and attach it into cavity properly as shown in picture.



Prepare the Front Flash LED PCB and place it with alignment of the guiding pole as shown.



Press to make it securely attached.



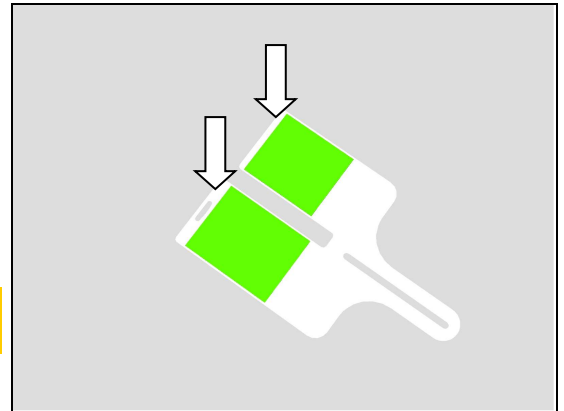
Reassembly

5.9 CU Label Tray

5.9.1 CU Label

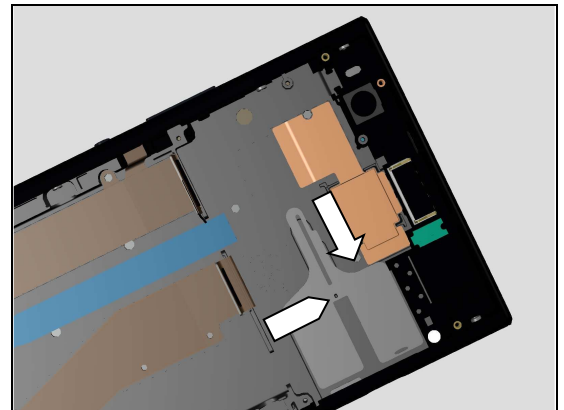
Attach a new CU Label onto its proper position as shown in picture.

Note! New CU Label have to be replaced only when board swap.



5.9.2 CU Label Tray

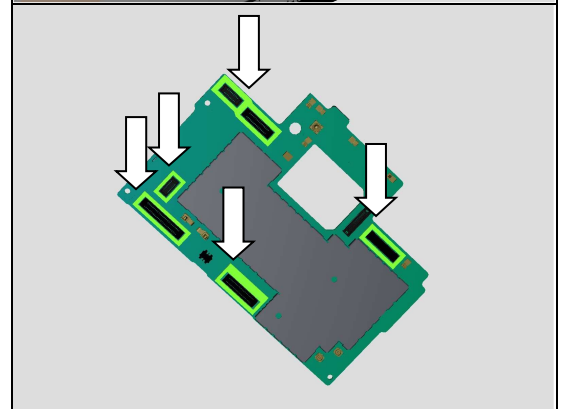
Place the CU Label Tray on its proper position as shown in picture.



5.10 Main PBA

5.10.1 Gasket BtB Audio Jack, Gasket BtB Display FPC, Gasket BtB FP Module, Gasket BtB Wide-angle Front Camera & Gasket BtB Side Key FPC

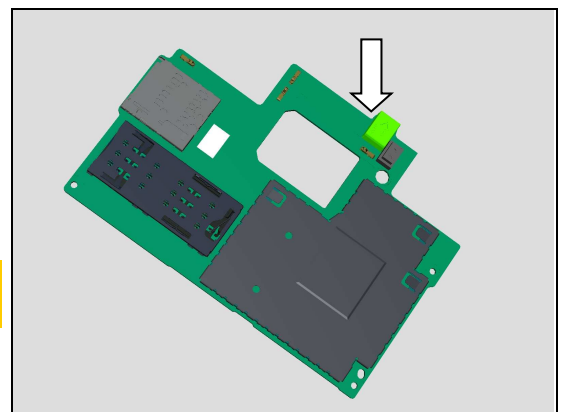
Attach new Gasket BTB onto their proper position as shown in picture.



5.10.2 2nd Mic Rubber

Attach a new 2nd Mic Rubber onto its proper position as shown in picture.

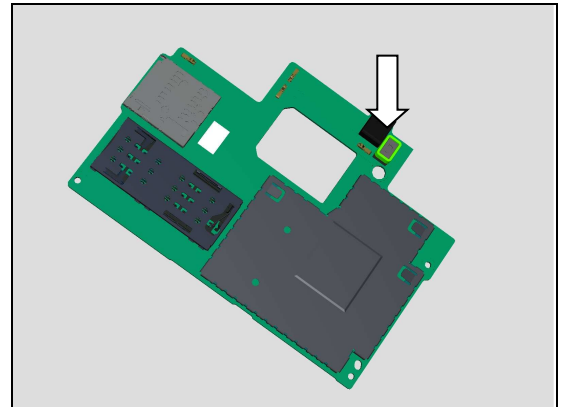
Note the correct orientation of the 2nd Mic Rubber to be installed as shown in picture!



Reassembly

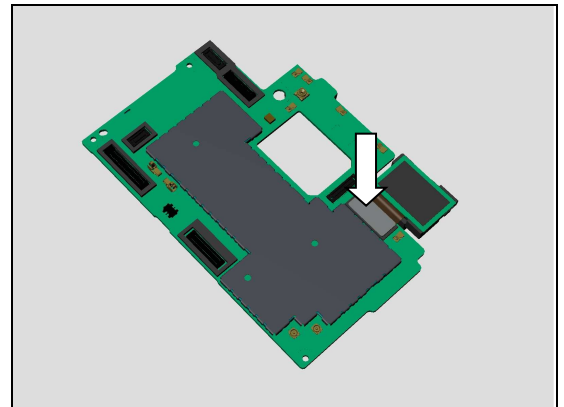
5.10.3 P-Sensor Rubber

Place the P- Sensor Rubber as shown in picture.



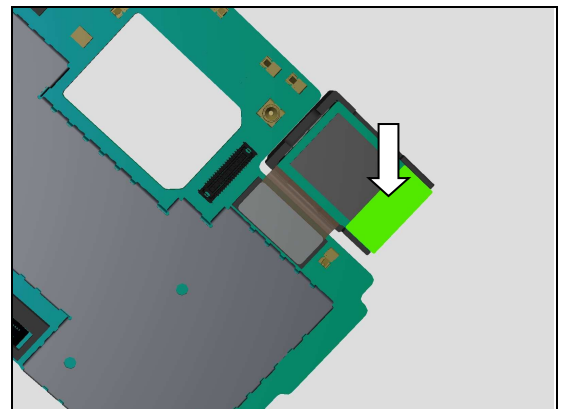
5.10.4 Wide-angle Front Camera

Prepare the Wide-angle Front Camera in place and press to snap the Wide-angle Front Camera connector.



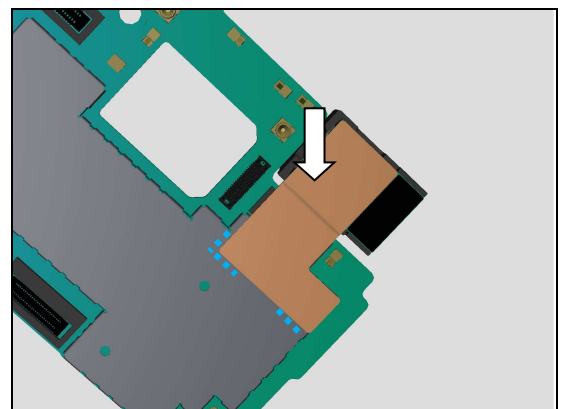
5.10.5 Mylar Wide-angle Front Camera

Attach a new Mylar Wide-angle Front Camera in alignment with edge of the Wide-angle Front Camera as shown.



5.10.6 Conductive Tape Wide-angle Front Camera

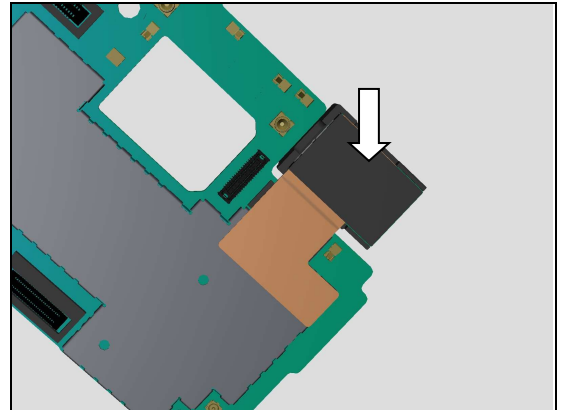
Attach a new Conductive Tape Wide-angle Front Camera in alignment with the guiding lines on the shielding can lid and Wide-angle Front Camera outline as shown.



Reassembly

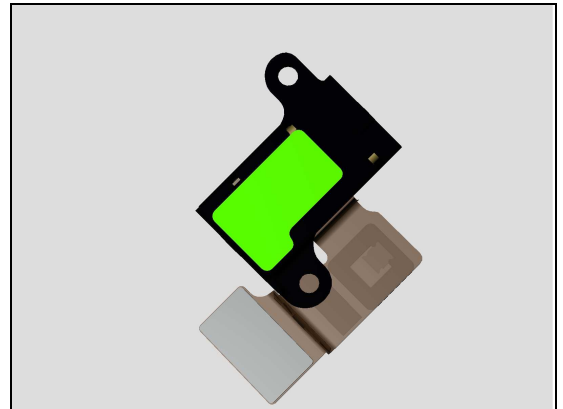
5.10.7 Sponge Wide-angle Front Camera Back Side

Attach a new Sponge Wide-angle Front Camera Back Side in alignment with edge of the Wide-angle Front Camera as shown.

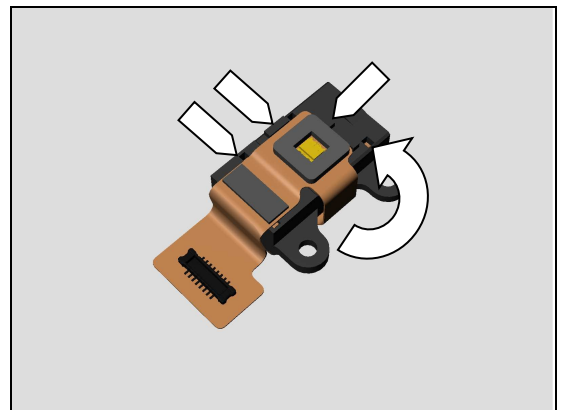


5.10.8 Adhesive Audio Jack

In case replace a new Audio Jack FPC Assy, firstly attach a new Adhesive Audio Jack and press to make it securely attached.

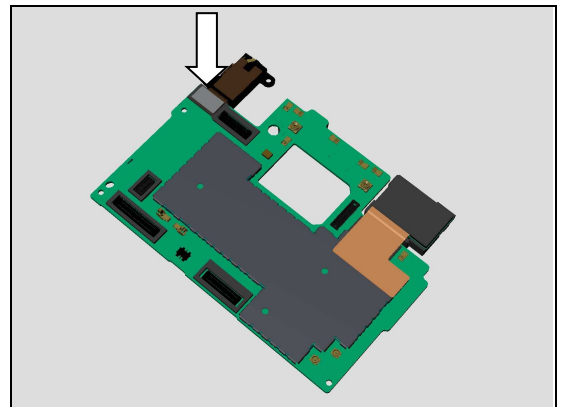


Fold and attach the FPC onto its proper position as shown in picture.



5.10.9 Audio Jack FPC

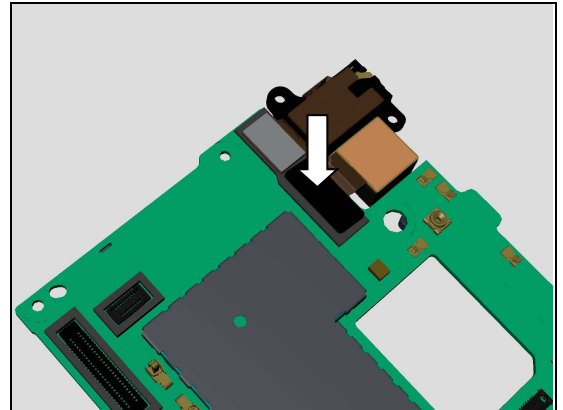
Prepare the Audio Jack FPC in place and press to snap the Audio Jack FPC connector.



Reassembly

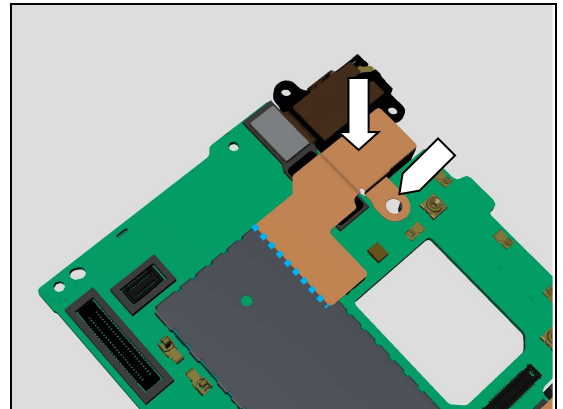
5.10.10 Front Camera

Prepare the Front Camera in place and press to snap the Front Camera connector.



5.10.11 Conductive Tape Front Camera

Attach a new Conductive Tape Front Camera in alignment with guiding lines on the shielding can lid and screw hole.



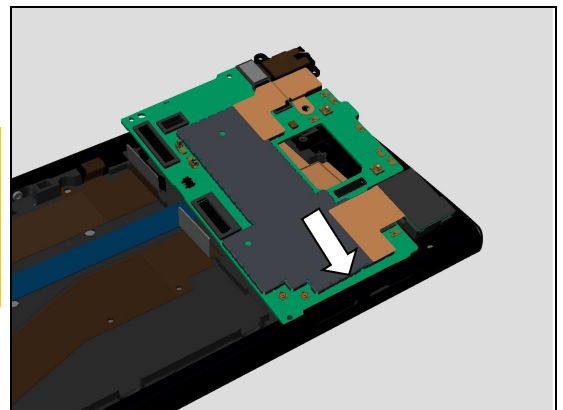
5.10.12 Main PBA

Note!

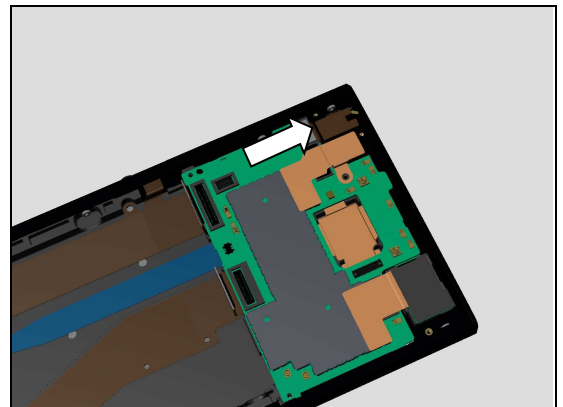
Clean the Main PBA cavity by using with air blower or ionized air blower.

Make sure no foreign materials in the main PBA cavity of the unit.

Align the Main PBA with SIM/SD hole as shown in picture.

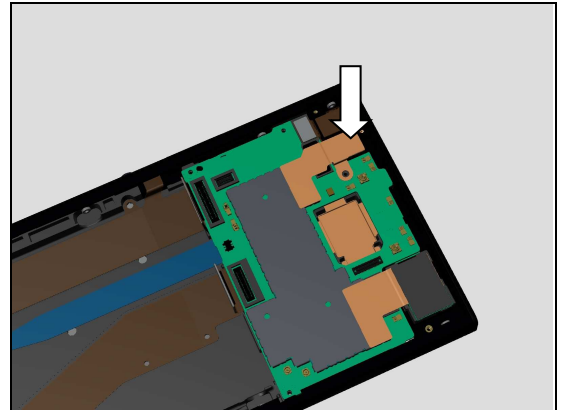


Press to insert the Audio Jack head into the hole.



Reassembly

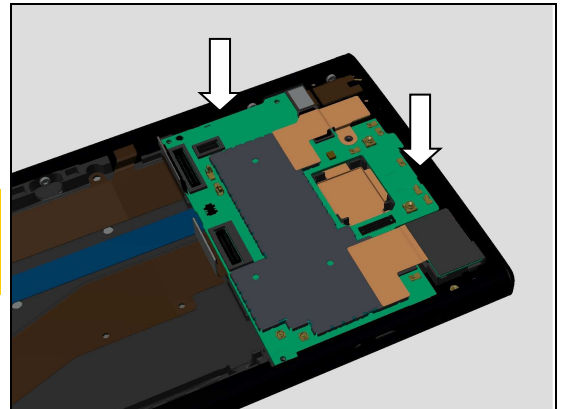
Press to secure the Front Camera Lens into the cavity as shown in picture.



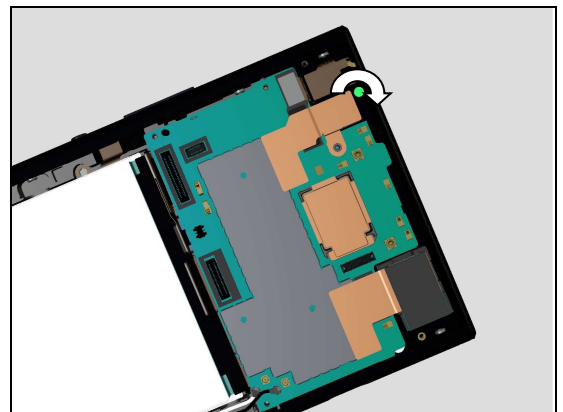
Press to snap the Main PBA.

Be careful of not to touch Spring Pins on the edges of Main PBA!

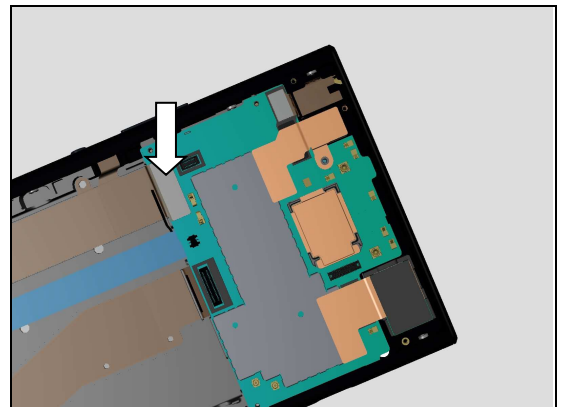
Be careful of all BtB connector position!



Apply 6Ncm torque when tightening the Screw Cross with Bits JCIS No.0.

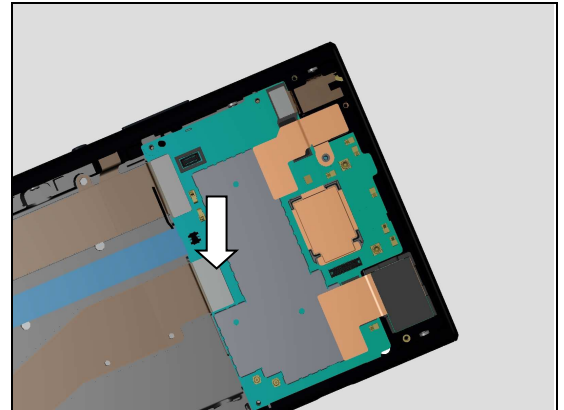


Press to snap the BtB connector of Side Key FPC Assy.



Reassembly

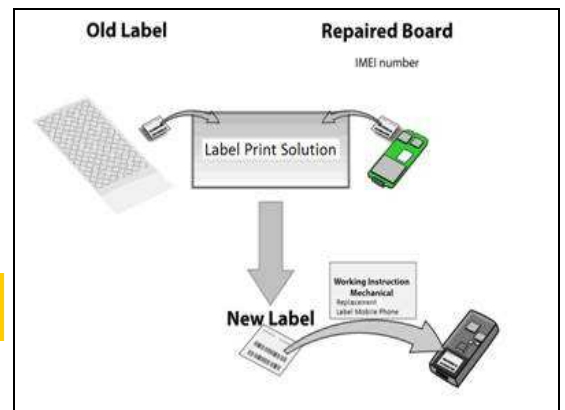
Press to snap the BtB connector of the Display.



BOARD SWAP – CHANGE LABEL

Follow the instructions in the Generic Repair Manual – Build swap for change of label.

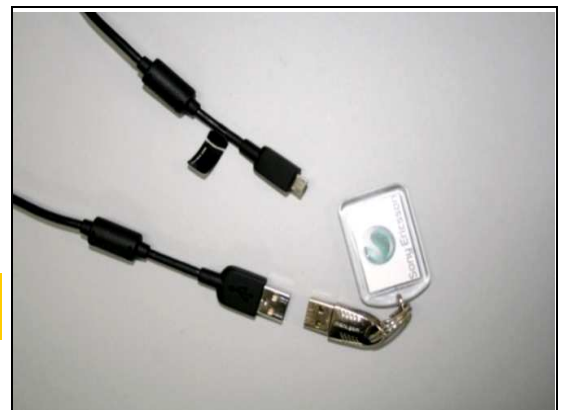
Note! CU Label have to be replaced only when board swap.



Board Swap – Customize of Software

Follow the instructions in the Generic Repair Manual – Build swap for customization of the software.

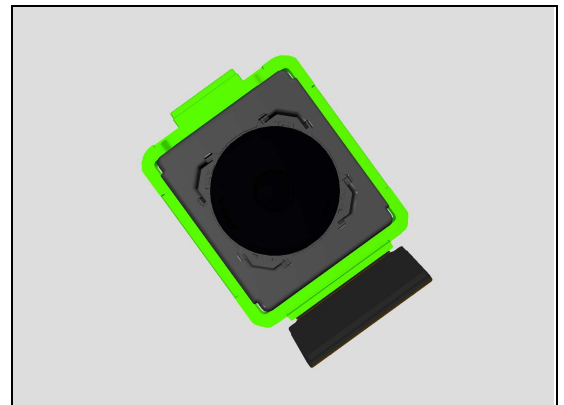
Note! Customize of Software have to be performed only when board swap.



5.11 Main Camera

5.11.1 Rubber Main Camera

In case replace a new Main Camera, assemble the Rubber Main Camera onto its proper position as shown in picture.

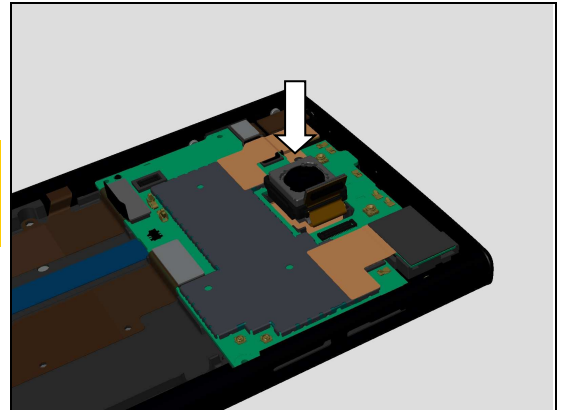


Reassembly

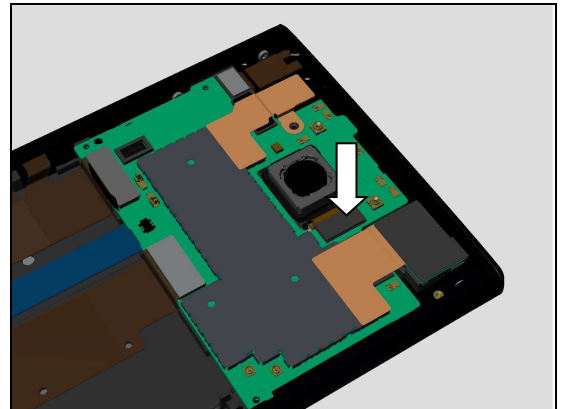
5.11.2 Main Camera

*Inspect the Main Camera cavity on the Front Cover Assy. to check foreign material before assembly.
Use Air Blow to remove foreign material if needed.*

Place the Main Camera into its cavity.



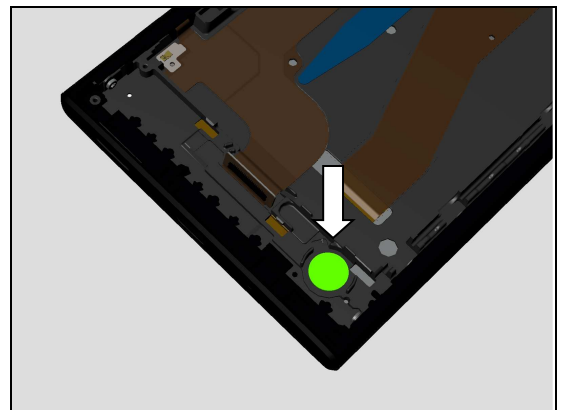
Press to snap the BtB connector of the Main Camera.



5.12 Vibrator

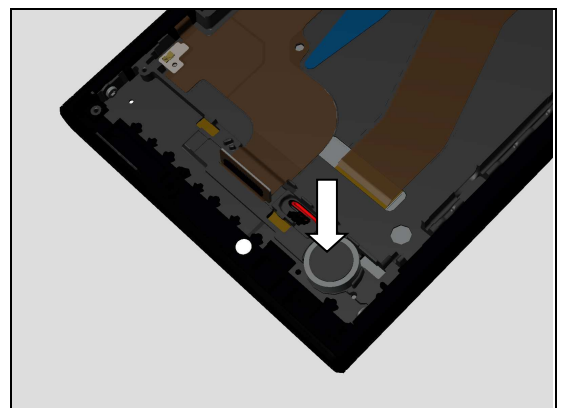
5.12.1 Adhesive Vibrator

Attach a new Adhesive Vibrator into the cavity as shown in picture.



5.12.2 Vibrator

Prepare the Vibrator in place and press it into the cavity with proper direction as shown in picture.

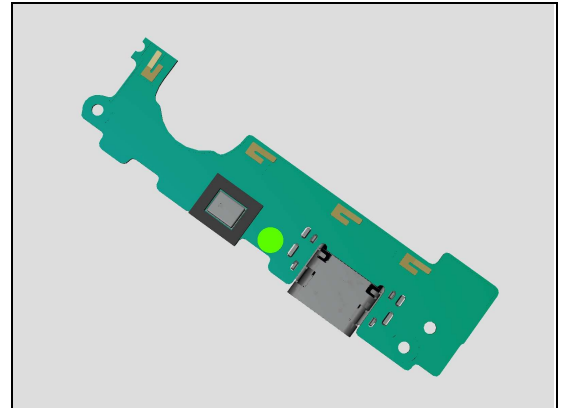


Reassembly

5.13 Sub PBA

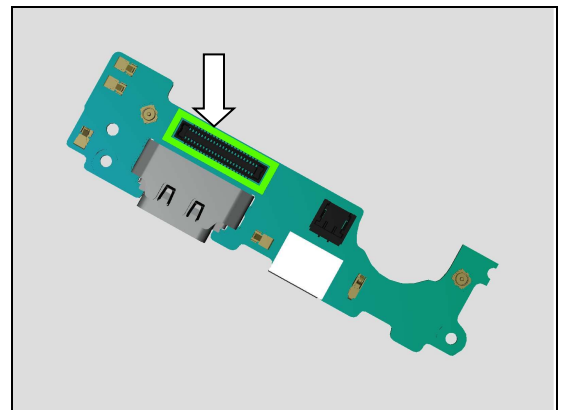
5.13.1 Water Intrusion Label

Attach a new Water Intrusion Label in its proper position as shown in picture.



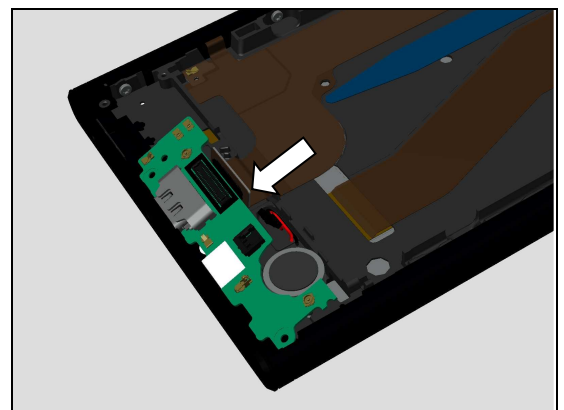
5.13.2 Gasket BTB Sub PBA

Attach a new Gasket BTB Sub PBA in its proper position as shown in picture.

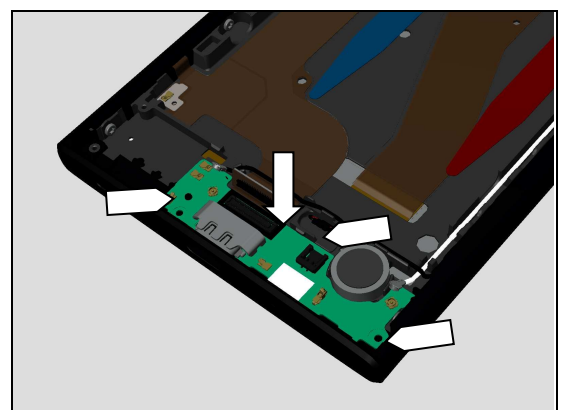


5.13.3 Sub PBA

Insert the Sub PBA into USB hole as shown in picture.

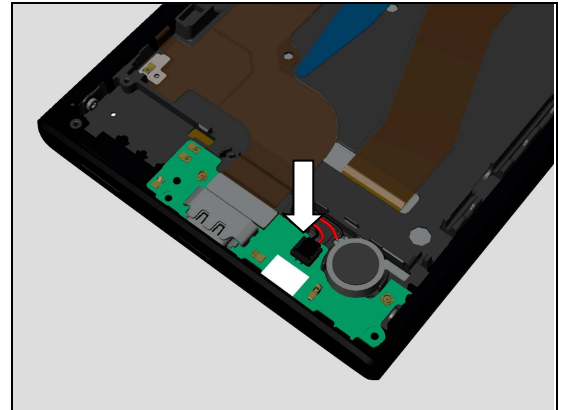


Press to snap the Sub PBA Assy into its proper position as shown in picture.

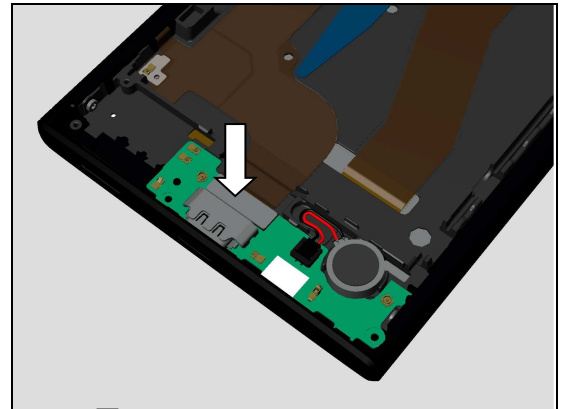


Reassembly

Press to snap the connector of the Vibrator.

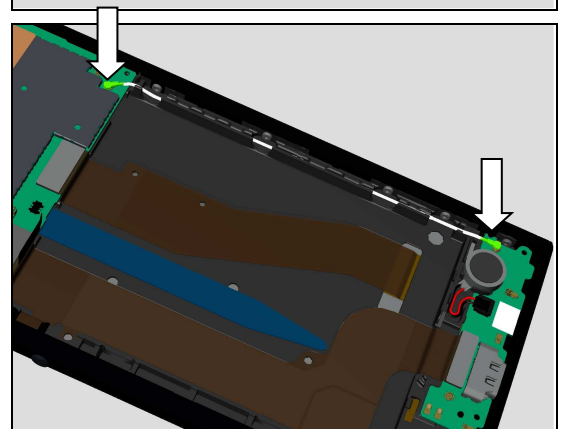


Press to snap the BtB connector of the Side Key FPC.

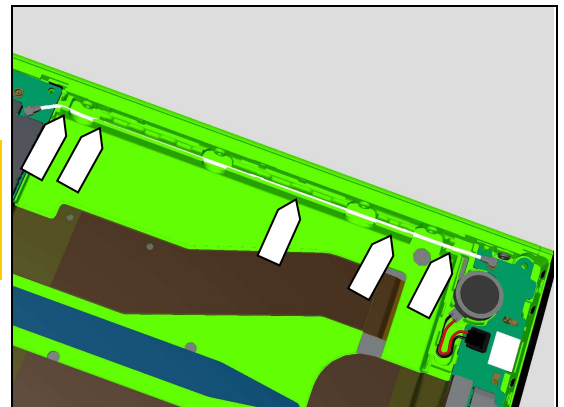


5.14 RF Cable White

Place the RF Cable White in place and press to snap the RF Cable White connectors.



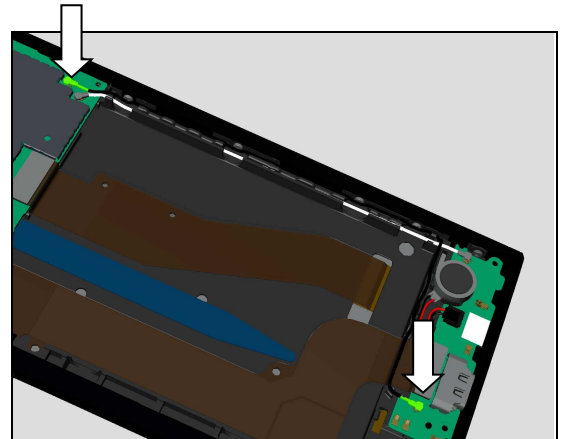
Make sure the RF Cable White is well inserted into its cavity as shown in picture.
Make sure the three metal rings contact to the front cover.



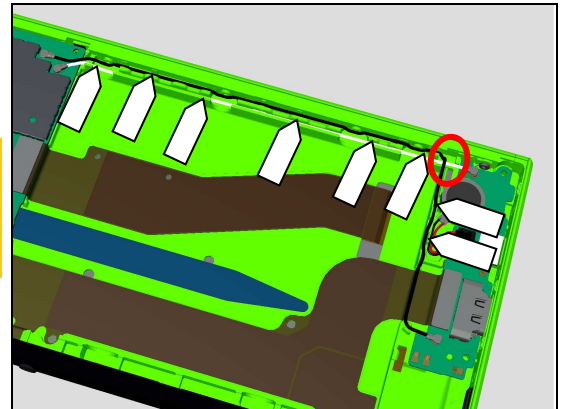
Reassembly

5.15 RF Cable Black

Place the RF Cable Black in place and press to snap the RF Cable Black connectors.



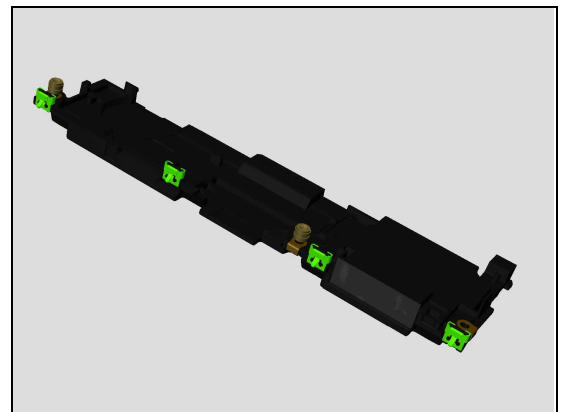
Make sure the RF Cable Black is well inserted into its cavity as shown in picture.
Make sure the three metal rings contact to the front cover.



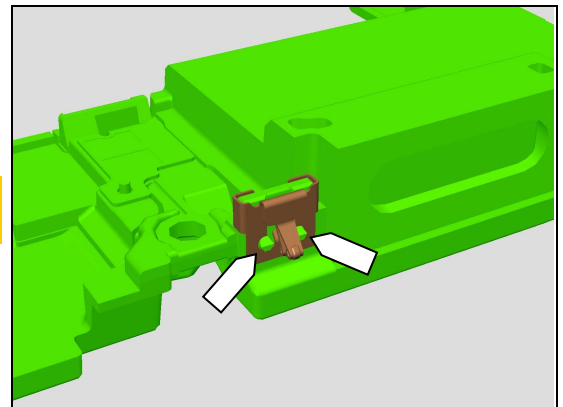
5.16 Main Antenna & Speaker Box Assy

5.16.1 Spring Antenna

Insert and snap the Spring Antenna on the Main Antenna & Speaker Box Assy with proper position as shown in picture.



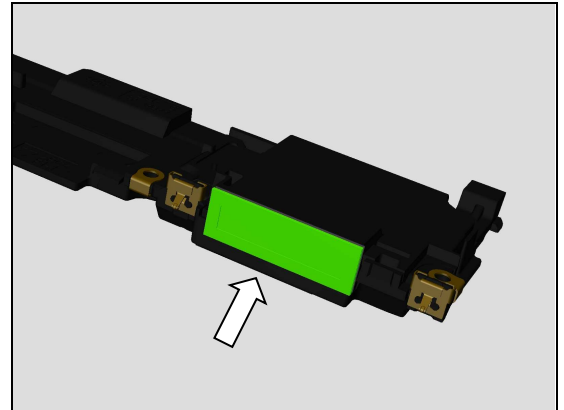
Make sure the Spring Antenna is properly snapped as shown in picture.



Reassembly

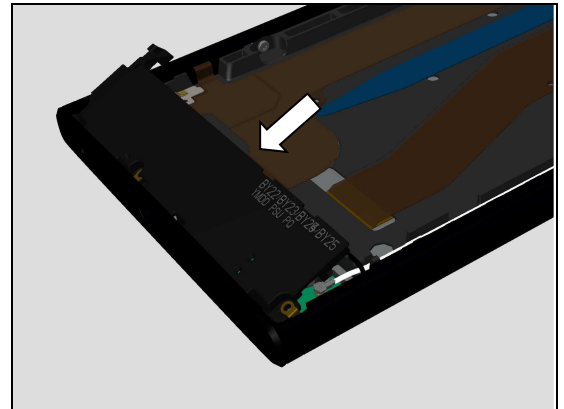
5.16.2 Speaker box Mesh

Attach a new Speaker box Mesh onto its proper position as shown in picture.

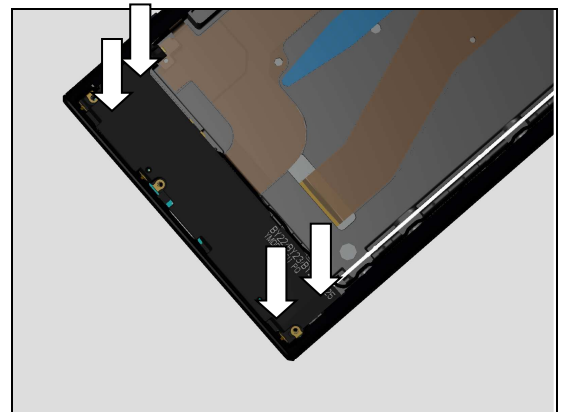


5.16.3 Main Antenna & Speaker Box Assy

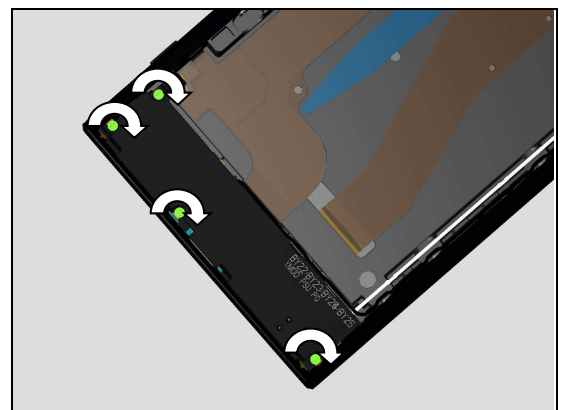
Firstly insert the bottom side of the Main Antenna Speaker Box as shown in picture.



Press around to snap the Speaker Box Assy



Apply 6Ncm torque when tightening the four Screw Cross with Bits JCIS No.0.



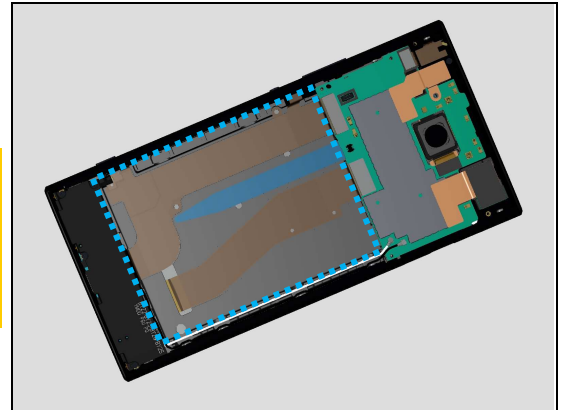
Reassembly

5.17 Adhesive Battery Right

Note!

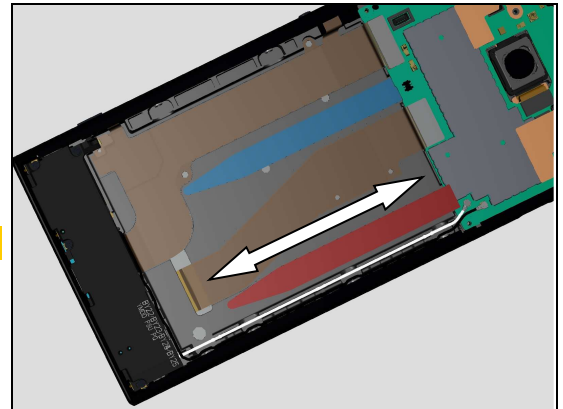
Clean the battery cavity by using with air blower or ionized air blower.

Make sure no foreign materials in the battery cavity of the unit.



Attach a new Adhesive Battery Right in alignment with the guiding lines on the Front Cover Assy as shown in picture.

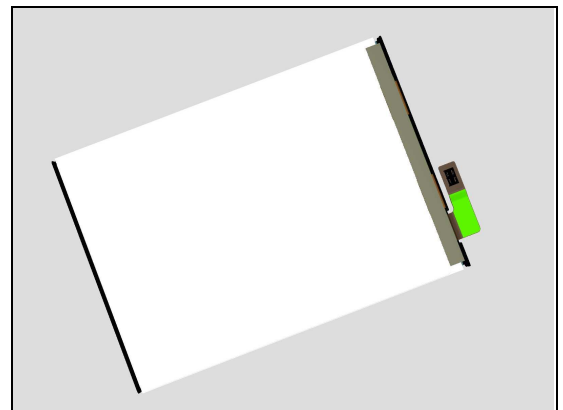
Do not attach the Adhesive Battery onto the FPC.



5.18 Battery

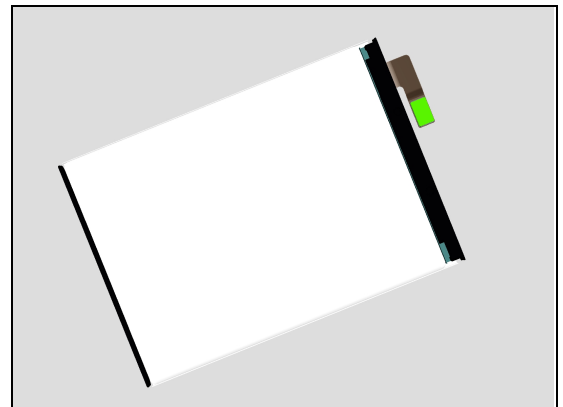
5.18.1 Mylar Battery FPC

Attach a new Mylar Battery FPC onto its proper position as shown in picture.



5.18.2 Sponge Battery BtB

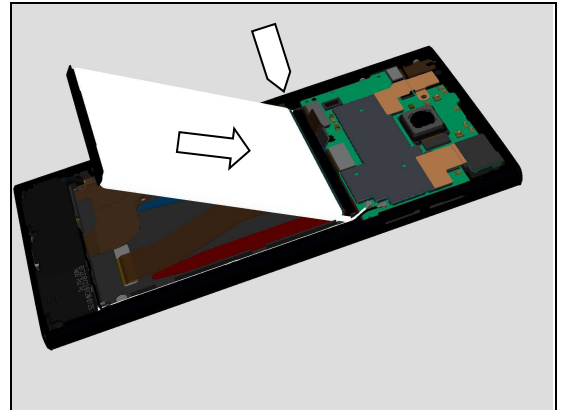
Attach a new Sponge Battery BtB onto its proper position as shown in picture.



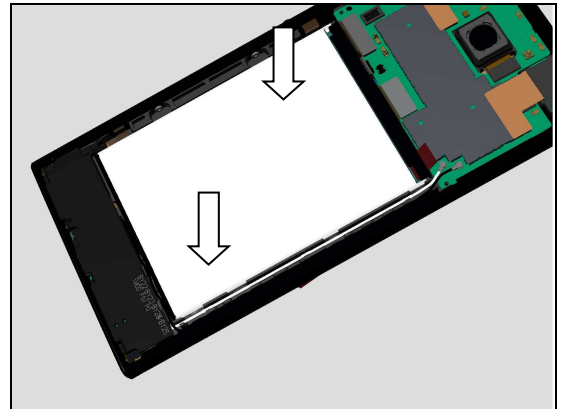
Reassembly

5.18.3 Battery

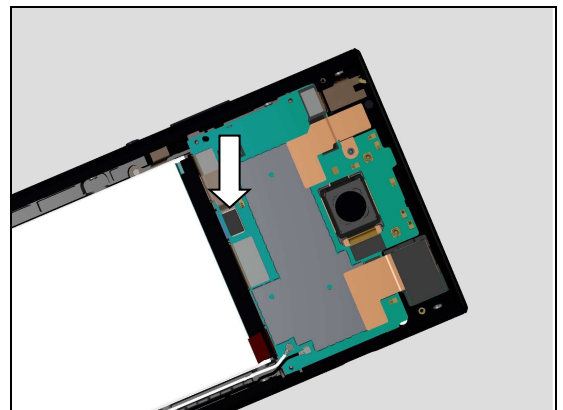
Firstly insert the Battery into its cavity in alignment with upper left corner as shown in picture.



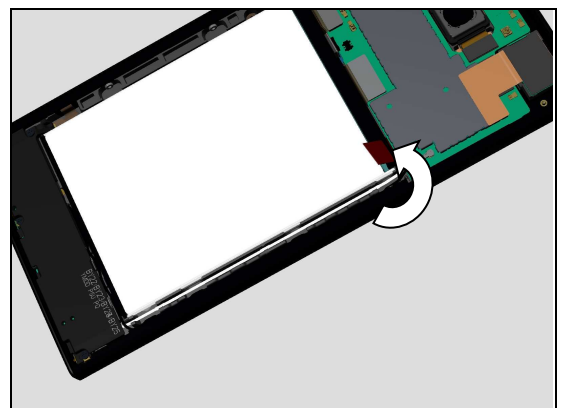
Press along gently to make the Battery attach securely.



Press to connect the Battery connector.



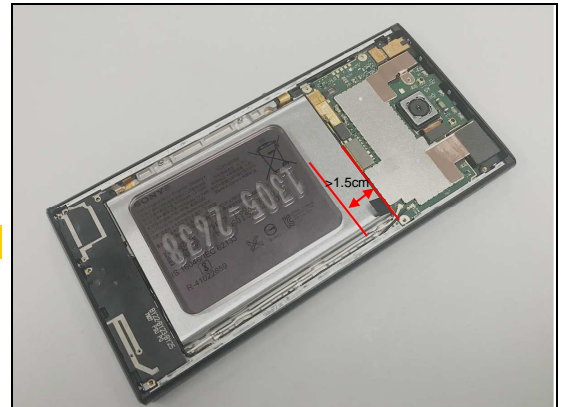
Attach the tab of the Adhesive Battery Right onto the Battery as shown in picture.



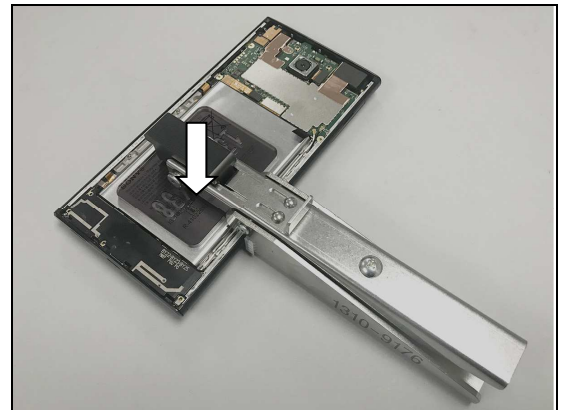
Reassembly

Place the Press Spacer onto the center area of the Battery as shown in picture.

Avoid the upper area of the battery!



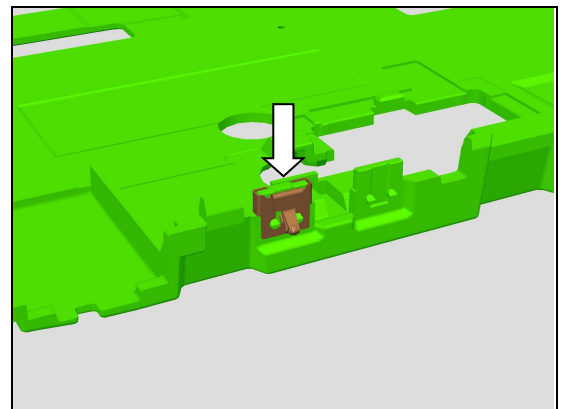
Press the Battery for 10 seconds by using Press Clamp as shown in picture.



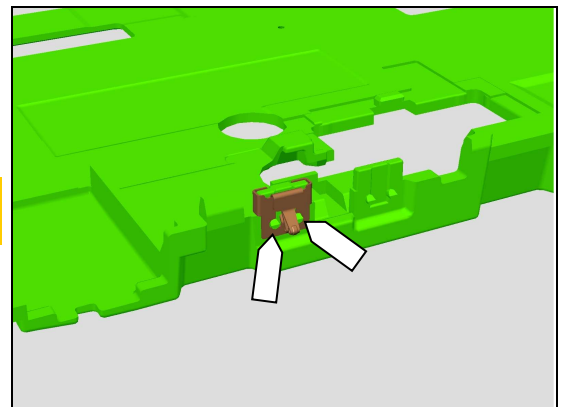
5.19 Antenna Box Assy BT/Wi-Fi

5.19.1 Spring Antenna

Insert to mount the Spring Antenna as shown in picture.

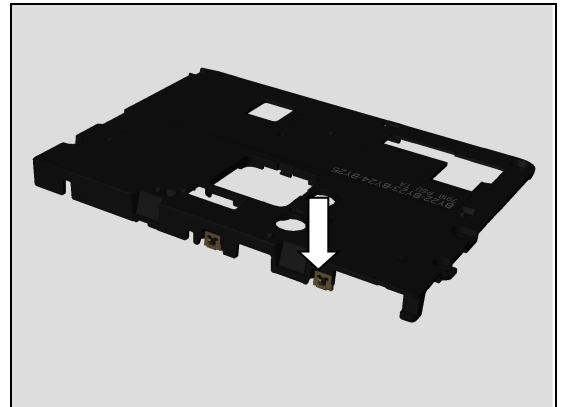


Make sure the Spring Antenna is properly snapped as shown in picture.



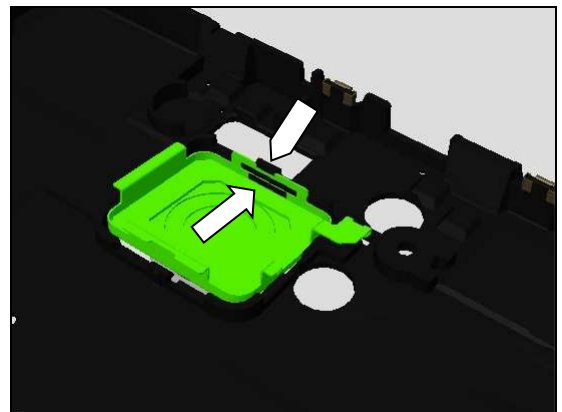
Reassembly

Do the same for the other Spring Antenna.

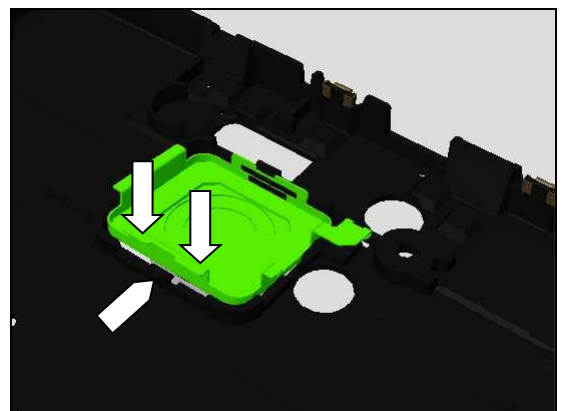


5.19.2 Main Camera Shielding

Insert to hook the Main Camera Shielding onto this small rib as shown in picture.

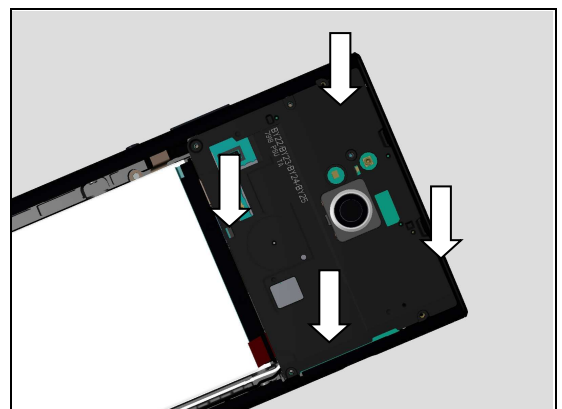


Press to snap the Main Camera Shielding onto the Antenna Box BT/Wi-Fi as shown in picture.



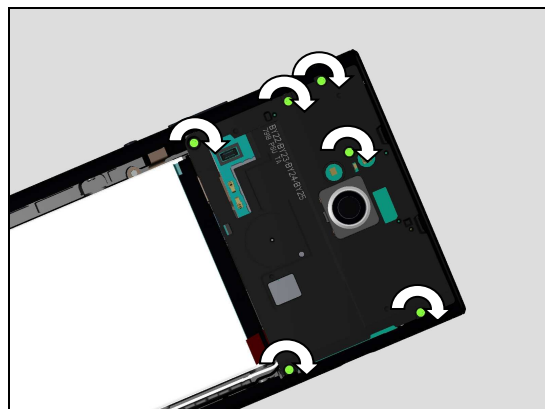
5.19.3 Antenna Box Assy BT/Wi-Fi

Place the Antenna Box Assy BT/Wi-Fi into its proper position as shown in picture and press to snap it.



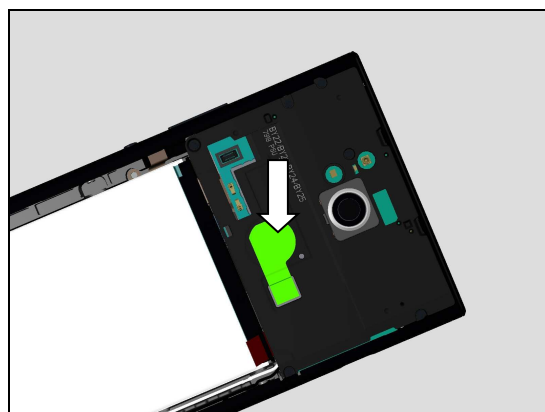
Reassembly

Apply 8Ncm torque when tightening the six Screw Cross with Bits JCIS No.0.



5.20 Conductive Tape Sub Antenna

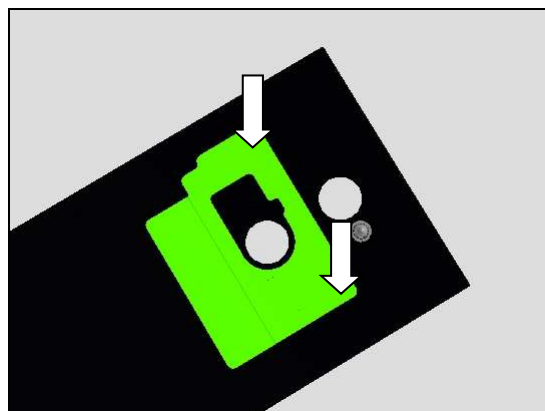
Attach a new Conductive Tape Sub Antenna onto its proper position as shown in picture.



5.21 FP Module Assy and Battery Cover Assy

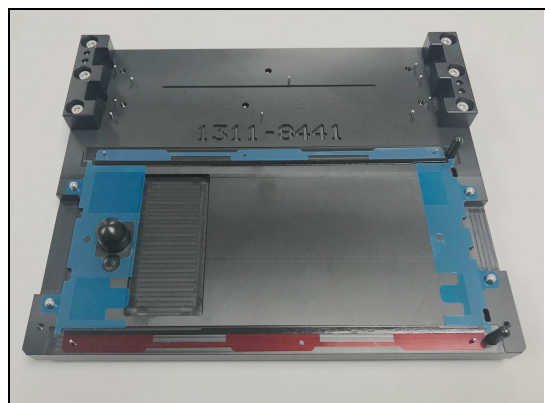
5.21.1 NFC Antenna Assy

Attach a new NFC Antenna Assy in alignment with the guiding line on the Battery Cover Assy and press it to secure attachment.



5.21.2 Adhesive Battery Cover Top, Adhesive Battery Cover Bottom, Adhesive Battery Cover Left and Adhesive Battery Cover Right

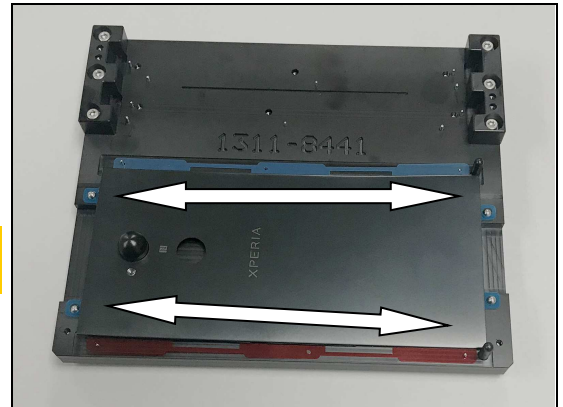
Place a new Adhesive Battery Cover Top, Adhesive Battery Cover Bottom, Adhesive Battery Cover Left and Adhesive Battery Cover Right onto the Panels Adhesive Fixture as shown in picture.



Reassembly

Place the Battery Cover Assy onto the Panels Adhesive Fixture using Camera Hole as guiding pole, then press the adhesive area to attach the adhesive.

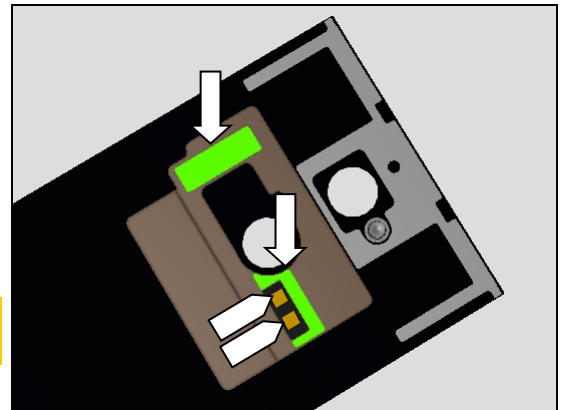
Make sure all remaining adhesive residue on the Battery Cover Assy have been removed before attaching!



5.21.3 Adhesive NFC_A and Adhesive NFC_B

Attach a new Adhesive NFC_A and Adhesive NFC_B in its proper position on the Copper Foil Battery Cover as shown in picture.

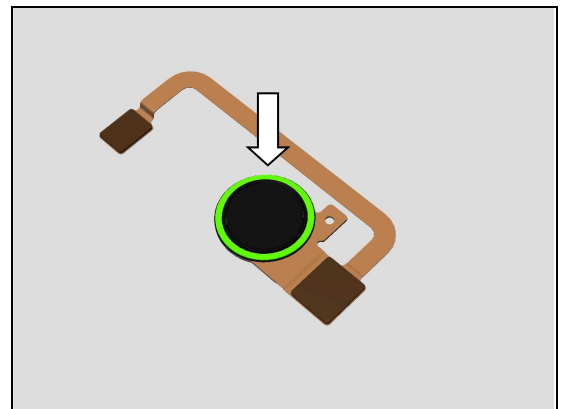
Be careful! Do not attach the Adhesive NFC_A onto the NFC antenna contact pads.



5.21.4 FP Module Assy

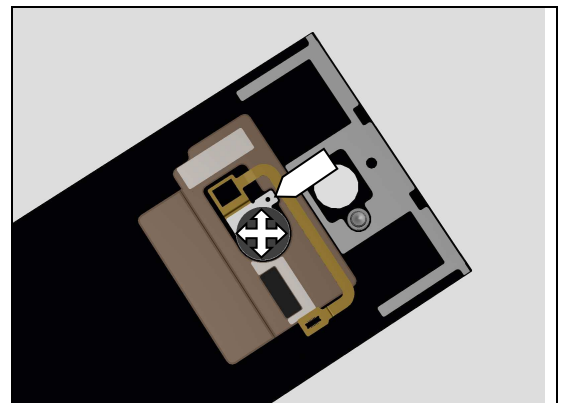
5.21.4.1 Adhesive FP Module

Attach a new Adhesive FP Module in its proper position as shown in picture.



5.21.4.2 FP Module Assy

Place the FP Module Assy into its hole and in alignment with the guiding pin as shown in picture.
And then press around to secure its attachment.

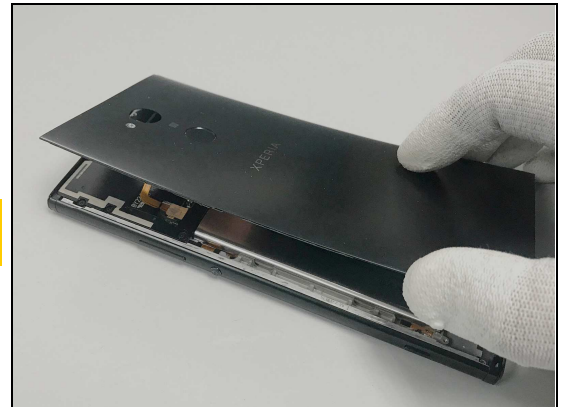


Reassembly

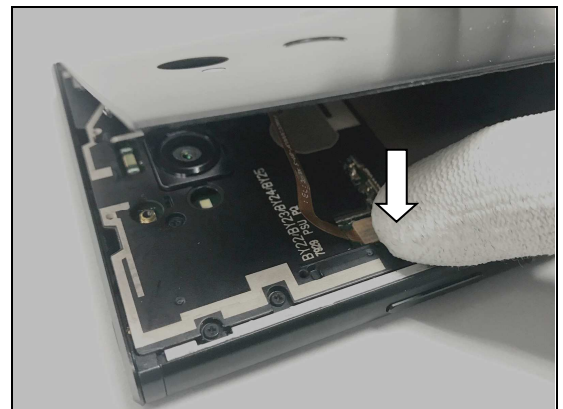
5.21.5 Battery Cover Assy

Make sure all remaining adhesive residue on the Front Cover Assy have been removed before assembly!

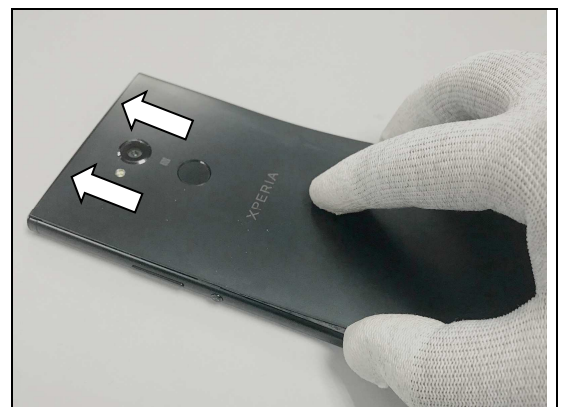
Place the Battery Cover Assy on the top side of the Unit.



Press to snap FP Module Assy BtB connector..



Place the Battery Cover Assy with alignment of the top side of the Unit.



Press to snap the hooks on top side.



Reassembly

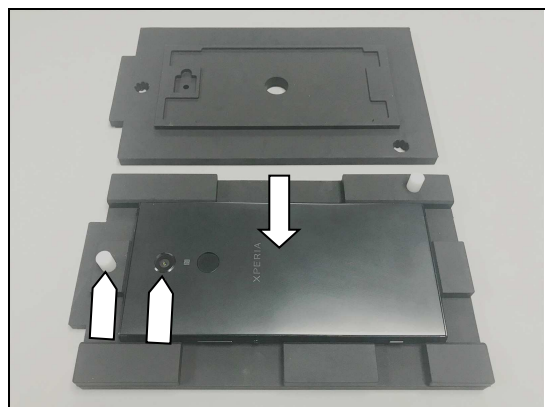
Press along the both side of the Battery Cover Assy to secure attachment.



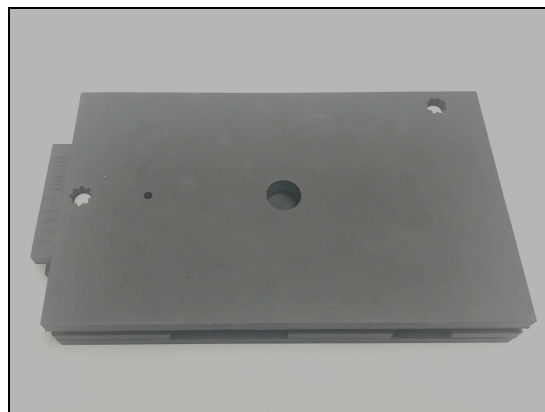
Press to snap the four hooks on bottom side.



Place the phone in its proper direction onto Press Rubber Inlay as shown in picture.



Close the Rubber Inlay with correct direction by using position pins and holes as shown.

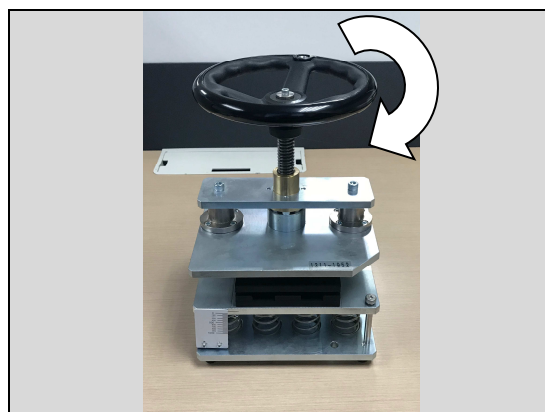


Reassembly

Insert the Press Rubber Inlay into the slot of the Generic Wheel Press Tool.



Turn the steering wheel of the Generic Wheel Press Tool to the pressure force 500N and press for 30 seconds.



Remove the Press Rubber Inlay.

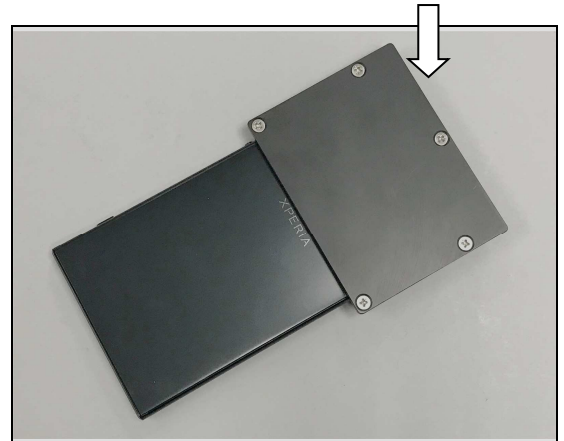


Prepare the Unit and the Press Pad NFC in place.

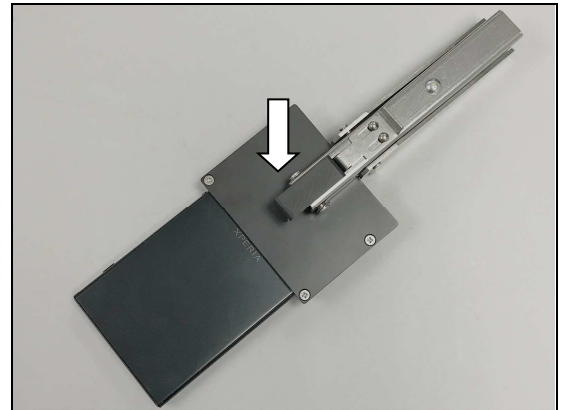


Reassembly

Put the Press Pad NFC on the Unit using 3 guiding poles as shown.



Prepare the Press clamp in place and press the area of the Adhesive NFC for 10 seconds.



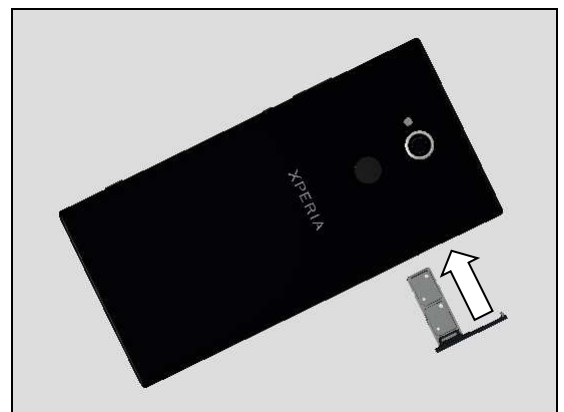
Note of how to use the Press Clamp:

- 1. Insert the phone to the bottom.**
- 2. The smaller press pad is used for pressing the area of the Adhesive NFC.**



5.22 Cap Tray

Place the Cap Tray in place.



Reassembly

Insert the Cap Tray and press to snap it.



6 Battery Reuse Instruction

**If you intend to reuse the Battery, carefully follow the Battery Reuse Instruction.
If it is failed, Don't reuse, and Scrap the Battery.**

6.1 Battery Handling Notices

1. Don't damage the battery foil with sharp objects.
2. Don't twist or deform the battery.
3. If the battery is dropped, don't reuse, and scrap.
4. Hold the battery at the frame edges of battery (green circled portion).



6.2 Dot Mark Check

Check if the Battery (which has been removed from the unit) has blue/red or black/red dots marking.

Do not reuse, if the Battery has two (2) red dots marking, and scrap it.

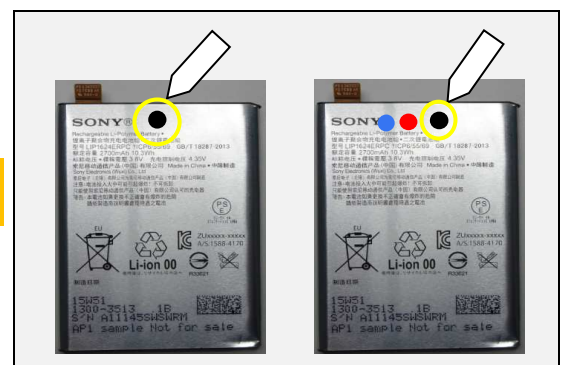
Blue and black **dot** indicates Battery **had been** removed from the unit, and red **dot** indicates Battery **had been** reinstalled (reused).

Scrap! If the battery has two (2) red dots marking, it can't be reused for third times.



6.3 Dot Marking 1

If no dot marking on the Battery, put black dot marking with permanent pen.



Battery Reuse Instruction

6.4 Appearance Check

Check if any damages on the battery such as Winkle, Bubble, Dent, Floating up the AL sheet, Twist, and/ or Line.

If it is out of below specification, do not reuse, and scrap the battery.

Item of Damage	Limit of size	Limit of quantity
Winkle	Length $\leq 5\text{mm}$	1 wrinkle per Al sheet
Mark	No mark is allowed.	
Bubble	Diameter $\leq \Phi 2\text{mm}$	3 bubble per Al sheet
Dent	Diameter $\leq \Phi 2\text{mm}$	3 dents per surface
Scratch	Scratch is allowed as far as printed characters are visible.	
Lift up Al Sheet	No lifting up of the Al sheet is allowed.	
Twist	Twist line is allowed.	
Line	No line is allowed.	

Definition of Damages and Sample Pictures

Wrinkle:

A slight line or fold on label or tape of the battery.



Mark:

Surface is bulged as lined by foreign material is located between Al sheet and battery cell housing.



Battery Reuse Instruction

Bubble:

Surface is bulged as pointed by foreign material is located between Al sheet and battery cell housing.



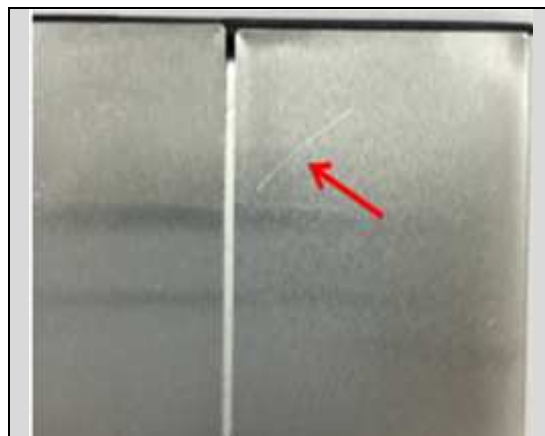
Dent:

It is caused that is stuck by sharp pointed objects.



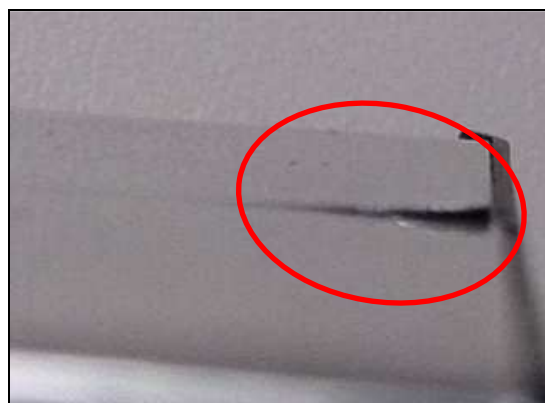
Scratch:

It is caused that scratched by sharp edge/pointed objects.



Lift up Al Sheet:

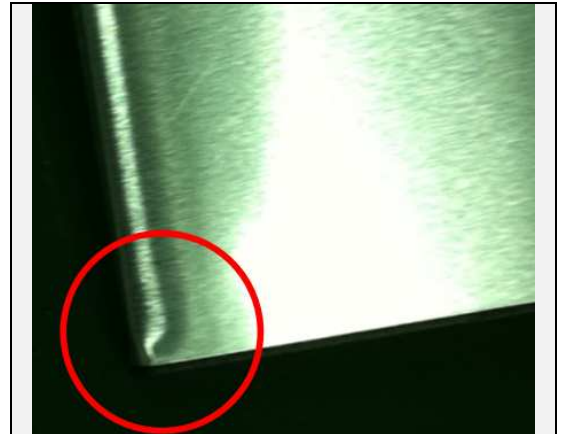
The edge of Al sheet is lifted caused by improper handling.



Battery Reuse Instruction

Twist:

Twisting line locates at the corner of battery pack that is created during Al sheet wrapping.



Line:

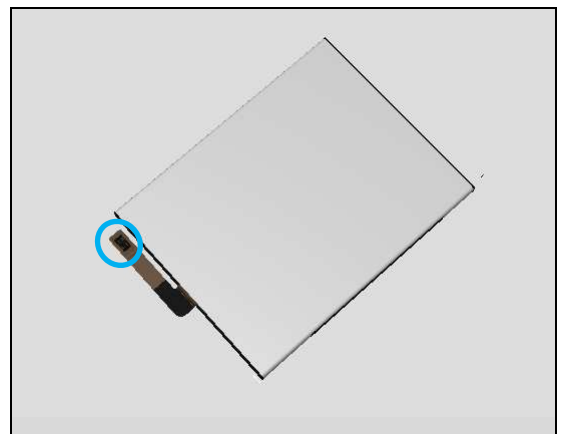
A slight line located at the border of battery cell and frame.



6.5 BtB Connector Check

Check if BtB connector has damages.

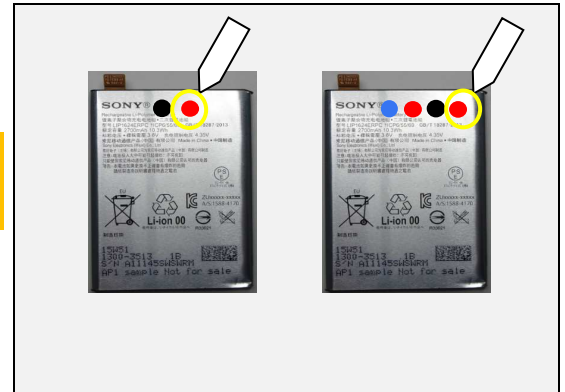
If any damages on the BtB connector, do not reuse, and scrap the battery.



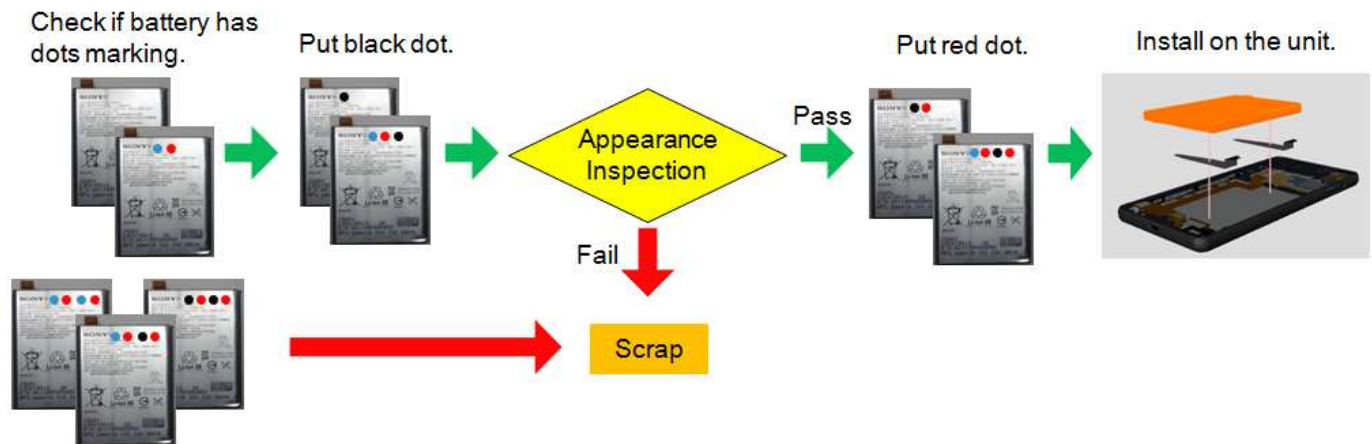
Battery Reuse Instruction

6.6 Dot Marking 2

If no failure has been detected by above appearance check, put the red dot marking on the Battery with permanent pen for reinstalling (reuse).



Overall procedure for Battery Reusing



7 Revision History

Rev.	Date	Changes / Comments
1	2018-Jan-12	Release
2	2018-Jan-18	Update Disassembly & Reassembly Procedure Special & Standard Tool Update the 5.18.3 about Press Spacer